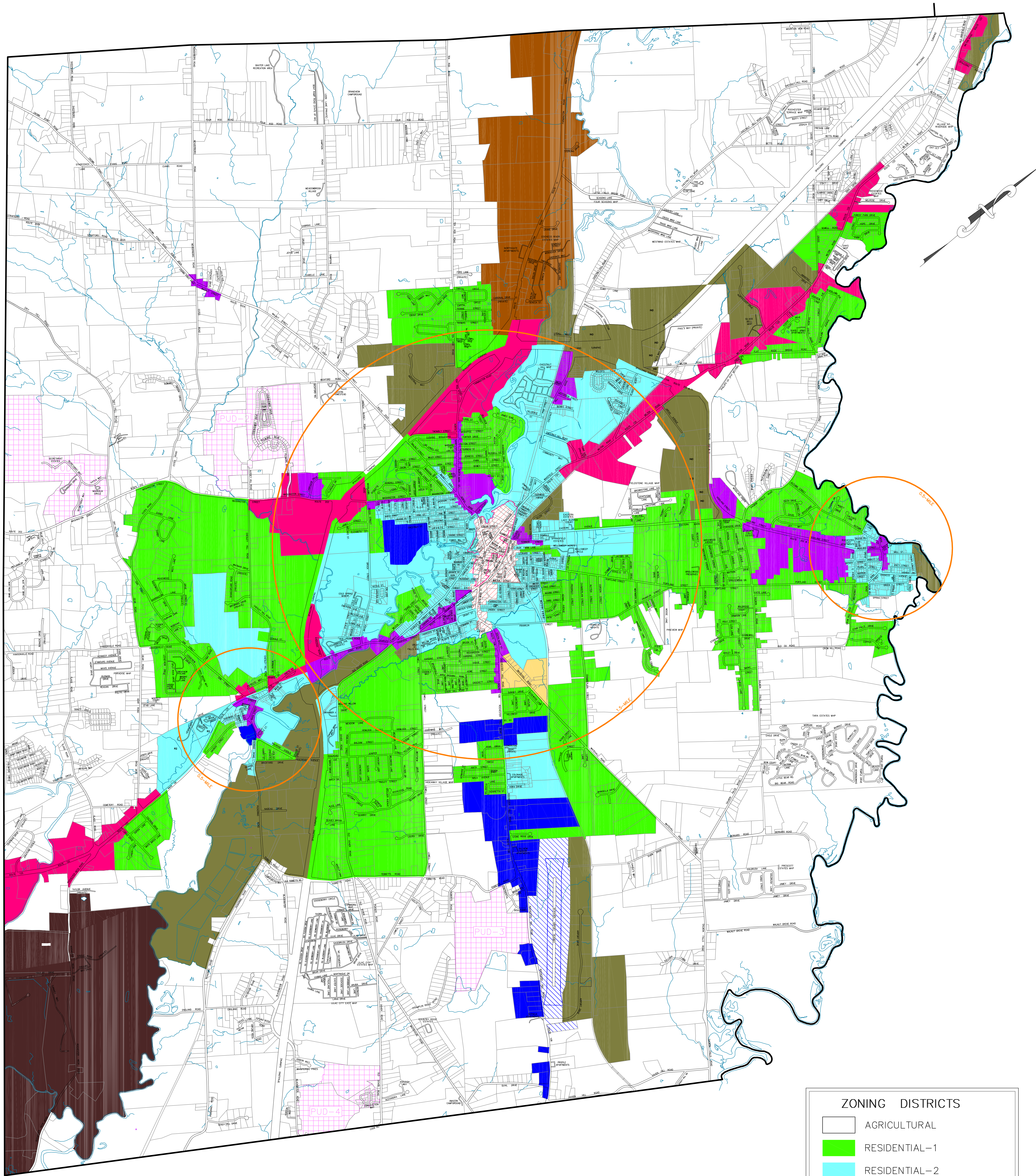


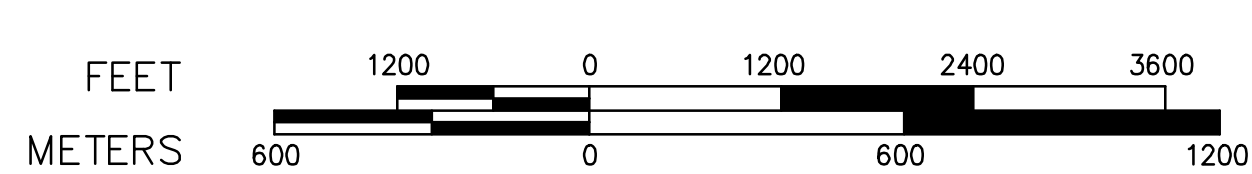
**AMENDMENT TO ORDINANCES**  
**REPEALING CHAPTER 42**  
**OF THE GENERAL ORDINANCES OF THE CITY OF ROCHESTER**  
**AND ADOPTING A NEW COMPREHENSIVE ZONING ORDINANCE,**  
**TO BE KNOWN AS CHAPTER 42 OF THE GENERAL ORDINANCES**  
**OF THE CITY OF ROCHESTER, IN ITS STEAD**

**Exhibit B**





# CITY OF ROCHESTER, N.H. ZONING MAP



PRODUCED IN 2012 BY  
**NORWAY PLAINS ASSOCIATES, INC.**  
2 CONTINENTAL BOULEVARD—P.O. BOX 249  
ROCHESTER, NH 03066-0249  
603-335-3948  
www.norwayplains.com

ADOPTED:

AMENDED: 7/12/2013; 10/7/2013

ZONING DISTRICTS	
	AGRICULTURAL
	RESIDENTIAL-1
	RESIDENTIAL-2
	DOWNTOWN COMMERCIAL
	OFFICE COMMERCIAL
	NEIGHBORHOOD MIXED USE
	HIGHWAY COMMERCIAL
	GRANITE RIDGE
	INDUSTRIAL
	RECYCLING INDUSTRIAL
	AIRPORT SPECIAL
	HOSPITAL SPECIAL
OVERLAY DISTRICTS	
	AQUIFER PROTECTION (STILL IN PROCESS)
	HISTORIC DISTRICT