

## CURRENT PROJECTS

### **38 Hanson Street**



38 Hanson Street development (<https://news.rochesternh.gov/38-hanson-street-demolished-to-make-way-for-new-mixed-use-building/>) ( April 2022)

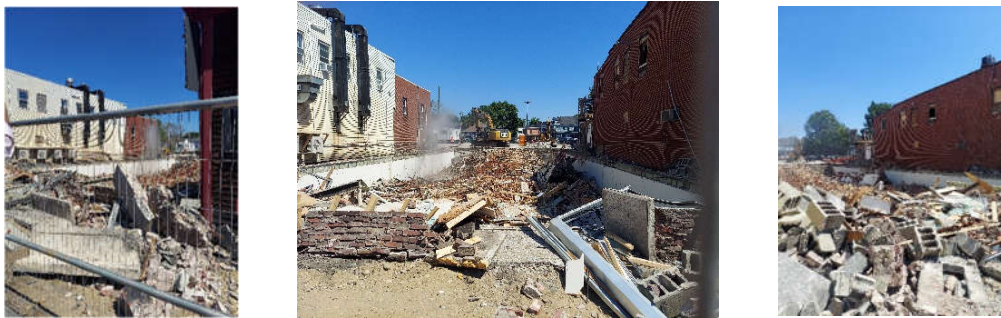
Mixed Use development planned for 38 Hanson Street (<https://www.fosters.com/story/news/local/2022/02/15/rochester-nh-hanson-street-mixed-use-development-parking/6786070001/>) (February 2022)

*Please note that some of the attached plans are preliminary designs and ideas that are not approved as a final product.*

## 45-55 North Main Street



**March 2023 construction progress**



**August 2022 demolition**



New development coming to former Hoffman building location (<https://news.rochesternh.gov/long-vacant-former-hoffman-building-demolished-for-new-development/>) (August 2022)

Hoffman building demolished. (<https://www.fosters.com/story/news/local/2022/08/03/hoffman-building-demolished-rochester-nh-apartments/10200358002/>) (August 2022)

City Council approves tax relief for 45-55 North Main Street (<https://news.rochesternh.gov/city-council-approves-tax-relief-for-45-55-north-main-street-development/>) (November 2021)

Conceptual Marketplace Design ([https://www.rochesternh.gov/sites/g/files/vyhlif9211/f/uploads/hoffman\\_building\\_-\\_conceptual\\_marketplace\\_080420.pdf](https://www.rochesternh.gov/sites/g/files/vyhlif9211/f/uploads/hoffman_building_-_conceptual_marketplace_080420.pdf))

*Please note that some of the attached plans are preliminary designs and ideas that are not approved as a final product.*

# Champlin Place

## Easter Seals - 215 Rochester Hills Road

Champlin Place sits on beautiful, wooded acreage in Rochester, New Hampshire and will be ready for occupancy in late summer of 2023. The property is designed to meet the needs of residents 62 years of age or older who want to live in an affordable, well-equipped, modern apartment in an independent living setting. Residents will benefit from easy access to a full array of Easter Seals NH's supportive services.

Easter Seals building affordable senior housing (<https://www.fosters.com/story/news/local/2022/12/13/champlin-place-affordable-senior-housing-being-built-in-rochester-nh/69714500007/>) (December 2022)



*Please note that some of the attached plans are preliminary designs and ideas that are not approved as a final product.*

# Gafney Home

## Community Action Partnership Strafford County - 90 Wakefield Street

Senior housing coming to Gafney Home (<https://news.rochesternh.gov/community-action-partnership-of-strafford-county-reutilizes-gafney-victorian-mansion-for-senior-living/>) (June 2022)

Gafney Home photo tour (<https://www.fosters.com/story/news/local/2022/06/22/gafney-home-rochester-nh-senior-housing/7669063001/>) (June 2022)



*Please note that some of the attached plans are preliminary designs and ideas that are not approved as a final product.*

# The Ridge Phase II



Located on Route 11/Farmington Road and just 1.5 miles off Exit 15/Spaulding Turnpike, THE RIDGE Marketplace draws from a trade area of more than 390,000 people within 25 miles.

Phase II Draft Proposal ([https://www.rochesternh.gov/sites/g/files/vyhli9211/f/uploads/phase\\_ii\\_draft\\_proposal.pdf](https://www.rochesternh.gov/sites/g/files/vyhli9211/f/uploads/phase_ii_draft_proposal.pdf))



*Please note that some of the attached plans are preliminary designs and ideas that are not approved as a final product.*



# Sig Sauer



SIG SAUER is an ISO 9001 certified company with over 1,200 employees with headquarters in Newington, NH. It is the largest member of a worldwide business group of firearms manufacturers that includes J.P. Sauer & Sohn and Blaser, GmbH. in Germany. This global network of companies gives SIG SAUER a world-class firearms knowledge base, unparalleled design expertise, and extensive manufacturing capacity, enabling the company to respond quickly and effectively to changing market conditions and the needs of its military, law enforcement, and commercial markets worldwide.



City officials tour Sig Sauer facility (<https://news.rochesternh.gov/city-officials-tour-new-sig-sauer-facility-on-milton-road/>) (July 2022)

Sig Sauer secures \$4.5B Army contract (<https://www.fosters.com/story/news/2022/04/28/sig-sauer-rochester-nh-getting-ready-4-5-billion-army-contract/7438931001/>) (4/2022)

SIG Sauer Expands to Rochester (<https://news.rochesternh.gov/sig-sauer-announces-expansion-of-nh-operations-to-rochester/>) (October 2020)

*Please note that some of the attached plans are preliminary designs and ideas that are not approved as a final product.*

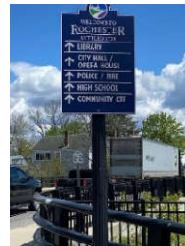
# Wayfinding



The wayfinding master plan for the City of Rochester serves to create a public signage program that establishes a consistent design style for Rochester's informational and wayfinding signage throughout the City including selected "gateways." A unified signage program provides a more easily recognizable wayfinding system and a way of directing and informing visitors to key destinations and is also a "branding" or image tool that is beneficial to marketing the City and its resources.

## Wayfinding Signage – Master Plan

([https://www.rochesternh.gov/sites/g/files/vyhli9211/f/uploads/rochester\\_wayfinding\\_masterplandraft\\_2018\\_05\\_08.pdf](https://www.rochesternh.gov/sites/g/files/vyhli9211/f/uploads/rochester_wayfinding_masterplandraft_2018_05_08.pdf)) (May 2018)



*Please note that some of the attached plans are preliminary designs and ideas that are not approved as a final product.*