

PROPOSED ATHLETIC FIELDS

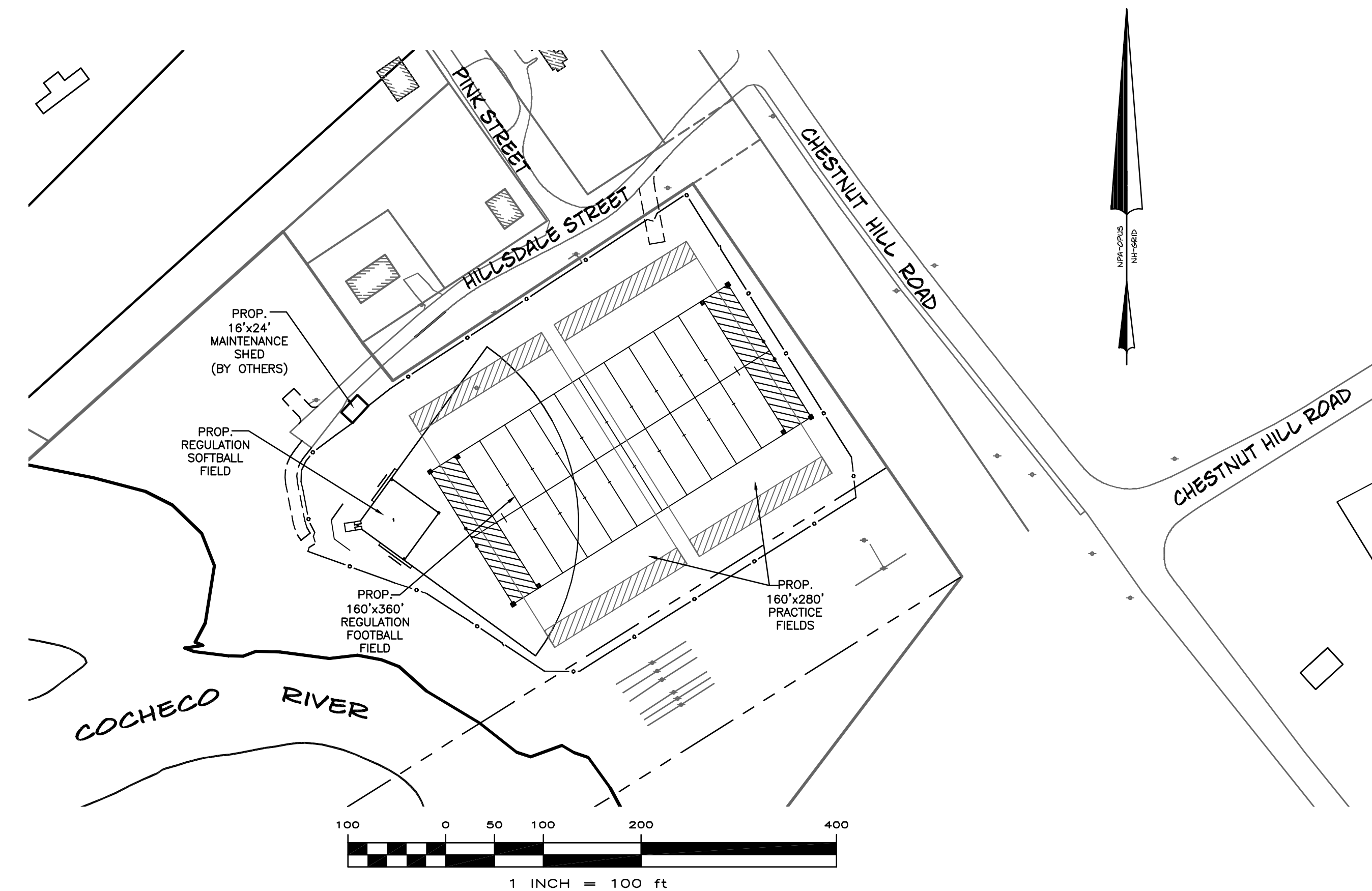
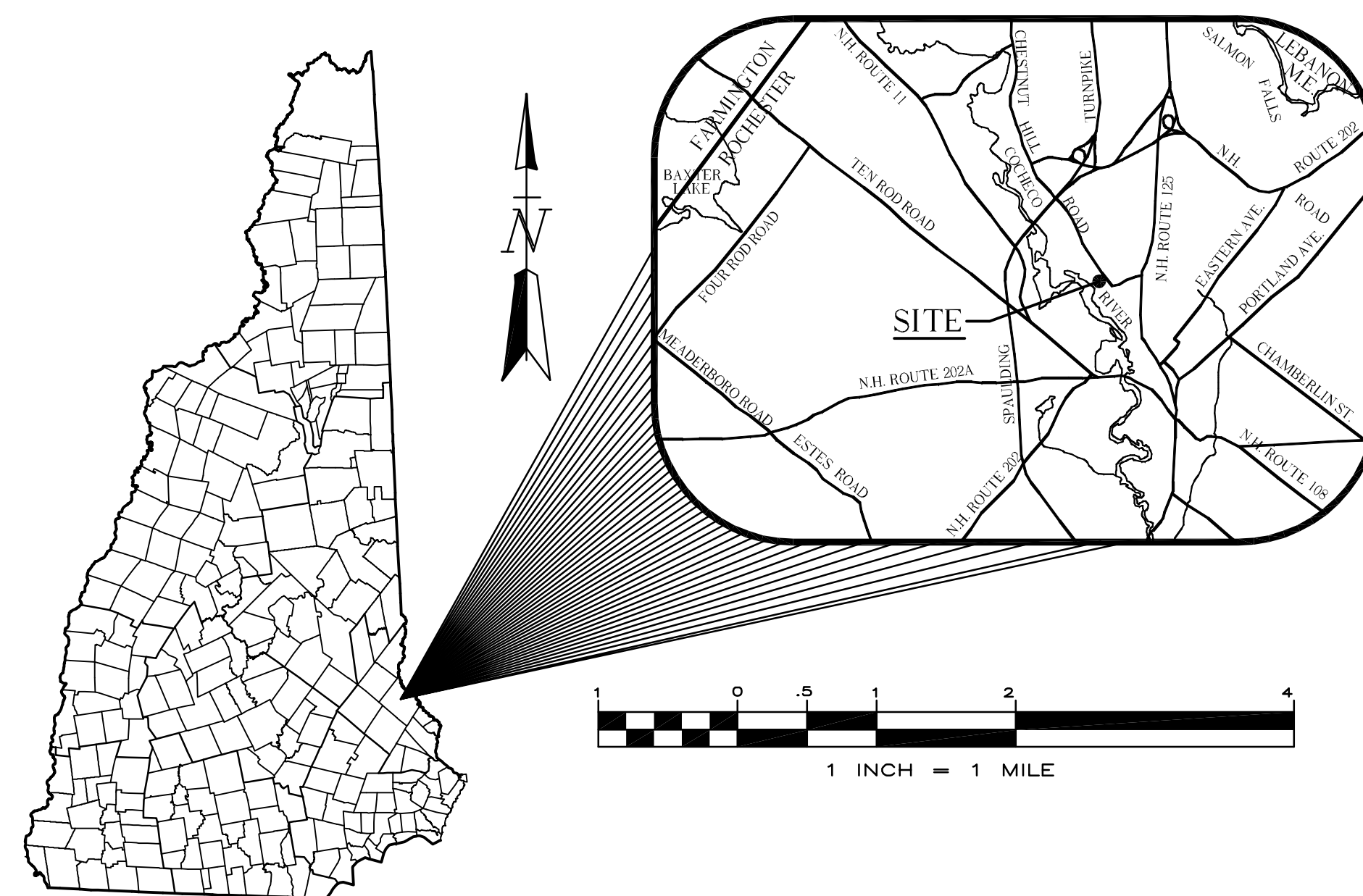
FOR

CITY OF ROCHESTER SCHOOL DEPARTMENT

HILLSDALE STREET

ROCHESTER, NH 03867

(BID SET - APRIL 9, 2010)



CIVIL ENGINEERS

NORWAY PLAINS ASSOCIATES, INC.
2 CONTINENTAL BOULEVARD
ROCHESTER, NEW HAMPSHIRE 03867
(603) 335-3948

SHEET INDEX

E-1	EXISTING FEATURES PLAN	1" = 30'
C-1	PROPOSED OVERALL ATHLETIC FIELDS	1" = 50'
C-2	PROPOSED ATHLETIC FIELDS	1" = 30'
C-3	GRADING & EROSION AND SEDIMENTATION CONTROL PLAN	1" = 30'
C-4	CONSTRUCTION DETAILS	AS SHOWN
C-5	EROSION AND SEDIMENTATION CONTROL DETAILS	AS SHOWN

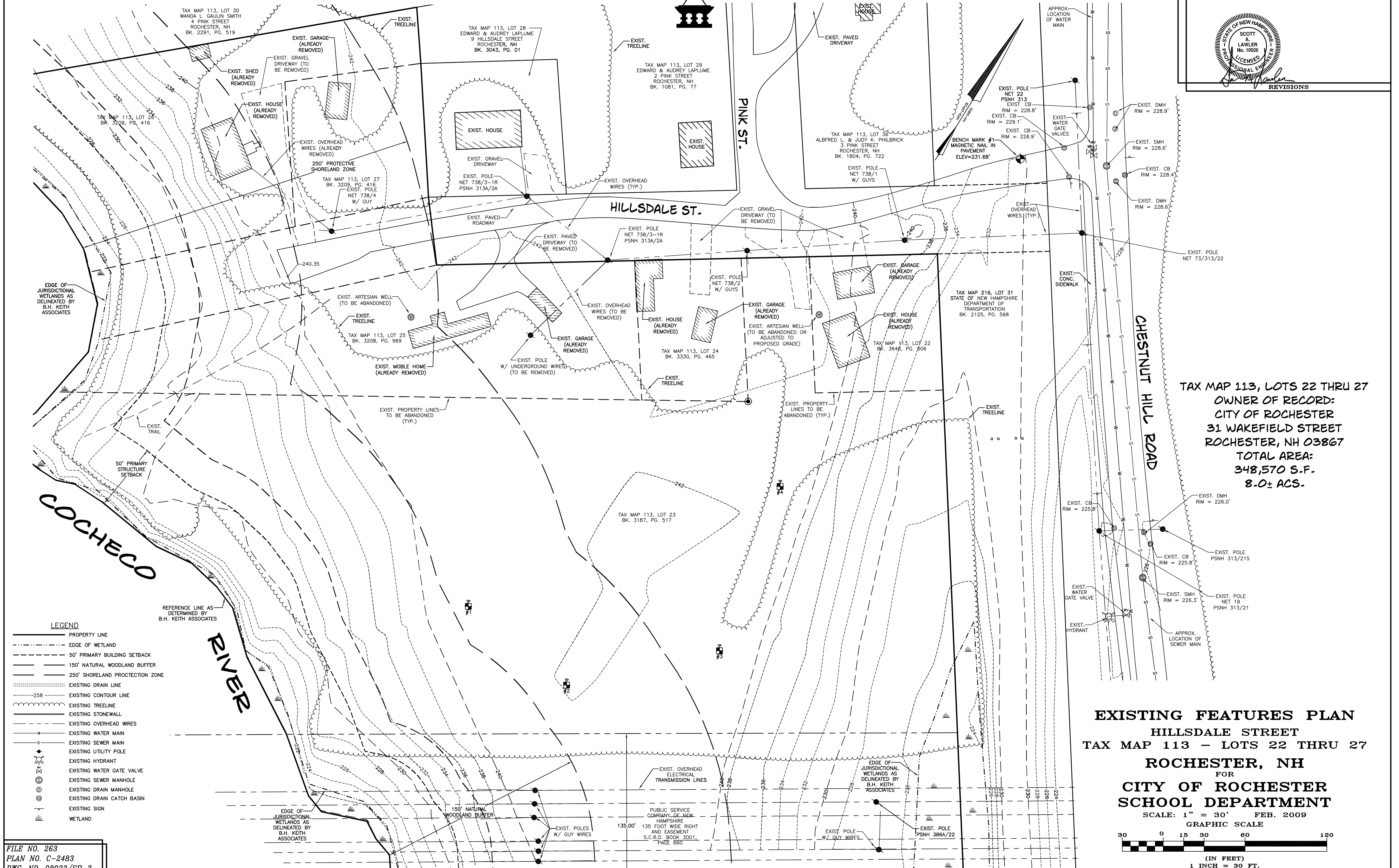
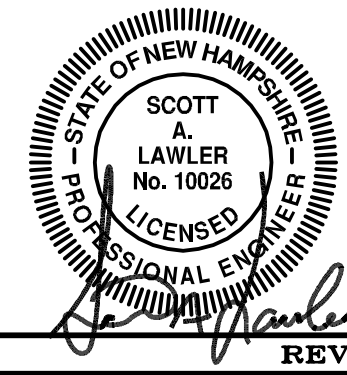
PROPERTY OWNER

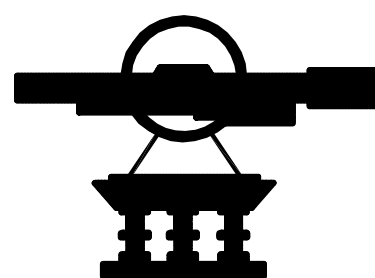
CITY OF ROCHESTER
31 WAKEFIELD STREET
ROCHESTER, NH 03867

BID SET NO. _____

FILE NO. 263
PLAN NO. C-2483
DWG. NO. 08023/SP-2
F.B. NO.

NORWAY PLAINS ASSOCIATES, INC.



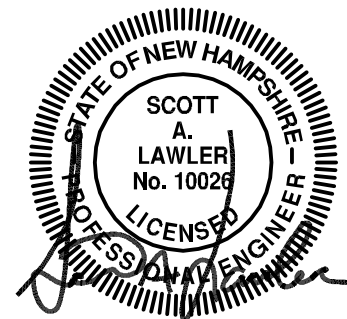


LEGEND

- BEARING
DISTANCE
PROPERTY LINE
EDGE OF WETLAND
50' PRIMARY BUILDING SETBACK
150' NATURAL WOODLAND BUFFER
250' SHORELAND PROTECTION ZONE
EXISTING TREELINE
EXISTING STONEWALL
EXISTING UTILITY POLE
WETLAND
PROPOSED TREELINE
PROPOSED GRAVEL ACCESS DRIVEWAY
PROPOSED CHAINLINK FENCE
SITE PHOTO LOCATIONS

SITE REVIEW APPROVAL

WHETHER OR NOT OTHERWISE EXPRESSLY RECITED ON THIS SITE REVIEW PLAN, THE SITE REVIEW APPROVAL GRANTED IS CONDITIONED ON FAITHFUL AND DILIGENT ADHERENCE BY THE OWNER/DEVELOPER TO ALL WRITTEN AND VERBAL REPRESENTATIONS MADE REGARDING SUCH MATTERS AS USE, NUMBER OF EMPLOYEES, DRAINAGE, CONSTRUCTION, ETC. AS WELL AS ALL OTHER TERMS, CONDITIONS, PROVISIONS, REQUIREMENTS AND SPECIFICATIONS OF THE SITE PLAN REVIEW REGULATIONS OF THE CITY OF ROCHESTER, N.H., AS AMENDED, IN EFFECT ON THE DATE OF APPROVAL. ANY VARIATION FROM THE PROPOSAL AS APPROVED MAY ALSO REQUIRE THE SUBMISSION AND APPROVAL OF A NEW SITE REVIEW APPLICATION.



REVISIONS

03/15/10 - REVISE CHAIN LINK FENCE LOCATION AND GATES OPENINGS. NOTE PROPOSED SHED BY OTHERS.

GENERAL SITE PLAN NOTES:

- THIS PARCEL IS LOCATED IN AGRICULTURAL (A) ZONE AND CONSERVATION OVERLAY DISTRICT (COD).
 - THE PURPOSE OF THIS PLAN IS TO DEPICT THE REMOVAL OF OLD BUILDING AND THE CONSTRUCTION OF PROPOSED ATHLETIC FIELDS AND A 384 SQUARE FOOT MAINTENANCE SHED.
 - ALL EXISTING UTILITIES LOCATIONS ARE APPROXIMATE AS SHOWN. THE CONTRACTOR SHALL VERIFY THEIR EXACT LOCATION PRIOR TO ANY WORK BEING PERFORMED.
 - THESE PLANS SHOW ONLY THOSE FEATURES THAT WERE VISUALLY APPARENT ON THE DATE OF SURVEY. THE ABSENCE OF SUBSURFACE STRUCTURES, UTILITIES, ETC. FROM THESE PLANS, BUT IN EXISTENCE, IS NOT INTENDED OR IMPLIED.
 - DIMENSIONAL REGULATIONS PER ZONING ORDINANCE:
AGRICULTURAL (A) ZONE (WITHOUT SEWER OR WATER):
MINIMUM LOT SIZE = 40,000 SQUARE FEET
MINIMUM LOT FRONTAGE = 150 FEET
MINIMUM YARD SETBACK:
FRONT = 35 FEET
SIDE = 25 FEET
REAR = 50 FEET
MAXIMUM LOT COVERAGE = 30%
 - ORIENTATION: HORIZONTAL AND VERTICAL DATUMS - CITY OF ROCHESTER GIS.
 - SOIL TYPES ARE PER STRAFFORD COUNTY SOIL SURVEY, SHEET 15.
Hsb - HINCKLEY LOAMY SAND; 3 TO 8% SLOPES
Mh - MUCK AND PEAT
Wda - WINDSOR LOAMY SAND; 0 TO 3% SLOPES
 - PARCEL IS LOCATED WITHIN ZONE A (100YR FLOOD) AS SHOWN ON FEDERAL EMERGENCY MANAGEMENT AGENCY MAP, COMMUNITY #3301750203D.
 - FOR MORE INFORMATION ABOUT THIS SITE, PLAN, CONTACT THE CITY OF ROCHESTER PLANNING DEPARTMENT, 31 WAKEFIELD ST., ROCHESTER, NH 03867, (603) 335-1338.
 - PARCEL IS SUBJECT TO 135' WIDE RIGHT OF WAY AND UTILITY EASEMENT AS OUTLINED IN DEED TO PUBLIC SERVICE COMPANY OF NEW HAMPSHIRE, SEE BOOK 3001, PAGE 660.
 - ALL CONSTRUCTION ACTIVITY RELATED TO THE DEVELOPMENT OF THIS SITE IS RESTRICTED TO THE HOURS OF 7:00 A.M. TO 6:00 P.M., MONDAY THROUGH FRIDAY AND 8:00 A.M. TO 6:00 P.M. ON SATURDAY.
 - LOAM STOCKPILES SHALL BE SEEDED IN ACCORDANCE WITH THE SEEDING NOTES ON SHEET C-6, IF STORED MORE THAN 30 DAYS. SILT FENCE SHALL BE INSTALLED AT THE DOWN GRADIENT SIDE OF THE LOAM STOCKPILE AS SHOWN IN THE PLAN VIEW AROUND AT LEAST ONE HALF THE CIRCUMFERENCE OF THE PILE.
 - DURING ALL PHASES OF CONSTRUCTION DUST SHALL BE PREVENTED FROM BECOMING A SAFETY OR HEALTH HAZARD BY THE IMPLEMENTATION OF ACCEPTED CONTROL METHODS SUCH AS WATERING.
 - THE CITY RESERVES THE RIGHT TO REQUIRE ADDITIONAL EROSION CONTROL MEASURES IF ANY OFF-SITE IMPACTS ARE FOUND DURING CONSTRUCTION.
 - STATE OF NEW HAMPSHIRE PERMIT NUMBERS:
NPDES - ALTERATION OF TERRAIN PERMIT: PENDING
NHDES - SHORELAND PROTECTION PERMIT: PENDING
 - NATIONAL POLLUTANT DISCHARGE ELIMINATION SYSTEM (NPDES):
NPDES PERMITS ARE ONLY REQUIRED FOR PROJECTS MEETING THE DISTURBED AREA CRITERIA BELOW AND HAVING A POINT SOURCE STORMWATER DISCHARGE FROM THE SITE TO AN ADJACENT WETLAND OR WATER BODY (I.E. CULVERT, SWALE, ETC. OUTLETING TO A WETLAND, CREEK, STREAM OR RIVER).
- NPDES PERMIT: REQUIRED
- NPDES PERMITS CONSIST OF A NOTICE OF INTENT (NOI) FILED WITH THE ENVIRONMENTAL PROTECTION AGENCY AT LEAST 48 HOURS PRIOR TO CONSTRUCTION COMMENCING AND A STORMWATER POLLUTION PREVENTION PLAN (SWPPP) BEING PREPARED, KEPT ON SITE AND FOLLOWED BY THE CONTRACTOR. FOR STATUS OF THIS PERMIT CONTACT THE PROJECT GENERAL CONTRACTOR.
- ACCESS INTO THE SITE FOR FIRE APPARATUS MUST BE MAINTAINED AT ALL TIMES DURING THE CONSTRUCTION PROCESS. THIS IS THE SOLE RESPONSIBILITY OF THE APPLICANT/DEVELOPER TO MAINTAIN THIS ACCESS. PLEASE CONTACT THE FIRE DEPARTMENT AT 330-7182 WITH ANY QUESTIONS ABOUT THE ACCESS REQUIREMENTS.

TAX MAP 113, LOTS 22 THRU 27
OWNER OF RECORD:
CITY OF ROCHESTER
31 WAKEFIELD STREET
ROCHESTER, NH 03867
TOTAL AREA:
348,570 S.F.
8.0± ACS.

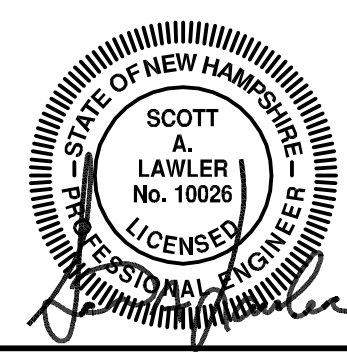
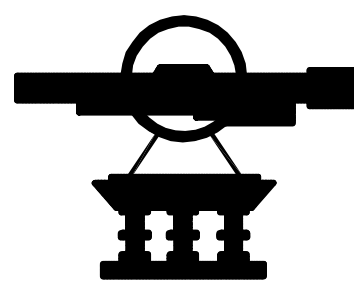
OVERALL
PROPOSED ATHLETIC FIELDS
HILLSDALE STREET
TAX MAP 113 - LOTS 22 THRU 27
ROCHESTER, NH
FOR
CITY OF ROCHESTER
SCHOOL DEPARTMENT

SCALE: 1" = 50' FEB. 2009

GRAPHIC SCALE



(IN FEET)
1 INCH = 50 FT.
REVISION DATE

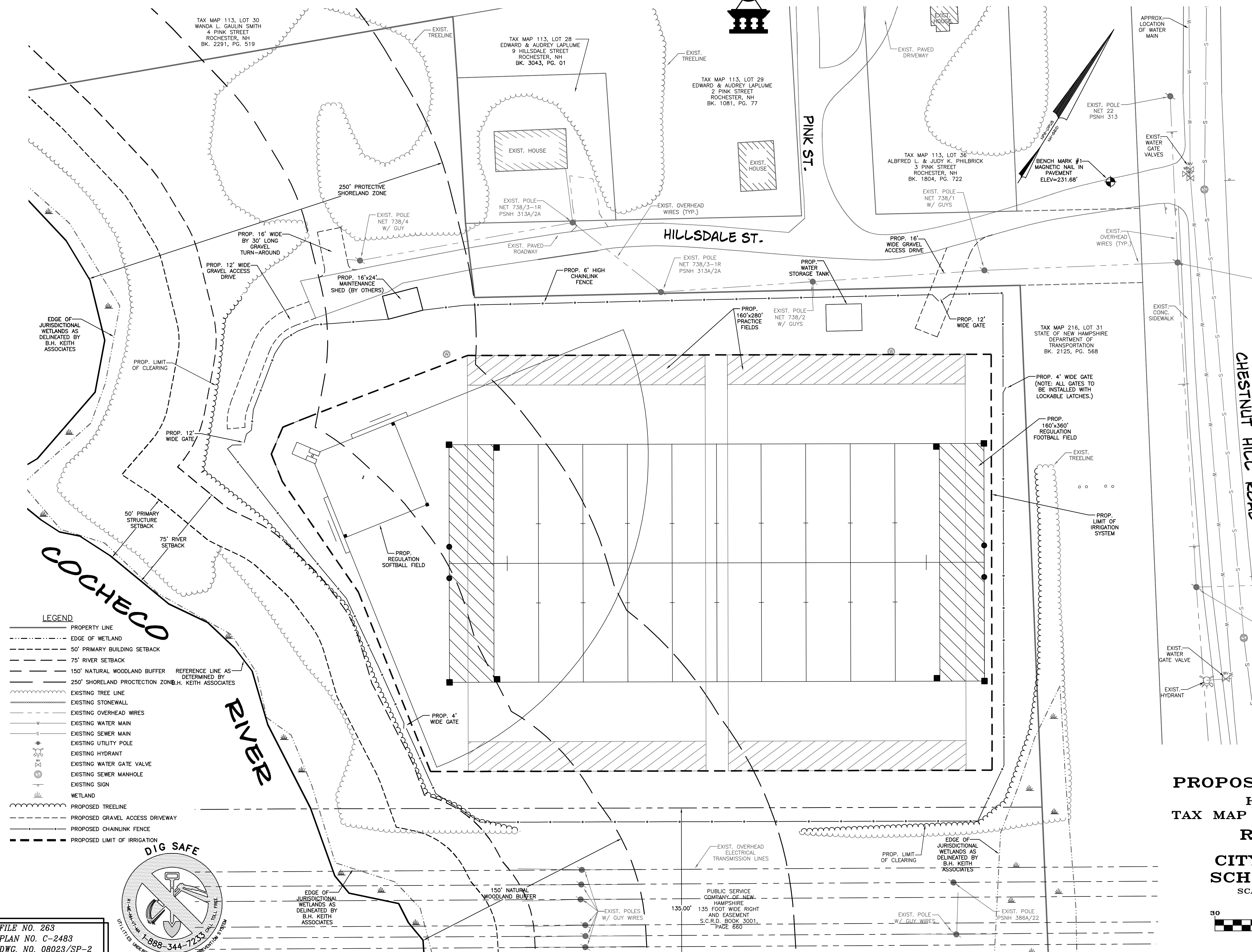


REVISIONS

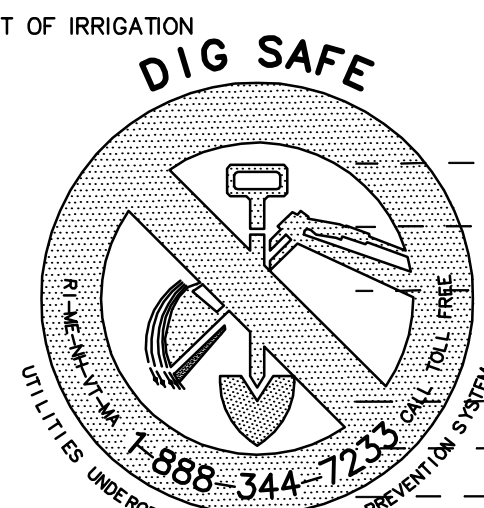
03/15/10 - REVISE CHAIN LINK FENCE LOCATION AND GATES OPENINGS. ADD ADDITIONAL FENCE GATES, IRRIGATION SYSTEM REQUIREMENTS, LIMITS OF IRRIGATION AND PROPOSED WATER STORAGE TANK LOCATION. NOTE PROPOSED SHED BY OTHERS AND SHOW EXISTING WELLS ON PLAN.

IRRIGATION SYSTEM REQUIREMENTS:

1. ADJUST THE EXISTING WELL (CASING, POWER SUPPLY, CONTROLS, ETC.) AS NECESSARY. ASSUME THE EXISTING WELL PUMP IS ADEQUATE.
2. PROVIDE UNDERGROUND WATER STORAGE FOR A MINIMUM OF 12,000 GALLONS, WITH A 65 GPM, MINIMUM, PUMP AND CONTROLS.
3. INSTALL A COMPLETE, AUTOMATICALLY CONTROLLED, UNDERGROUND IRRIGATION SYSTEM FOR THE AREA OUTLINED ON THIS SHEET.



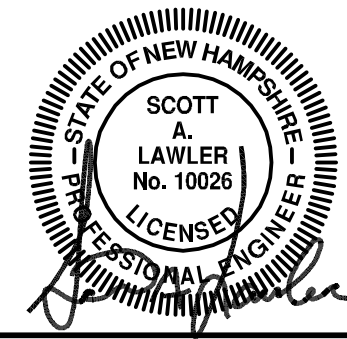
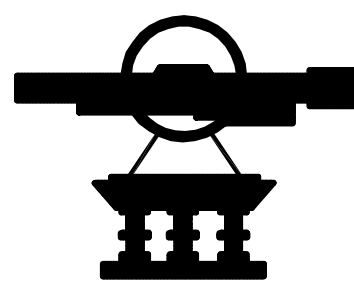
- LEGEND**
- PROPERTY LINE
 - EDGE OF WETLAND
 - 50' PRIMARY BUILDING SETBACK
 - 75' RIVER SETBACK
 - 150' NATURAL WOODLAND BUFFER
 - 250' SHORELAND PROTECTION ZONE
 - EXISTING TREE LINE
 - EXISTING STONEWALL
 - EXISTING OVERHEAD WIRES
 - EXISTING WATER MAIN
 - EXISTING SEWER MAIN
 - EXISTING UTILITY POLE
 - EXISTING HYDRANT
 - EXISTING WATER GATE VALVE
 - EXISTING SEWER MANHOLE
 - EXISTING SIGN
 - WETLAND
 - PROPOSED TREELINE
 - PROPOSED GRAVEL ACCESS DRIVEWAY
 - PROPOSED CHAINLINK FENCE
 - PROPOSED LIMIT OF IRRIGATION



FILE NO. 263
PLAN NO. C-2483
DWG. NO. 08023/SP-2
F.B. NO.

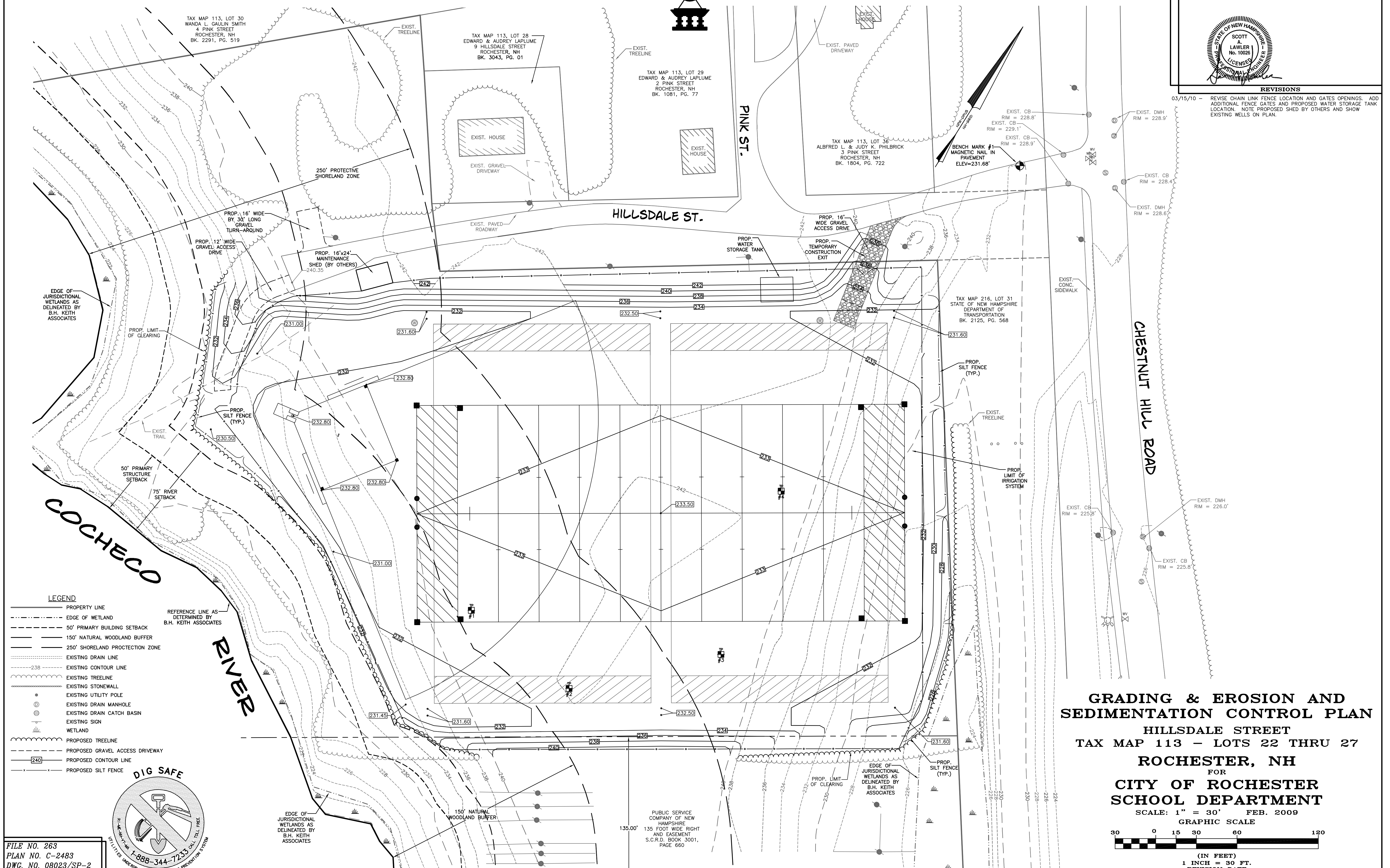
PROPOSED ATHLETIC FIELDS
HILLSDALE STREET
TAX MAP 113 - LOTS 22 THRU 27
ROCHESTER, NH

FOR
CITY OF ROCHESTER
SCHOOL DEPARTMENT
SCALE: 1" = 30' FEB. 2009
GRAPHIC SCALE
30 0 15 30 60 120
(IN FEET)
1 INCH = 30 FT.
REVISION DATE



REVISIONS

03/15/10 - REVISE CHAIN LINK FENCE LOCATION AND GATES OPENINGS. ADD ADDITIONAL FENCE GATES AND PROPOSED WATER STORAGE TANK LOCATION. NOTE PROPOSED SHED BY OTHERS AND SHOW EXISTING WELLS ON PLAN.



LEGEND

- PROPERTY LINE
- - - - - EDGE OF WETLAND
- - - - - 50' PRIMARY BUILDING SETBACK
- - - - - 150' NATURAL WOODLAND BUFFER
- - - - - 250' SHORELAND PROTECTION ZONE
- - - - - EXISTING DRAIN LINE
- - - - - EXISTING CONTOUR LINE
- - - - - EXISTING TREELINE
- - - - - EXISTING STONEWALL
- - - - - EXISTING UTILITY POLE
- - - - - EXISTING DRAIN MANHOLE
- - - - - EXISTING DRAIN CATCH BASIN
- - - - - EXISTING SIGN
- - - - - WETLAND
- - - - - PROPOSED TREELINE
- - - - - PROPOSED GRAVEL ACCESS DRIVEWAY
- - - - - PROPOSED CONTOUR LINE
- - - - - PROPOSED SILT FENCE

REFERENCE LINE AS DETERMINED BY B.H. KEITH ASSOCIATES



FILE NO. 263
PLAN NO. C-2483
DWG. NO. 08023/SP-2
F.B. NO.

PUBLIC SERVICE COMPANY OF NEW HAMPSHIRE
135 FOOT WIDE RIGHT AND EASEMENT
S.C.R.D. BOOK 3001, PAGE 660

GRADING & EROSION AND SEDIMENTATION CONTROL PLAN

HILLDALE STREET
TAX MAP 113 - LOTS 22 THRU 27
ROCHESTER, NH

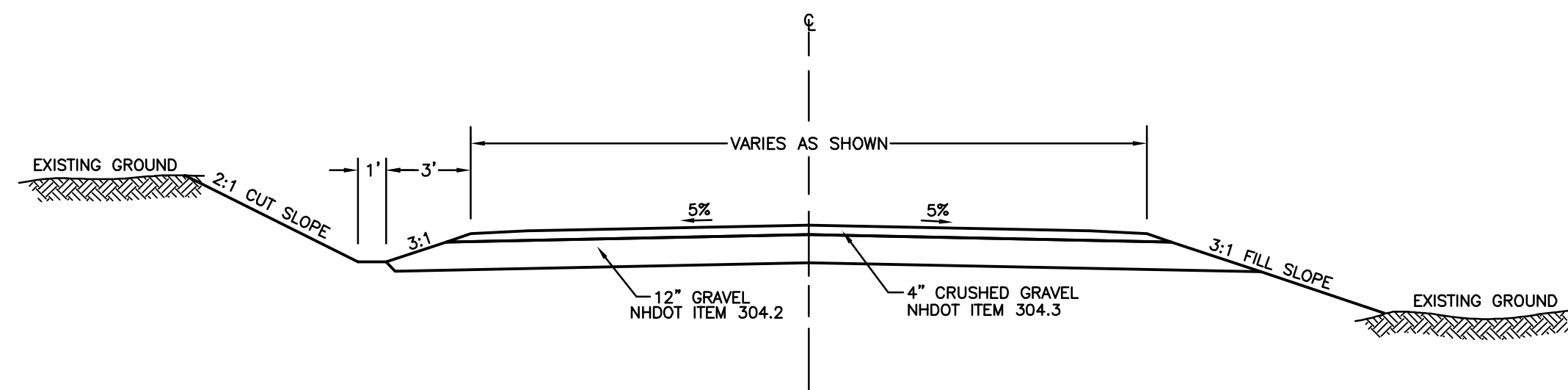
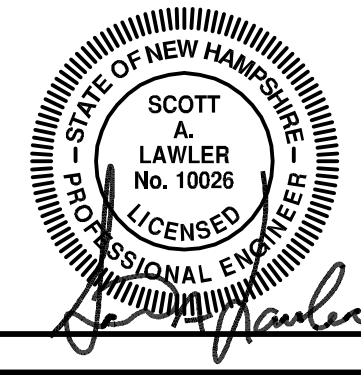
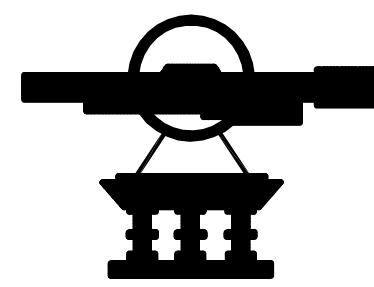
FOR
CITY OF ROCHESTER
SCHOOL DEPARTMENT

SCALE: 1" = 30' FEB. 2009

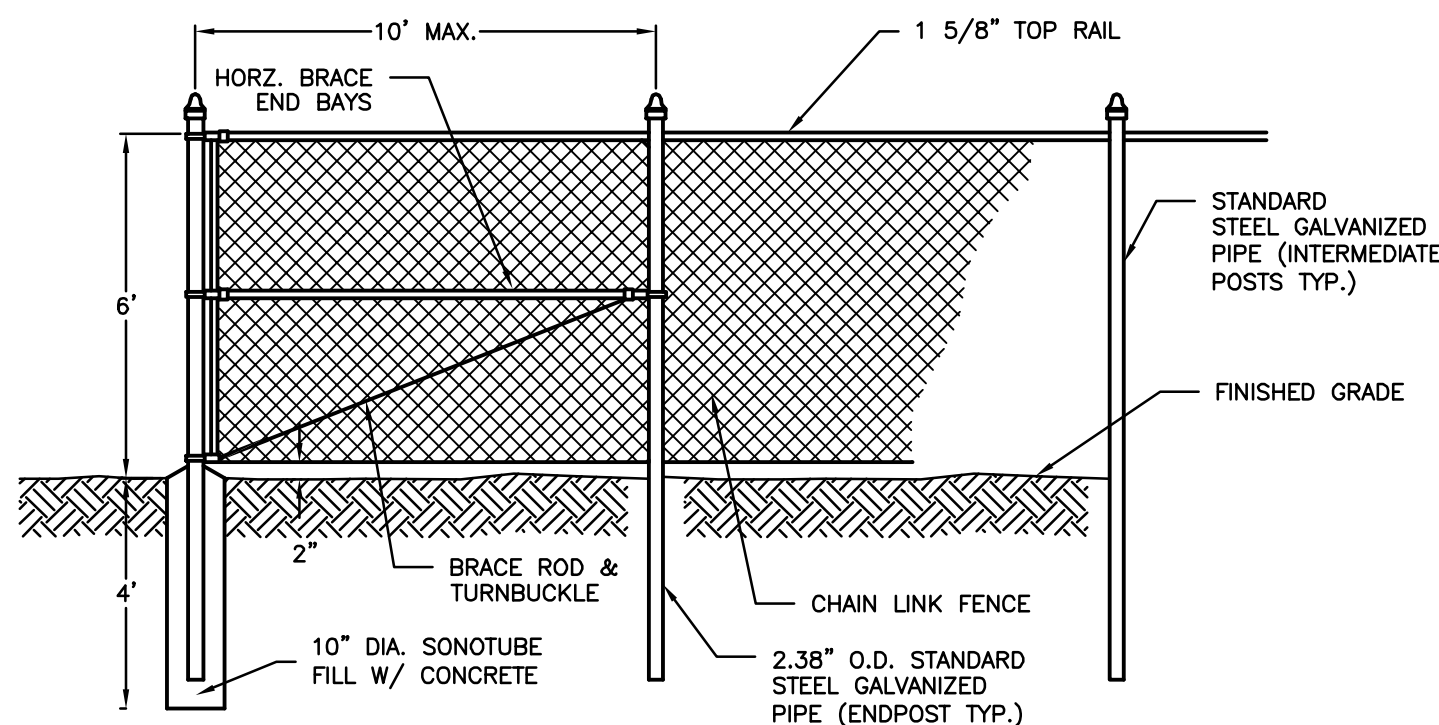
GRAPHIC SCALE



(IN FEET)
1 INCH = 30 FT.
REVISION DATE

**TYPICAL GRAVEL ACCESS DRIVEWAY**

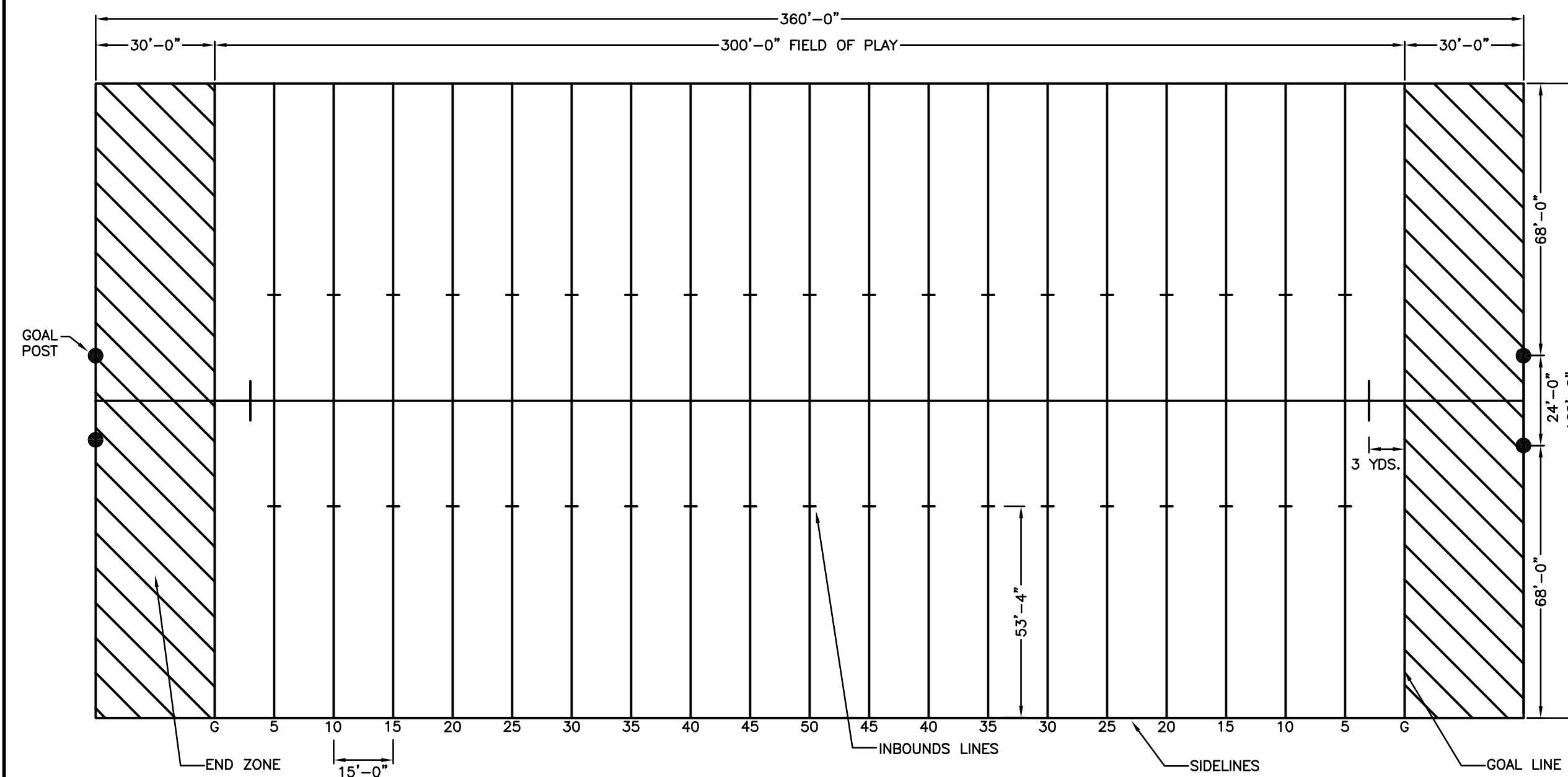
NOT TO SCALE

**TYPICAL CHAINLINK FENCE**

NOT TO SCALE

SHORELAND PROTECTION NOTES:

- A.) WITHIN 3 DAYS OF FINAL GRADING OR TEMPORARY SUSPENSION OF WORK IN AN AREA THAT IS IN THE PROTECTED SHORELAND, ALL EXPOSED SOIL AREAS SHALL BE STABILIZED BY:
1. SEEDING AND MULCHING, IF DURING THE GROWING SEASON;
 2. IF NOT WITHIN THE GROWING SEASON, BY MULCHING WITH TACK OR NETTING; OR
 3. WITH AN ALTERNATIVE METHOD OF TEMPORARY STABILIZATION AS SPECIFIED IN ENV-WQ 1500.
- B.) THERE SHALL BE NO CUTTING OF TREES OR GROUND DISTURBANCE WITHIN 75 FEET OF THE SHORELAND REFERENCE LINE, EITHER DURING OR AFTER CONSTRUCTION OF THE PROPOSED ATHLETIC FIELDS. DEAD, DISEASED OR UNSAFE TREES, LIMBS, SAPLINGS OR SHRUBS MAY BE REMOVED SUBJECT TO THE FOLLOWING CONDITIONS:
1. DAMAGE TO SURROUNDING HEALTHY TREES, LIMBS, SAPLINGS AND SHRUBS IS PREVENTED;
 2. DAMAGE TO GROUND COVER IS MINIMIZED;
 3. SOIL EROSION AND SEDIMENTATION TO THE RIVER IS MINIMIZED; AND
 4. ALL STUMPS ARE LEFT INTACT IN PLACE.
- C.) NO FERTILIZER, EXCEPT LIMESTONE, SHALL BE USED WITHIN 25 FEET OF THE RIVER. BEYOND 25 FEET FROM THE RIVER, LOW PHOSPHATE, SLOW RELEASE NITROGEN FERTILIZER OR LIMESTONE MAY BE USED ON GRASS AREAS.

**TYPICAL FOOTBALL FIELD LAYOUT**

NOT TO SCALE

FILE NO. 263
PLAN NO. C-2483
DWG. NO. 08023/SP-2
F.B. NO.

- CONSTRUCTION SEQUENCE:**
1. THE SMALLEST PRACTICAL AREA SHALL BE DISTURBED DURING CONSTRUCTION, BUT AT IN NO CASE SHALL EXCEED 5 ACRES AT ANY ONE TIME BEFORE DISTURBED AREAS ARE STABILIZED.
 2. INSTALL ALL TEMPORARY EROSION CONTROL MEASURES SUCH AS SILT FENCE AND TEMPORARY CONSTRUCTION EXIT, PERTINENT TO THE CONSTRUCTION OF THE SITE AS SHOWN ON THE "GRADING & EROSION AND SEDIMENTATION CONTROL PLAN" SHEET C3 PRIOR TO ANY EARTH MOVING OPERATIONS.
 3. CLEAR AND GRUB THE EXCAVATION AREA. STUMPS SHALL BE DISPOSED OF OFF-SITE IN ACCORDANCE WITH STATE AND LOCAL REGULATIONS.
 4. REMOVE THE LOAM AND VEGETATION FROM THE EXCAVATION AREAS. STOCKPILE LOAM FOR REUSE AS NEEDED. REFER TO THE EROSION CONTROL STRUCTURES NOTES ON THE "EROSION AND SEDIMENTATION CONTROL DETAILS, SHEET C-5" FOR MAINTENANCE OF THE LOAM STOCKPILES.
 5. PERFORM THE REQUIRED CUTS, STARTING AT THE MIDDLE OF THE SITE AND WORKING OUTWARDS. THE EXCAVATION SHALL BE DONE IN SUCH A MANNER TO CREATE A BOWL WITHIN THE SITE TO ENSURE THE STORM WATER DOES NOT LEAVE THE WORK AREA.
 6. A TEMPORARY EARTHEN BERM SHALL BE INSTALLED AT THE SOUTHEASTERLY CORNER OF THE SITE, WHERE THERE IS A FILL SLOPE. THIS BERM SHALL BE REMOVED ONCE THE FILL SLOPE IS STABILIZED AND AFTER MAJORITY OF THE EXCAVATION IS COMPLETED.
 7. LOAM, SEED AND MULCH THE BOTTOM, SLOPE AREAS OF THE EXCAVATION AREA.
 8. ALL CUT AND FILL SLOPES SHALL BE SEEDED/LOAMED WITHIN 72 HOURS OF ACHIEVING FINISH GRADE.
 9. EROSION CONTROL BLANKETS (\$150 BY NORTH AMERICAN GREEN OR EQUAL) SHALL BE USED ON SLOPES GREATER THAN 2:1 WHERE VEGETATION IS NOT ESTABLISHED.
 10. INSPECT AND REPAIR OR INSTALL ANY REMAINING TEMPORARY EROSION CONTROL MEASURES SUCH AS SILT FENCE AND TEMPORARY CONSTRUCTION EXIT AS SHOWN ON THE "GRADING & EROSION AND SEDIMENTATION CONTROL PLAN" SHEET C3 AT LEAST WEEKLY AND AFTER ANY STORM EVENT OF 0.5 INCHES OR GREATER.
 11. ALL DISTURBED AREAS SHALL BE STABILIZED AS SOON AS POSSIBLE, BUT IN NO CASE SHALL BE LEFT UNSTABILIZED FOR MORE THAN 45 DAYS FROM INITIAL DISTURBANCE.
 12. AN AREA SHALL BE CONSIDERED STABLE IF ONE OF THE FOLLOWING HAS OCCURRED.
 - A. BASE COURSE GRAVEL HAS BEEN INSTALLED IN AREAS TO BE PAVED.
 - B. A MINIMUM OF 85% VEGETATED GROWTH HAS BEEN ESTABLISHED.
 - C. A MINIMUM OF 3" OF NON-EROSIVE MATERIAL SUCH AS STONE OR RIPRAP HAS BEEN INSTALLED; OR
 - D. EROSION CONTROL BLANKETS HAVE BEEN PROPERLY INSTALLED.
 13. REMOVE TEMPORARY EROSION CONTROL (SILT FENCE) TO ELIMINATE FLOW IMPEDIMENTS ONCE SEED HAS GERMINATED AND GRASS IS FIRMLY ESTABLISHED.

HOURS OF OPERATION:

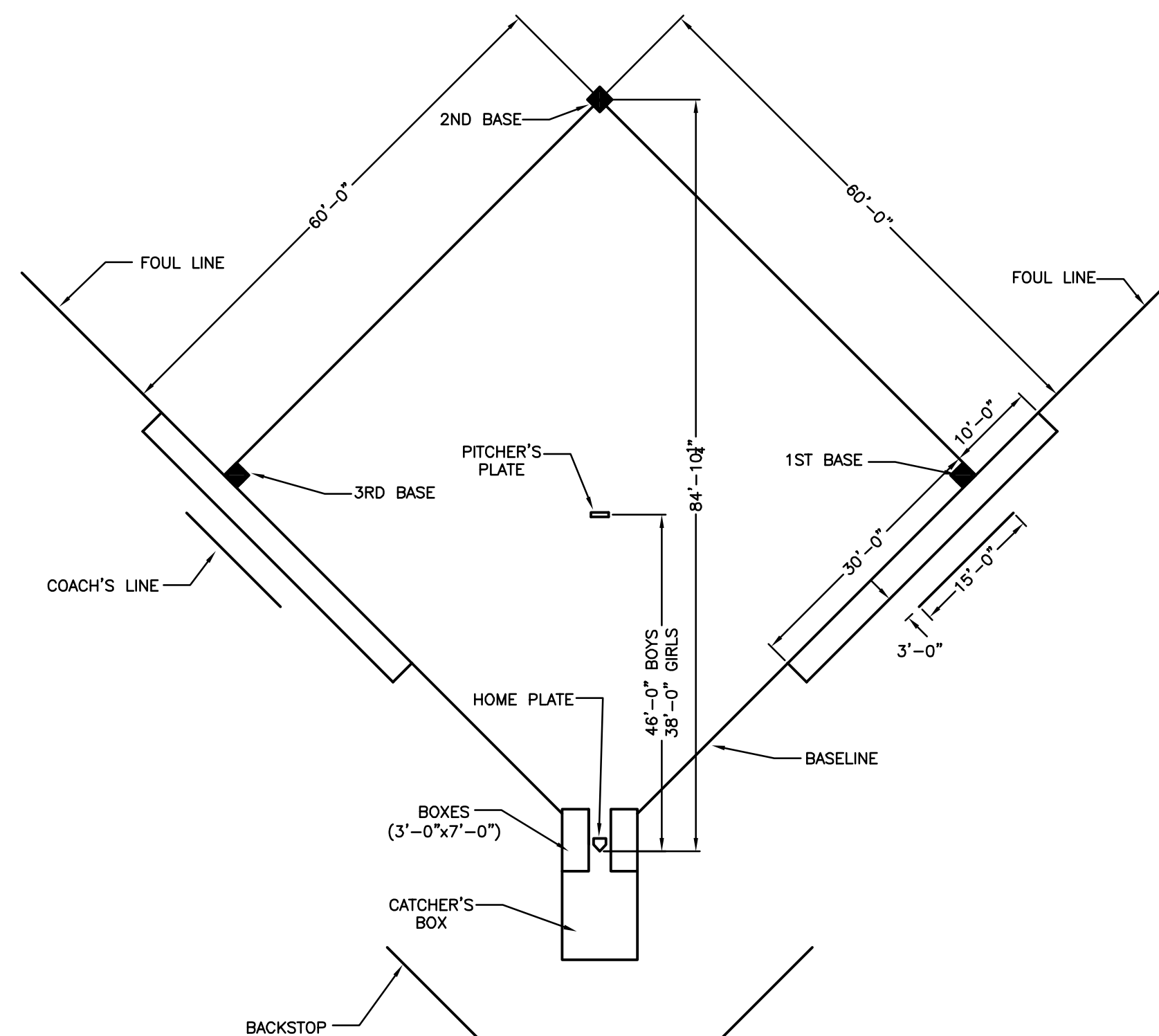
13. CONSTRUCTION OPERATIONS FOR THIS PROJECT SHALL TAKE PLACE AT THE FOLLOWING TIMES:
MONDAY THROUGH FRIDAY: 7:00AM TO 6:00 PM
SATURDAY: 8:00AM TO 6:00PM
14. CONSTRUCTION SHALL TAKE PLACE ONLY AT THE TIMES STATED ABOVE. NO WORK SHALL BE PERFORMED AT ANY OTHER TIME.

DUST CONTROL:

15. DURING ALL PHASES OF CONSTRUCTION DUST SHALL BE PREVENTED FROM BECOMING A SAFETY OR HEALTH HAZARD BY THE IMPLEMENTATION OF ACCEPTED CONTROL METHODS SUCH AS WATERING.

WINTER CONSTRUCTION NOTES:

16. ALL PROPOSED POST-DEVELOPMENT VEGETATED AREAS WHICH DO NOT EXHIBIT A MINIMUM OF 85% VEGETATIVE GROWTH BY OCTOBER 15TH, OR WHICH ARE DISTURBED AFTER OCTOBER 15TH, SHALL BE STABILIZED BY SEEDING AND INSTALLING EROSION CONTROL BLANKETS ON SLOPES GREATER THAN 3:1, AND SEEDING AND PLACING 3 TO 4 TONS OF MULCH PER ACRE, SECURED WITH ANCHORED NETTING, ELSEWHERE. THE PLACEMENT OF EROSION CONTROL BLANKETS OR MULCH AND NETTING SHALL NOT OCCUR OVER ACCUMULATED SNOW OR ON FROZEN GROUND AND SHALL BE COMPLETED IN ADVANCE OF THAW OR SPRING MELT EVENTS.
17. ALL DITCHES OR SWALES WHICH DO NOT EXHIBIT A MINIMUM OF 85% VEGETATIVE GROWTH BY OCTOBER 15TH, OR WHICH ARE DISTURBED AFTER OCTOBER 15TH, SHALL BE STABILIZED WITH STONE OR EROSION CONTROL BLANKETS APPROPRIATE FOR THE DESIGN FLOW CONDITIONS.
18. AFTER NOVEMBER 15TH, INCOMPLETE ROAD OR PARKING SURFACES SHALL BE PROTECTED WITH A MINIMUM OF 3-INCHES OF CRUSHED GRAVEL PER NHDOT ITEM 304.3, OR IF CONSTRUCTION IS TO CONTINUE THROUGH THE WINTER SEASON BE CLEARED OF ANY ACCUMULATED SNOW AFTER EACH STORM EVENT.

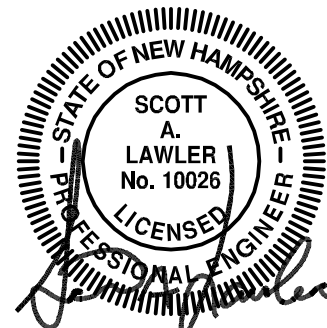
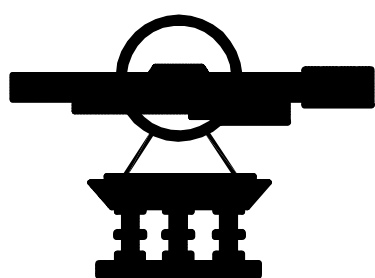
**TYPICAL SOFTBALL DIAMOND LAYOUT**

NOT TO SCALE

SOIL TESTING RESULTS:

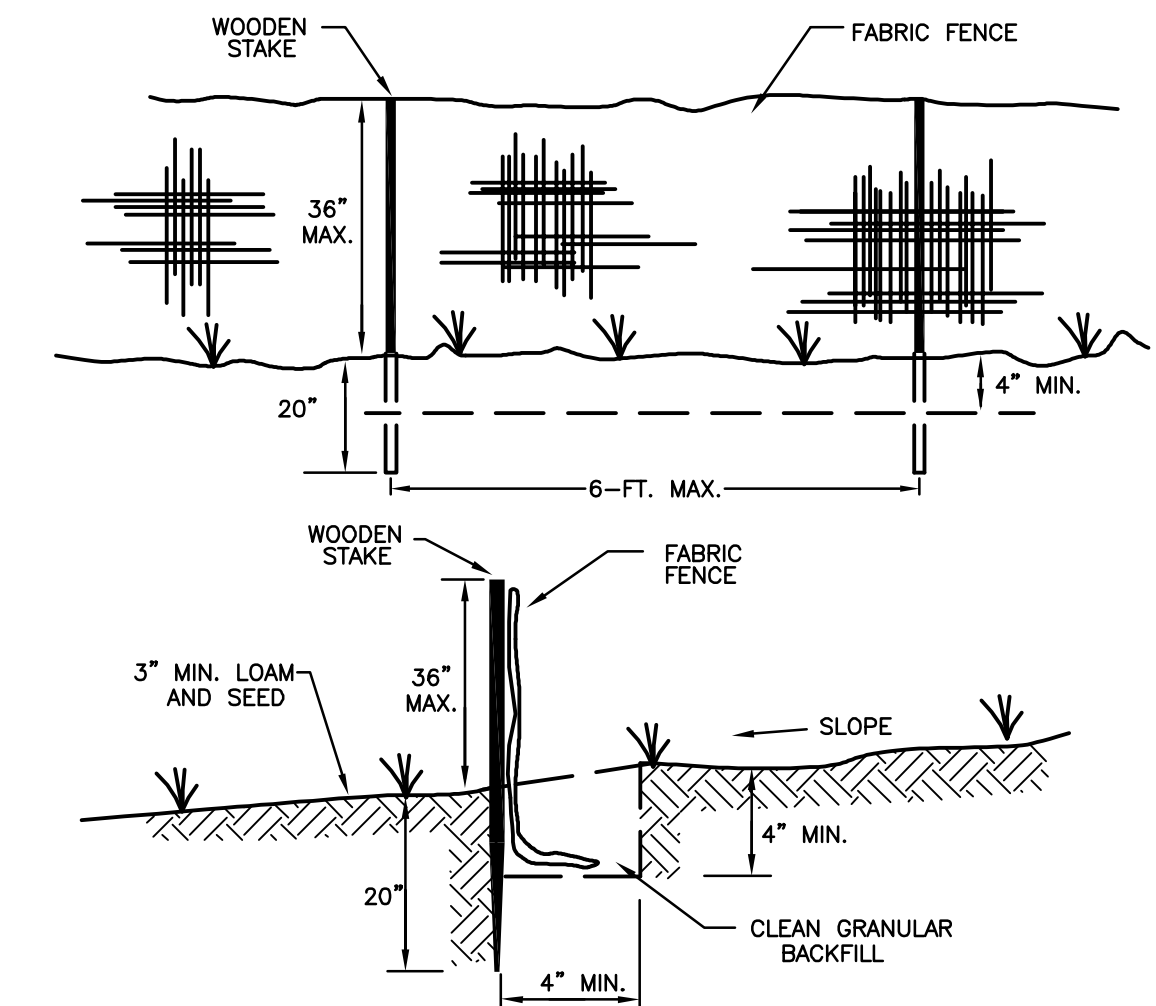
Figure 001										Figure 002																																												
% Cobles					% Gravel					% Sand					% Fines					% Cobles					% Gravel					% Sand					% Fines																			
0.0					0.0					0.0					0.0					0.0					0.0					0.0					0.0					0.0														
0.0					0.0					0.0					0.0					0.0					0.0					0.0					0.0					0.0					0.0									
0.0					0.0					0.0					0.0					0.0					0.0					0.0					0.0					0.0					0.0					0.0				
0.0					0.0					0.0					0.0					0.0					0.0					0.0					0.0					0.0					0.0					0.0				
0.0					0.0					0.0					0.0					0.0					0.0					0.0					0.0					0.0					0.0					0.0				
0.0					0.0					0.0					0.0					0.0					0.0					0.0					0.0					0.0					0.0					0.0				
0.0					0.0					0.0					0.0					0.0					0.0					0.0					0.0					0.0					0.0					0.0				
0.0					0.0					0.0					0.0					0.0					0.0					0.0					0.0					0.0					0.0					0.0				
0.0					0.0					0.0					0.0					0.0					0.0					0.0					0.0					0.0					0.0					0.0				
0.0					0.0					0.0					0.0					0.0					0.0					0.0					0.0					0.0					0.0					0.0				
0.0					0.0					0.0					0.0					0.0					0.0					0.0					0.0					0.0					0.0					0.0				
0.0					0.0					0.0					0.0					0.0					0.0					0.0					0.0					0.0					0.0					0.0				
0.0					0.0					0.0					0.0					0.0					0.0					0.0					0.0					0.0					0.0					0.0				
0.0					0.0					0.0					0.0					0.0					0.0					0.0					0.0					0.0					0.0					0.0				
0.0					0.0					0.0					0.0					0.0					0.0					0.0					0.0					0.0					0.0					0.0				
0.0					0.0					0.0					0.0					0.0					0.0					0.0					0.0					0.0					0.0					0.0				
0.0					0.0					0.0					0.0					0.0					0.0					0.0					0.0					0.0					0.0					0.0				
0.0					0.0					0.0					0.0					0.0					0.0					0.0					0.0					0.0					0.0					0.0				
0.0					0.0					0.0					0.0					0.0					0.0					0.0					0.0					0.0					0.0					0.0				
0.0					0.0					0.0					0.0					0.0					0.0					0.0					0.0					0.0					0.0					0.0				
0.0					0.0					0.0					0.0					0.0					0.0					0.0					0.0					0.0					0.0					0.0				
0.0					0.0					0.0					0.0					0.0					0.0					0.0					0.0					0.0					0.0					0.0				
0.0					0.0					0.0					0.0					0.0					0.0					0.0					0.0					0.0					0.0					0.0				
0.0					0.0					0.0					0.0					0.0					0.0					0.0					0.0					0.0					0.0					0.0				
0.0					0.0					0.0					0.0					0.0					0.0					0.0					0.0					0.0					0.0					0.0				
0.0					0.0					0.0					0.0					0.0					0.0					0.0					0.0					0.0					0.0					0.0				
0.0					0.0					0.0					0.0					0.0					0.0					0.0					0.0					0.0					0.0					0.0				
0.0					0.0					0.0					0.0					0.0					0.0					0.0					0.0					0.0					0.0					0.0				
0.0					0.0					0.0					0.0					0.0					0.0					0.0					0.0					0.0					0.0					0.0				
0.0					0.0					0.0					0.0					0.0					0.0					0.0					0.0					0.0					0.0					0.0				
0.0					0.0					0.0					0.0					0.0					0.0					0.0					0.0					0.0					0.0					0.0				
0.0					0.0					0.0					0.0					0.0					0.0					0.0					0.0					0.0					0.0					0.0				
0.0					0.0					0.0					0.0					0.0					0.0					0.0					0.0					0.0					0.0					0.0				
0.0					0.0					0.0					0.0					0.0					0.0					0.0					0.0					0.0					0.0					0.0				
0.0					0.0					0.0					0.0					0.0					0.0					0.0					0.0					0.0					0.0					0.0				
0.0					0.0					0.0					0.0					0.0					0.0					0.0					0.0					0.0					0.0					0.0				
0.0					0.0					0.0					0.0					0.0					0.0					0.0					0.0					0.0					0.0					0.0				
0.0					0.0					0.0					0.0					0.0					0.0					0.0					0.0					0.0					0.0					0.0				
0.0					0.0					0.0					0.0					0.0					0.0					0.0					0.0					0.0					0.0					0.0				
0.0					0.0					0.0					0.0					0.0					0.0					0.0					0.0					0.0					0.0					0.0				
0.0					0.0					0.0					0.0					0.0					0.0					0.0					0.0					0.0					0.0					0.0				
0.0					0.0					0.0					0.0					0.0					0.0					0.0					0.0					0.0					0.0					0.0				
0.0					0.0					0.0					0.0					0.0					0.0					0.0					0.0					0.0					0.0					0.0				
0.0					0.0					0.0					0.0					0.0					0.0					0.0					0.0					0.0					0.0					0.0				
0.0					0.0					0.0					0.0					0.0					0.0					0.0					0.0					0.0					0.0					0.0				
0.0					0.0					0.0					0.0					0.0					0.0					0.0					0.0					0.0					0.0					0.0				
0.0					0.0					0.0					0.0					0.0					0.0					0.0					0.0					0.0					0.0					0.0				
0.0					0.0					0.0					0.0					0.0					0.0					0.0					0.0					0.0					0.0					0.0				
0.0					0.0					0.0					0.0					0.0					0.0					0.0					0.0					0.0					0.0					0.0				
0.0					0.0					0.0					0.0					0.0					0.0					0.0					0.0					0.0					0.0					0.0				
0.0					0.0					0.0					0.0					0.0					0.0					0.0					0.0					0.0					0.0					0.0				
0.0					0.0					0.0					0.0					0.0					0.0					0.0					0.0					0.0					0.0					0.0				
0.0					0.0					0.0					0.0					0.0					0.0					0.0					0.0					0.0					0.0					0.0				
0.0					0.0					0.0					0.0					0.0					0.0					0.0					0.0					0.0					0.0					0.0				
0.0					0.0					0.0					0.0					0.0					0.0					0.0					0.0					0.0					0.0					0.0				
0.0					0.0					0.0					0.0					0.0					0.0					0.0					0.0					0.0					0.0					0.0				
0.0					0.0					0.0					0.0					0.0					0.0					0.0					0.0					0.0					0.0					0.0				
0.0					0.0					0.0					0.0					0.0					0.0					0.0					0.0					0.0					0.0					0.0				
0.0					0.0					0.0					0.0					0.0					0.0					0.0					0.0					0.0					0.0					0.0				
0.0					0.0					0.0					0.0					0.0					0.0					0.0					0.0					0.0					0.0					0.0				
0.0					0.0					0.0					0.0					0.0					0.0					0.0					0.0					0.0					0.0					0.0				
0.0					0.0					0.0					0.0					0.0					0.0					0.0					0.0					0.0					0.0					0.0				
0.0					0.0					0.0					0.0					0.0					0.0					0.0					0.0					0.0					0.0					0.0				
0.0					0.0					0.0					0.0					0.0					0.0					0.0					0.0					0.0					0.0					0.0				
0.0					0.0					0.0					0.0					0.0					0.0					0.0					0.0					0.0					0.0					0.0				
0.0					0.0					0.0					0.0					0.0					0.0					0.0					0.0					0.0					0.0					0.0				
0.0					0.0					0.0					0.0					0.0					0.0					0.0					0.0					0.0					0.0					0.0				
0.0					0.0					0.0					0.0					0.0					0.0					0.0					0.0					0.0					0.0					0.0				
0.0					0.0					0.0					0.0					0.0					0.0					0.0					0.0					0.0					0.0					0.0				
0.0					0.0					0.0					0.0					0.0					0.0					0.0					0.0					0.0					0.0					0.0				
0.0					0.0					0.0					0.0					0.0					0.0					0.0					0.0					0.0					0.0					0.0				
0.0					0.0					0.0					0.0					0.0					0.0					0.0					0.0					0.0					0.0					0.0				
0.0					0.0					0.0					0.0					0.0					0.0					0.0					0.0					0.0					0.0					0.0				
0.0					0.0					0.0					0.0					0.0					0.0					0.0					0.0					0.0					0.0					0.0				
0.0					0.0					0.0					0.0					0.0					0.0					0.0					0.0					0.0					0.0					0.0				
0.0					0.0					0.0					0.0					0.0					0.0					0.0					0.0					0.0					0.0					0.0				
0.0					0.0					0.0					0.0					0.0					0.0					0.0					0.0					0.0					0.0					0.0				
0.0					0.0					0.0					0.0					0.0					0.0					0.0					0.0					0.0					0.0					0.0				
0.0					0.0					0.0					0.0					0.0					0.0					0.0					0.0					0.0					0.0					0.0				
0.0					0.0					0.0					0.0					0.0					0.0					0.0					0.0					0.0					0.0					0.0				
0.0					0.0					0.0					0.0					0.0					0.0					0.0					0.0					0.0					0.0					0.0				
0.0					0.0					0.0					0.0					0.0					0.0					0.0					0.0					0.0					0.0					0.0				
0.0					0.0					0.0					0.0					0.0					0.0					0.0					0.0					0.0					0.0					0.0				
0.0					0.0					0.0					0.0					0.0					0.0					0.0					0.0					0.0					0.0					0.0				
0.0					0.0					0.0					0.0					0.0					0.0					0.0					0.0					0.0					0.0					0.0				
0.0					0.0					0.0					0.0					0.0					0.0					0.0					0.0					0.0					0.0					0.0				
0.0					0.0					0.0					0.0					0.0					0.0					0.0					0.0					0.0					0.0					0.0				
0.0					0.0					0.0					0.0					0.0					0.0					0.0					0.0					0.0					0.0					0.0				
0.0					0.0					0.0					0.0					0.0					0.0					0.0					0.0					0.0					0.0					0.0				
0.0					0.0					0.0					0.0					0.0					0.0					0.0					0.0					0.0					0.0					0.0				
0.0					0.0					0.0					0.0					0.0					0.0					0.0					0.0					0.0					0.0					0.0				
0.0					0.0					0.0					0.0					0.0					0.0					0.0					0.0					0.0					0.0					0.0				
0.0					0.0					0.0					0.0					0.0					0.0					0.0					0.0					0.0					0.0					0.0				
0.0					0.0					0.0					0.0					0.0					0.0					0.0					0.0					0.0					0.0					0.0				
0.0					0.0					0.0					0.0					0.0					0.0					0.0					0.0					0.0					0.0					0.0				
0.0					0.0					0.0					0.0					0.0					0.0					0.0					0.0					0.0					0.0					0.0				
0.0					0.0					0.0					0.0					0.0					0.0					0.0					0.0					0.0					0.0					0.0				
0.0					0.0					0.0					0.0					0.0					0.0					0.0					0.0					0.0					0.0					0.0				
0.0					0.0					0.0					0.0																																							

CONSTRUCTION DETAILS
HILLSDALE STREET
TAX MAP 113 - LOTS 22 THRU 27
ROCHESTER, NH
 FOR
CITY OF ROCHESTER
SCHOOL DEPARTMENT
 SCALE: 1" = 50' FEB. 2009



REVISIONS

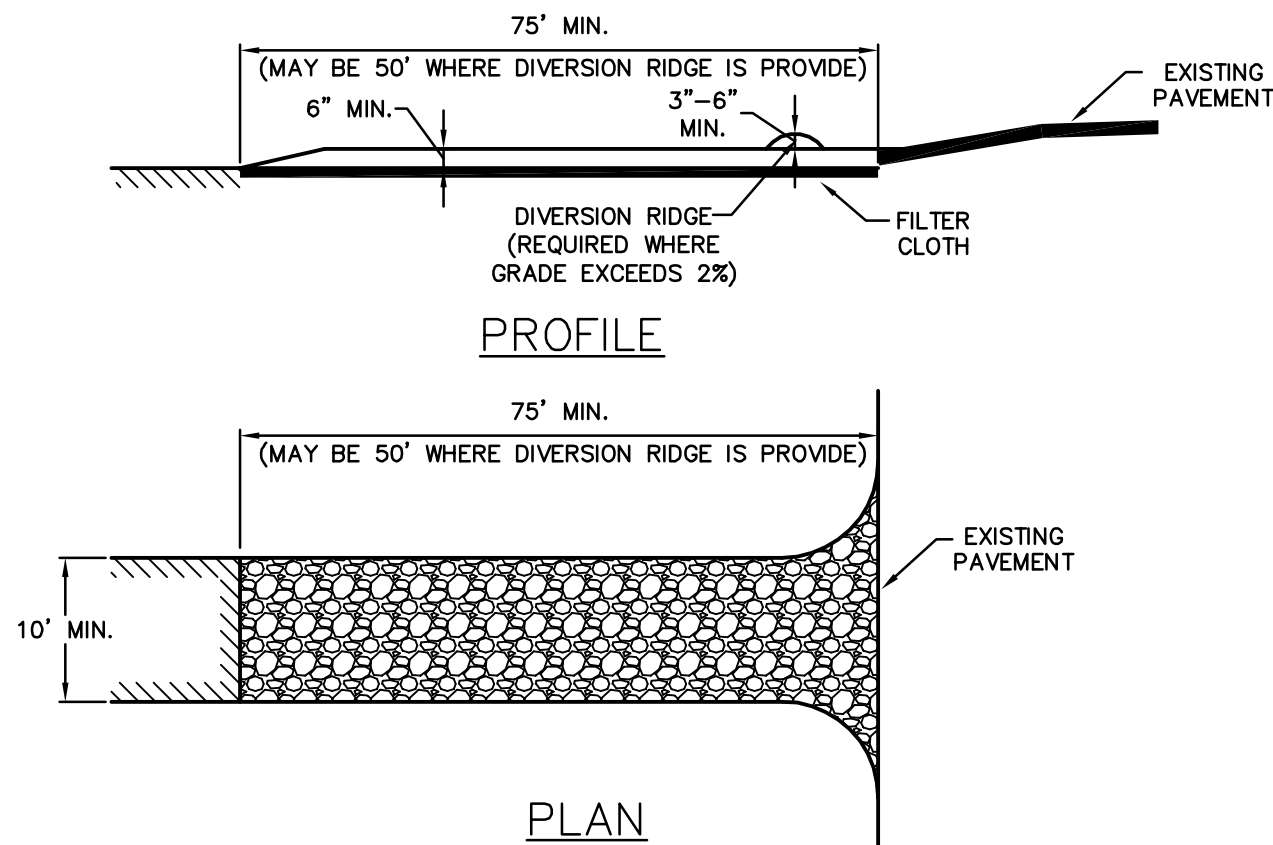
03/15/10 - REVISE SEEDING FOR LONG TERM COVER AND ADD SEEDING REQUIREMENTS FOR ATHLETIC FIELD SURFACES.



SILTATION CONTROL FENCE DETAIL

NOT TO SCALE

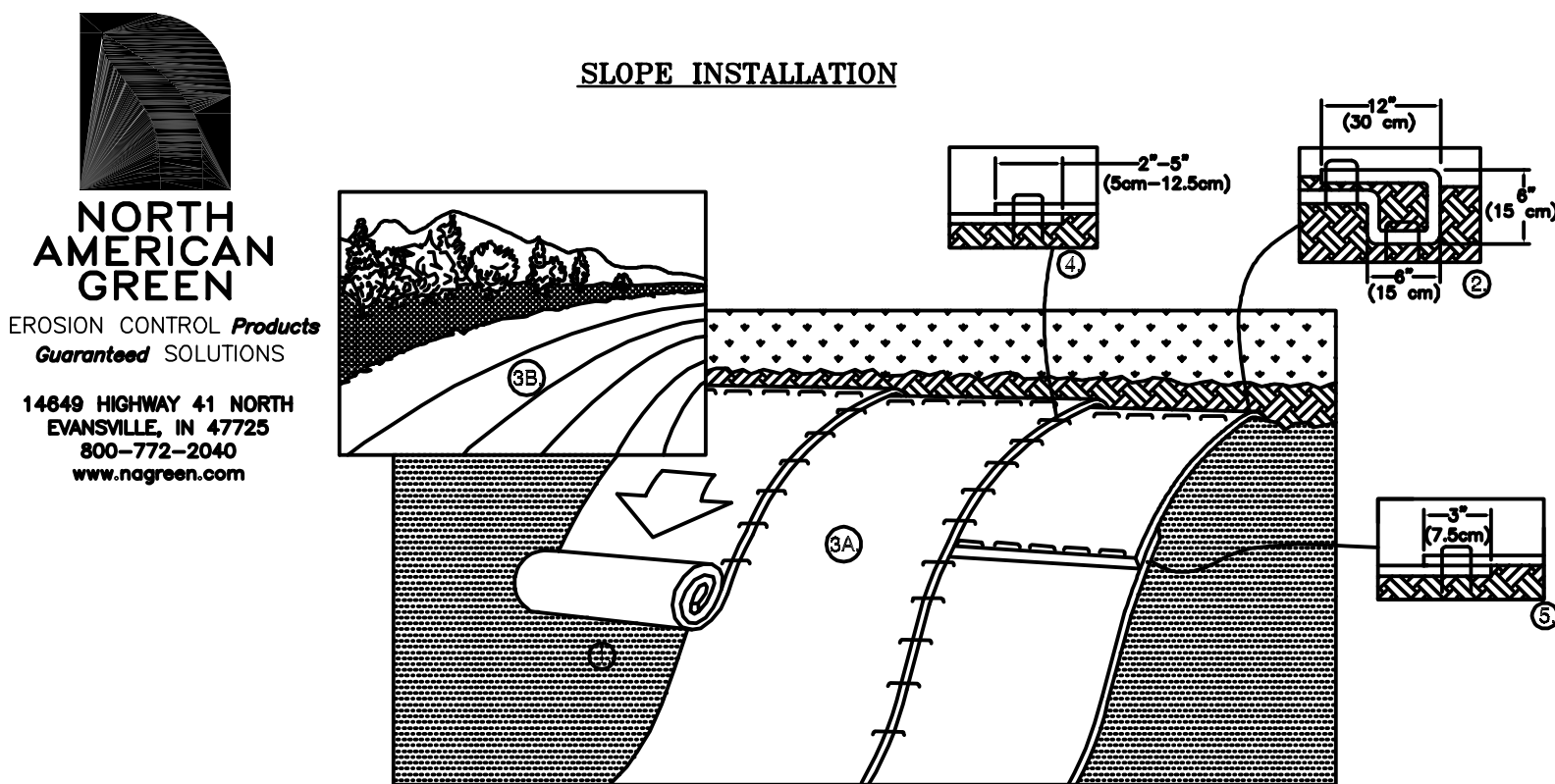
- MAINTENANCE REQUIREMENTS:**
- FENCES SHOULD BE INSPECTED AND MAINTAINED IMMEDIATELY AFTER EACH RAINFALL AND AT LEAST DAILY DURING PROLONGED RAINFALLS;
 - SEDIMENT DEPOSITION SHOULD BE REMOVED, AT A MINIMUM, WHEN DEPOSITION ACCUMULATES TO ONE-HALF THE HEIGHT OF THE FENCE, AND MOVED TO AN APPROPRIATE LOCATION SO THE SEDIMENT IS NOT READILY TRANSPORTED BACK TOWARD THE SILT FENCE;
 - SILT FENCES SHOULD BE REPAIRED IMMEDIATELY IF THERE ARE ANY SIGNS OF EROSION OR SEDIMENTATION BELOW THEM. IF THERE ARE SIGNS OF UNDERCUTTING AT THE CENTER OR THE EDGES OF THE BARRIER, OR IMPOUNDING OF LARGE VOLUMES OF WATER BEHIND THEM, SEDIMENT BARRIERS SHOULD BE REPLACED WITH A TEMPORARY CHECK DAM;
 - SHOULD THE FABRIC ON A SILT FENCE DECOMPOSE OR BECOME INEFFECTIVE PRIOR TO THE END OF THE EXPECTED USABLE LIFE AND THE BARRIER'S FABRIC SHOULD BE RE-CEC PROMPTLY;
 - ANY SEDIMENT DEPOSITS REMAINING IN PLACE AFTER THE SILT FENCE IS NO LONGER REQUIRED SHOULD BE DRESSED TO CONFORM TO THE EXISTING GRADE PREPARED AND SEEDED;
 - IF THERE IS EVIDENCE OF END FLOW ON PROPERLY INSTALLED BARRIERS, EXTEND BARRIERS UPHILL OR CONSIDER REPLACING THEM WITH OTHER MEASURES, SUCH AS TEMPORARY DIVERSIONS AND SEDIMENT TRAPS;
 - SILT FENCES HAVE A USEFUL LIFE OF ONE SEASON, ON LONGER CONSTRUCTION PROJECTS, SILT FENCE SHOULD BE REPAIRED PERIODICALLY AS REQUIRED TO MAINTAIN EFFECTIVENESS.
- CONSTRUCTION SPECIFICATIONS:**
- FENCES SHOULD BE USED IN AREAS WHERE EROSION WILL OCCUR ONLY IN THE FORM OF SHEET EROSION AND THERE IS NO CONCENTRATION OF WATER IN A CHANNEL OR DRAINAGE WAY ABOVE THE FENCE. SEDIMENT BARRIERS SHOULD BE INSTALLED PRIOR TO ANY SOIL DISTURBANCE OF THE CONTRIBUTING DRAINAGE AREA ABOVE THEM;
 - THE MAXIMUM CONTRIBUTING DRAINAGE AREA ABOVE THE FENCE SHOULD BE LESS THAN 1A ACRE PER 100 LINEAR FEET OFFENCE;
 - THE MAXIMUM LENGTH OF SLOPE ABOVE THE FENCE SHOULD BE 100 FEET;
 - THE MAXIMUM SLOPE ABOVE THE FENCE SHOULD BE 2:1;
 - FENCES SHOULD BE INSTALLED FOLLOWING THE CONTOUR OF THE LAND AS CLOSELY AS POSSIBLE, AND
 - THE ENDS OF THE FENCE SHOULD BE FLARED UPSLOPE;
 - THE FABRIC SHOULD BE EMBEDDED A MINIMUM OF 4 INCHES IN DEPTH AND INCHES IN WIDTH IN A TRENCH EXCAVATED INTO THE GROUND, OR IF SITE CONDITIONS INCLUDE FROZEN GROUND, LEDGE, OR THE PRESENCE OF HEAVY ROOTS, THE BASE OF THE FABRIC SHOULD BE EMBEDDED WITH A MINIMUM THICKNESS OF 8 INCHES OF 3/4-INCH STONE;
 - THE SOIL SHOULD BE COMPACTED OVER THE EMBEDDED FABRIC;
 - SUPPORT POSTS SHOULD BE SIZED AND ANCHORED ACCORDING TO THE MANUFACTURER'S INSTRUCTIONS WITH MAXIMUM POST SPACING OF 6 FEET;
 - ADJOINING SECTIONS OF THE FENCE SHOULD BE OVERLAPPED BY A MINIMUM OF 6 INCHES (24 INCHES IS PREFERRED), FOLDED AND STAPLED TO A SUPPORT POST. IF METAL POSTS ARE USED, FABRIC SHOULD BE WIRE-TIED DIRECTLY TO THE POSTS WITH THREE DIAGONAL TIES.
 - SILT FENCING SHOULD NOT BE STAPLED OR NAILED TO TREES;
 - THE FILTER FABRIC SHOULD BE A PERVIOUS SHEET OF PROPYLENE, NYLON, POLYESTER OR ETHYLENE YARN AND SHOULD BE CERTIFIED BY THE MANUFACTURER OR SUPPLIER;
 - THE FILTER FABRIC SHOULD CONTAIN ULTRAVIOLET RAY INHIBITORS AND STABILIZERS TO PROVIDE A MINIMUM OF 6 MONTHS OF EXPECTED USABLE CONSTRUCTION LIFE AT A TEMPERATURE RANGE OF 0 DEGREES FAHRENHEIT TO 120 DEGREES FAHRENHEIT;
 - POSTS FOR SILT FENCES SHOULD BE EITHER 4-INCH DIAMETER WOOD OR 1.33 POUNDS PER LINEAR FOOT STEEL WITH A MINIMUM LENGTH OF 5 FEET. STEEL POSTS SHOULD HAVE PROJECTIONS FOR FASTENING WIRE TO THEM. POSTS SHOULD BE PLACED ON THE DOWN SLOPE SIDE OF THE FABRIC;
 - THE HEIGHT OF A SILT FENCE SHOULD NOT EXCEED 36 INCHES AS HIGHER FENCES MAY IMPOUND VOLUMES OF WATER SUFFICIENT TO CAUSE FAILURE OF THE STRUCTURE;
 - THE FILTER FABRIC SHOULD BE PURCHASED IN A CONTINUOUS ROLL CUT TO THE LENGTH OF THE BARRIER TO AVOID THE USE OF JOINTS. WHEN JOINTS ARE NECESSARY, FILTER CLOTH SHOULD BE SPICED TOGETHER ONLY AT SUPPORT POSTS, WITH A MINIMUM 6-INCH OVERLAP, AND SECURELY SEALED;
 - A MANUFACTURED SILT FENCE SYSTEM WITH INTEGRAL POSTS MAY BE USED;
 - POST SPACING SHOULD NOT EXCEED 6 FEET;
 - A TRENCH SHOULD BE EXCAVATED APPROXIMATELY 4 INCHES WIDE AND 4 INCHES DEEP ALONG THE LINE OF POSTS AND UP GRADIENT FROM THE BARRIER;
 - THE STANDARD STRENGTH OF FILTER FABRIC SHOULD BE STAPLED OR WIRED TO THE POST, AND 8 INCHES OF THE FABRIC SHOULD BE EXTENDED INTO THE TRENCH. THE FABRIC SHOULD NOT EXTEND MORE THAN 36 INCHES ABOVE THE ORIGINAL GROUND SURFACE;
 - THE TRENCH SHOULD BE BACKFILLED AND THE SOIL COMPACTED OVER THE FILTER FABRIC;
 - SILT FENCE MAY BE INSTALLED BY "SLICING" USING MECHANICAL EQUIPMENT SPECIFICALLY DESIGNED FOR THIS PROCEDURE. THE SLICING METHOD USES AN IMPLEMENT TOWED BEHIND A TRACTOR TO "PLOW" OR SLICE THE SILT FENCE MATERIAL INTO THE SOIL. THE SLICING METHOD MINIMALLY DISRUPTS THE SOIL UPWARD AND SLIGHTLY DISPLACES THE SOIL, MAINTAINING THE SOIL'S PROFILE AND CREATING AN OPTIMAL CONDITION FOR SUBSEQUENT MECHANICAL COMPACTION;
 - SILT FENCES SHOULD BE INSTALLED WITH "SMILES" OR "J-HOCKS" TO REDUCE THE DRAINAGE AREA THAT ANY SEGMENT WILL IMPOUND;
 - THE ENDS OF THE FENCE SHOULD BE TURNED UPHILL;
 - SILT FENCES PLACED AT THE TOE OF A SLOPE SHOULD BE SET AT LEAST 6 FEET FROM THE TOE TO ALLOW SPACE FOR SHALLOW PONDING AND TO ALLOW FOR MAINTENANCE ACCESS WITHOUT DISTURBING THE SLOPE;
 - SILT FENCES SHOULD BE REMOVED WHEN THEY HAVE SERVED THEIR USEFUL PURPOSE, BUT NOT BEFORE THE UPSLOPE AREAS HAVE BEEN PERMANENTLY STABILIZED.



- MAINTENANCE REQUIREMENTS:**
- WHEN THE CONTROL PAD BECOMES INEFFECTIVE, THE STONE SHOULD BE REMOVED ALONG WITH THE COLLECTED SOIL MATERIAL, REGRADED ON SITE, AND STABILIZED. THE ENTRANCE SHOULD THEN BE RECONSTRUCTED;
 - THE CONTRACTOR SHOULD SWEEP THE PAVEMENT AT EXITS WHENEVER SOIL MATERIALS ARE TRACKED ONTO THE ADJACENT PAVEMENT OR TRAVELED WAY;
 - WHEN WHEEL WASHING IS REQUIRED, IT SHOULD BE CONDUCTED ON AN AREA STABILIZED WITH AGGREGATE, WHICH DRAINS INTO AN APPROVED SEDIMENT-TRAPPING DEVICE. ALL SEDIMENT SHOULD BE PREVENTED FROM ENTERING STORM DRAINS, DITCHES, OR WATERWAYS;
- CONSTRUCTION SPECIFICATIONS:**
- THE MINIMUM STONE USED SHOULD BE 3-INCH CRUSHED STONE;
 - THE MINIMUM LENGTH OF THE PAD SHOULD BE 75 FEET, EXCEPT THAT THE MINIMUM LENGTH MAY BE REDUCED TO 50 FEET IF A 3-INCH TO 6-INCH BERM IS INSTALLED AT THE ENTRANCE OF THE PROJECT SITE;
 - THE PAD SHOULD BE THE FULL WIDTH OF CONSTRUCTION ACCESS ROAD OR 10 FEET, WHICHEVER IS GREATER;
 - THE PAD SHOULD SLOPE AWAY FROM THE EXISTING ROADWAY;
 - THE PAD SHOULD BE AT LEAST 6 INCHES THICK;
 - THE GEOTEXTILE FILTER FABRIC SHOULD BE PLACED BETWEEN THE STONE PAD AND THE EARTH SURFACE BELOW THE PAD;
 - THE PAD SHOULD BE MAINTAINED OR REPLACED WHEN MUD AND SOIL PARTICLES CLOG THE VOIDS IN THE STONE SUCH THAT MUD AND SOIL PARTICLES ARE TRACKED OFF-SITE;
 - NATURAL DRAINAGE THAT CROSSES THE LOCATION OF THE STONE PAD SHOULD BE INTERCEPTED AND PIPED BENEATH THE PAD, AS NECESSARY, WITH SUITABLE OUTLET PROTECTION.

TEMPORARY CONSTRUCTION EXIT

NOT TO SCALE



TEMPORARY EROSION CONTROL BLANKET DETAIL

NOT TO SCALE

- MAINTENANCE REQUIREMENTS:**
- ALL BLANKET AND MATS SHOULD BE INSPECTED WEEKLY DURING THE CONSTRUCTION PERIOD, AND AFTER ANY RAINFALL EVENT EXCEEDING 1/2 INCH IN A 24-HOUR PERIOD;
 - ANY FAILURE SHOULD BE REPAIRED IMMEDIATELY. IF WASHOUT OF THE SLOPE, DISPLACEMENT OF THE MAT, OR DAMAGE TO THE MAT OCCURS, THE AFFECTED SLOPE SHALL BE REPAIRED AND RESEEDED, AND THE AFFECTED AREA OF MAT SHALL BE RE-INSTALLED.
- CONSTRUCTION SPECIFICATIONS:**
- MANUFACTURE'S INSTALLATION INSTRUCTIONS:
 - PREPARE SOIL BEFORE INSTALLING ROLLED EROSION CONTROL PRODUCTS (RECP's), INCLUDING ANY NECESSARY APPLICATION OF LIME, FERTILIZER, AND SEED.
NOTE: WHEN USING CELL-O-SEED DO NOT SEED PREPARED AREA. CELL-O-SEED MUST BE INSTALLED WITH PAPER SIDE DOWN.
 - BEGIN AT THE TOP OF THE SLOPE BY ANCHORING THE RECP's IN A 6" (15 CM) DEEP X 6" (15 CM) WIDE TRENCH WITH APPROXIMATELY 12" (30cm) OF RECP's EXTENDED BEYOND THE UP-SLOPE PORTION OF THE TRENCH. ANCHOR THE RECP's WITH A ROW OF STAPLES/STAKES APPROXIMATELY 12" (30 CM) APART IN THE BOTTOM OF THE TRENCH. BACKFILL AND COMPACT THE TRENCH AFTER STAPLING. APPLY SEED TO COMPACTED SOIL AND FOLD REMAINING 12" (30 CM) PORTION OF RECP's BACK OVER SEED AND COMPACTED SOIL. SECURE RECP's OVER COMPACTED SOIL WITH A ROW OF STAPLES/STAKES SPACED APPROXIMATELY 12" (30 CM) APART ACROSS THE WIDTH OF THE RECP's.
 - ROLL THE RECP's (A) DOWN OR (B) HORIZONTALLY ACROSS THE SLOPE. RECP's WILL UNROLL WITH APPROPRIATE SIDE AGAINST THE SOIL SURFACE. ALL RECP's MUST BE SECURELY FASTENED TO SOIL SURFACE BY PLACING STAPLES/STAKES IN APPROPRIATE LOCATIONS AS SHOWN IN THE STAPLE PATTERN GUIDE. WHEN USING THE DOT SYSTEM, STAPLES/STAKES SHOULD BE PLACED THROUGH EACH OF THE COLORED DOTS CORRESPONDING TO THE APPROPRIATE STAPLE PATTERN.
 - THE EDGES OF PARALLEL RECP's MUST BE STAPLED WITH APPROXIMATELY 2" - 5" (5 CM - 12.5 CM) OVERLAP DEPENDING ON RECP's TYPE.
 - CONSECUTIVE RECP's SPICED DOWN THE SLOPE MUST BE PLACED END OVER END (SHINGLE STYLE) WITH AN APPROXIMATE 3" (7.5 CM) OVERLAP. STAPLE THROUGH OVERLAPPED AREA, APPROXIMATELY 12" (30 CM) APART ACROSS ENTIRE RECP's WIDTH.
NOTE: IN LOOSE SOIL CONDITIONS, THE USE OF STAPLE OR STAKE LENGTHS GREATER THAN 6" (15 CM) MAY BE NECESSARY TO PROPERLY SECURE THE RECP's.
 - SITE PREPARATION:
 - PROPER SITE PREPARATION IS ESSENTIAL TO ENSURE COMPLETE CONTACT OF THE PROTECTION MATTING WITH THE SOIL.
 - GRADE AND SHAPE AREA IF INSTALLATION.
 - REMOVE ALL ROCKS, CLODS, TRASH, VEGETATIVE OR OTHER OBSTRUCTIONS SO THAT THE INSTALLED BLANKETS WILL HAVE DIRECT CONTACT WITH THE SOIL.
 - PREPARE, SEEDBED BY LOOSENING 2-3 INCHES OF TOPSOIL ABOVE FINAL GRADE.
 - INCORPORATE AMENDMENTS, SUCH AS LIME AND FERTILIZER, INTO SOIL ACCORDING TO SOIL TEST AND THE SEEDING PLAN.
 - SEEDING:
 - SEED AREA BEFORE BLANKET INSTALLATION FOR EROSION CONTROL AND REVEGETATION. SEEDING AFTER MAT INSTALLATION IS OFTEN SPECIFIED FOR TURF REINFORCEMENT APPLICATIONS. WHEN SEEDING PRIOR TO BLANKET INSTALLATION, ALL CHECK SLOTS AND OTHER AREAS DISTURBED DURING INSTALLATION MUST BE RESEEDED.
 - WHEN SOIL FILLING IS SPECIFIED, SEED THE MATTING AND THE ENTIRE DISTURBED AREA AFTER INSTALLATION AND PRIOR TO FILLING THE MAT WITH SOIL.

EROSION CONTROL STRUCTURES:

- INSTALL ALL SILT FENCE, HAY BALES AND ANY CONSTRUCTION FENCE PRIOR TO BEGINNING CONSTRUCTION;
- INSTALL SOD IN ALL SWALES IMMEDIATELY AFTER THEY ARE CONSTRUCTED;
- SEEDING FOR LONG TERM COVER (NOT INCLUDING ATHLETIC FIELD SURFACES):

SEED MIXTURE:	LBS./ACRE	LBS./1000 SQ. FT.
TALL FESCUE	20	0.45
CREeping RED FESCUE	20	0.45
BIRDSEED TREFOIL	8	0.20
TOTAL	48	1.10

NOTE: BIRDSEED TREFOIL MUST BE INOCULATED.
- SEEDING FOR ATHLETIC FIELD SURFACES:

SEED MIXTURE:	LBS./ACRE	LBS./1000 SQ. FT.
PERENNIAL RYEGRASS	100	2.3
KENTUCKY BLUEGRASS	100	2.3
TOTAL	200	4.6
- IF SOIL TEST IS NOT AVAILABLE THE FOLLOWING MINIMUM AMOUNTS SHALL BE USED:
LIME - 2 TONS/ACRE OR 100 LBS/1000 SQ. FT.
FERTILIZER - 500 LBS/ACRE OF 10-20-20 OR EQUAL
- THE ABOVE SPECIFICATION FOR GRASS SEED SHALL BE USED FOR THE DETENTION BASINS.
- SEEDING FOR TEMPORARY PROTECTION:

SEED MIXTURE:	LBS./ACRE	LBS./1000 SQ. FT.
WINTER RYE	112	2.50
- LOAM STOCKPILES: SEED LOAM STOCKPILES IN ACCORDANCE WITH NOTE #5 OF THE ABOVE IF TO BE STOCKPILED FOR 30 DAYS OR MORE. SILTFENCE SHALL BE INSTALLED AT THE TOE OF THE STOCKPILE ON THE DOWN GRADIENT SIDE ALONG 1/2 THE CIRCUMFERENCE OF THE STOCKPILE MINIMUM.
- HAY OR STRAW MULCH SHALL BE PLACED ON ALL DISTURBED AREAS AT A RATE OF 2 TONS/ACRE OR 90 LBS/1000 SQ. FT.
- STONE RIP RAP SHALL BE PLACED AT OUTLETS AS SHOWN ON THE PLANS.
- HAY BALE DAMS SHALL BE INSTALLED IMMEDIATELY AFTER CONSTRUCTION AS SHOWN ON THE PLANS.
- RIP RAP, HAY BALES, AND EROSION CONTROL MATTING SHALL NOT BE PLACED ON FROZEN GROUND.

GENERAL MAINTENANCE OF EROSION CONTROL STRUCTURES:

- ALL EROSION CONTROL MEASURES SHALL BE INSPECTED WEEKLY AND WITHIN 24 HOURS OF ANY STORM EVENT OF 0.5 INCHES OR GREATER;
- ALL DAMAGED STRUCTURES SHALL BE REPAIRED IMMEDIATELY;
- ALL DEBRIS, OBSTRUCTIONS AND SEDIMENT SHALL BE REMOVED AS NEEDED TO MAINTAIN PROPER PERFORMANCE. SEDIMENT AND DEBRIS SHALL BE DISPOSED OF PROPERLY IN APPROVED LOCATIONS;
- ALL VEGETATION SHALL BE INSPECTED AND MAINTAINED AS DESIGNED. SEED AND FERTILIZER SHALL BE RE-APPLIED AS NEEDED;
- ALL EROSION CONTROL MEASURES SHALL BE REMOVED AFTER CONSTRUCTION IS COMPLETE AND INITIAL VEGETATIVE GROWTH IS ESTABLISHED.

EROSION AND SEDIMENTATION CONTROL DETAILS

HILLSDALE STREET
TAX MAP 113 - LOTS 22 THRU 27
ROCHESTER, NH
FOR
CITY OF ROCHESTER
SCHOOL DEPARTMENT
SCALE: 1" = 50' FEB. 2009

FILE NO. 263
PLAN NO. C-2483
DWG. NO. 08023/SP-2
F.B. NO.