

## FEATURES & SPECIFICATIONS

**CONSTRUCTION** — Weldable-grade, hot-rolled, commercial-quality carbon steel tubing with a minimum yield of 55,000 psi (11-gauge), or 50,000 psi (7-gauge). Uniform wall thickness of .125" or .188". Shaft is one-piece with a full-length longitudinal high-frequency electric resistance weld. Uniformly square in cross-section with flat sides, small corner radii and excellent torsional qualities. Available shaft widths are 4, 5 and 6 inches.

Anchor base is fabricated from hot-rolled carbon steel plate conforming to ASTM A36, that meets or exceeds a minimum-yield strength of 36,000 psi. Base plate and shaft are circumferentially welded top and bottom. Base cover is finished to match pole.

A handhole having nominal dimensions of 3" x 5" for all shafts. Included is a cover with attachment screws.

Top cap provided with all drill-mount poles.

Fasteners are high-strength galvanized, zinc-plated or stainless steel.

Finish: Must specify finish.

Grounding: Provision located immediately inside handhole rim. Grounding hardware is not included (provided by others).

Anchor Bolts: Top portion of anchor bolt is galvanized per ASTM A-153. Made of steel rod having a minimum yield strength of 55,000 psi.

Catalog Number	
Notes	Type

### Anchor Base Poles

# SSS

### SQUARE STRAIGHT STEEL



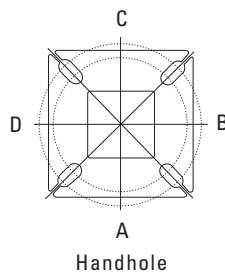
## ORDERING INFORMATION

Lead times will vary depending on options selected. Consult with your sales representative.

Example: SSS 20 5C DM19 DDB

Series	Nominal fixture mounting height	Nominal shaft base size/wall thickness	Mounting <sup>1</sup>	Options	Finish <sup>7</sup>
SSS	10 – 39 feet (see back page.)	(See back page.)	<b>Tenon mounting</b> PT Open top T20 2-3/8" O.D. (2" NPS) T25 2-7/8" O.D. (2-1/2" NPS) T30 3-1/2" O.D. (3" NPS) T35 4" O.D. (3-1/2" NPS)	<b>Shipped installed</b> L/AB Less anchor bolts VD Vibration damper TP Tamper proof H1-18Sxx Horizontal arm bracket (1 fixture) <sup>4,5</sup> FDLxx Festoon outlet less electrical <sup>4</sup>	<b>Standard colors</b> DDB Dark bronze DWH White DBL Black DMB Medium bronze DNA Natural aluminum GALV Galvanized finish
			<b>Drill mounting<sup>2</sup></b> DM19 1 at 90° DM28 2 at 180° DM28PL 2 at 180° with one side plugged DM29 2 at 90° DM39 3 at 90° DM49 4 at 90°	<b>CPL12xx 1/2" coupling<sup>4</sup></b> <b>CPL34xx 3/4" coupling<sup>4</sup></b> <b>CPL1xx 1" coupling<sup>4</sup></b> <b>NPL12xx 1/2" threaded nipple<sup>4</sup></b> <b>NPL34xx 3/4" threaded nipple<sup>4</sup></b> <b>NPL1xx 1" threaded nipple<sup>4</sup></b> <b>EHHxx Extra handhole<sup>4,6</sup></b>	<b>Classic colors</b> DSS Sandstone DGC Charcoal gray DTG Tennis green DBR Bright red DSB Steel blue
			<b>AERIS™/OMERO™ Drill mounting<sup>2</sup></b> DM19AS 1 at 90° DM28AS 2 at 180° DM29AS 2 at 90° DM39AS 3 at 90° DM49AS 4 at 90°		<b>Architectural colors</b> (powder finish) <sup>7</sup>
			<b>AERIS™ Suspend drill mounting<sup>2,3</sup></b> DM19AST_ 1 at 90° DM28AST_ 2 at 180° DM29AST_ 2 at 90° DM39AST_ 3 at 90° DM49AST_ 4 at 90°		
			<b>OMERO™ Suspend drill mounting<sup>2,3</sup></b> DM19MRT_ 1 at 90° DM28MRT_ 2 at 180° DM29MRT_ 2 at 90° DM39MRT_ 3 at 90° DM49MRT_ 4 at 90°		

## HANDHOLE ORIENTATION



### NOTES:

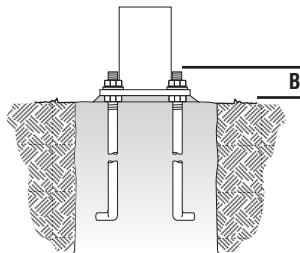
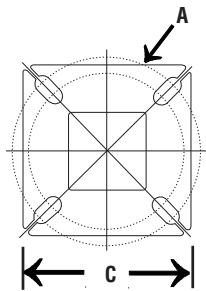
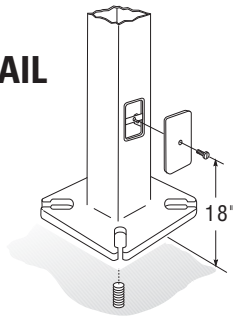
- When ordering tenon mounting and drill mounting for the same pole, follow this example: DM28/T20. The combination includes a required extra handhole.
- The drilling template to be used for a particular luminaire depends on the luminaire that is used. Refer to the Technical Data Section of the Outdoor Binder for Drilling Templates.
- Insert "1" or "2" to designate fixture size; e.g. DM19AST2.
- Specify location and orientation when ordering option.  
For 1st "x": Specify the height in feet above base of pole.  
Example: 5ft = 5 and 20ft = 20  
For 2nd "x": Specify orientation from handhole (A,B,C,D)  
Refer to the Handhole Orientation diagram above.
- Horizontal arm is 18" x 2-3/8" O.D. tenon standard.
- Combination of tenon-top and drill mount includes extra handhole.
- Additional colors available; see [www.lithonia.com/archcolors](http://www.lithonia.com/archcolors) or Architectural Colors brochure (Form No. 794.3). Powder finish standard.

# SSS Square Straight Steel Poles

## TECHNICAL INFORMATION

Catalog Number	Nominal shaft length (feet)	Pole Shaft Size (in x ft)	Wall Thickness (inches)	Gauge	EPA (ft²) with 1.3 gust						Bolt Circle (inches)	Bolt Size (in. x in. x in.)	Approximate ship weight (pounds)
					80 mph	Max. weight	90 mph	Max. weight	100 mph	Max. weight			
<b>SSS 10 4C</b>	10	4.0 x 10.0	0.125	11	30.6	765	23.8	595	18.9	473	8--9	3/4 x 18 x 3	75
<b>SSS 12 4C</b>	12	4.0 x 12.0	0.125	11	24.4	610	18.8	470	14.8	370	8--9	3/4 x 18 x 3	90
<b>SSS 14 4C</b>	14	4.0 x 14.0	0.125	11	19.9	498	15.1	378	11.7	293	8--9	3/4 x 18 x 3	100
<b>SSS 16 4C</b>	16	4.0 x 16.0	0.125	11	15.9	398	11.8	295	8.9	223	8--9	3/4 x 18 x 3	115
<b>SSS 18 4C</b>	18	4.0 x 18.0	0.125	11	12.6	315	9.2	230	6.7	168	8--9	3/4 x 18 x 3	125
<b>SSS 20 4C</b>	20	4.0 x 20.0	0.125	11	9.6	240	6.7	167	4.5	150	8--9	3/4 x 18 x 3	140
<b>SSS 20 4G</b>	20	4.0 x 20.0	0.188	7	14.0	350	11.0	275	8.0	200	8--9	3/4 x 30 x 3	198
<b>SSS 20 5C</b>	20	5.0 x 20.0	0.125	11	17.7	443	12.7	343	9.4	235	10--12	1 x 36 x 4	185
<b>SSS 20 5G</b>	20	5.0 x 20.0	0.188	7	28.1	703	21.4	535	16.2	405	10--12	1 x 36 x 4	265
<b>SSS 25 4C</b>	25	4.0 x 25.0	0.125	11	4.8	150	2.6	100	1.0	50	8--9	3/4 x 18 x 3	170
<b>SSS 25 4G</b>	25	4.0 x 25.0	0.188	7	10.8	270	7.7	188	5.4	135	8--9	3/4 x 30 x 3	245
<b>SSS 25 5C</b>	25	5.0 x 25.0	0.125	11	9.8	245	6.3	157	3.7	150	10--12	1 x 36 x 4	225
<b>SSS 25 5G</b>	25	5.0 x 25.0	0.188	7	18.5	463	13.3	333	9.5	238	10--12	1 x 36 x 4	360
<b>SSS 30 4G</b>	30	4.0 x 30.0	0.188	7	6.7	168	4.4	110	2.6	65	8--9	3/4 x 30 x 3	295
<b>SSS 30 5C</b>	30	5.0 x 30.0	0.125	11	4.7	150	2.0	50	--	--	10--12	1 x 36 x 4	265
<b>SSS 30 5G</b>	30	5.0 x 30.0	0.188	7	10.7	267	6.7	167	3.9	100	10--12	1 x 36 x 4	380
<b>SSS 30 6G</b>	30	6.0 x 30.0	0.188	7	19.0	475	13.2	330	9.0	225	11--13	1 x 36 x 4	520
<b>SSS 35 5G</b>	35	5.0 x 35.0	0.188	7	5.9	150	2.5	100	--	--	10--12	1 x 36 x 4	440
<b>SSS 35 6G</b>	35	6.0 x 35.0	0.188	7	12.4	310	7.6	190	4.2	105	11--13	1 x 36 x 4	540
<b>SSS 39 6G</b>	39	6.0 x 39.0	0.188	7	7.2	180	3.0	75	--	--	11--13	1 x 36 x 4	605

### BASE DETAIL



Pole Data							
Shaft base size	Bolt circle A	Bolt projection B	Base square	Template description	Anchor bolt description	Anchor bolt and template number	
4"C	8-1/2"	2-3/4"-4"	8"	ABTEMPLATE	PJ50004	AB18-0	ABSSS-4C
4"G	8-1/2"	2-3/4"-4"	8"	ABTEMPLATE	PJ50004	AB30-0	ABSSS-4G
5"	10"-12"	3-3/8"-4"	11"	ABTEMPLATE	PJ50010	AB36-0	ABSSS-5
6"	11"-13"	3-3/8"-4"	12-1/2"	ABTEMPLATE	PJ50011	AB36-0	N/A

#### IMPORTANT INSTALLATION NOTES:

- Do not erect poles without having fixtures installed.
- Factory-supplied templates must be used when setting anchor bolts. Lithonia Lighting will not accept claim for incorrect anchorage placement due to failure to use Lithonia Lighting factory templates.
- If poles are stored outside, all protective wrapping must be removed immediately upon delivery to prevent finish damage.
- Lithonia Lighting is not responsible for the foundation design.

#### IMPORTANT:

- These specifications are intended for general purposes only. Lithonia reserves the right to change material or design, without prior notice, in a continuing effort to upgrade its products.