

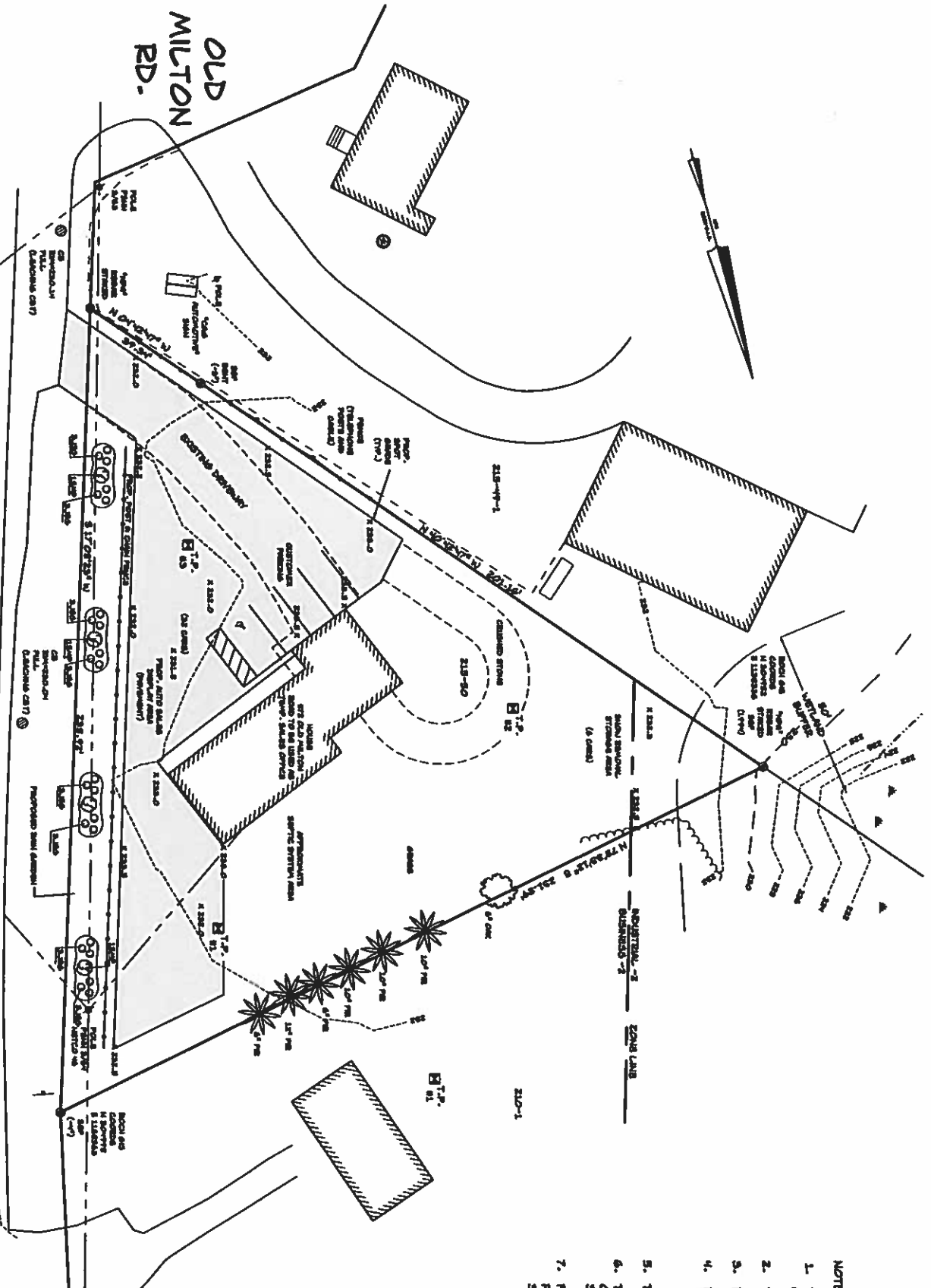
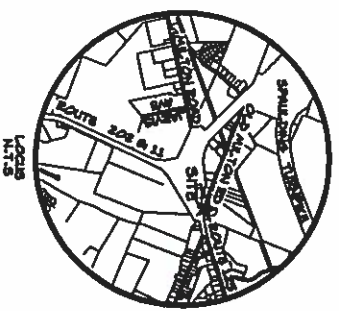


PLANT LIST			
KEY	BOTANICAL NAME	COMMON NAME	SIZE
PC	PERIS CALLESTIANA 'HISTOCENT'	ABSTRACT FLOWERING PLANT	2-3' CAL
SWP	SYMBIA MYRTILL 'PLASIN'	PLANTER PLANT	3-5' HT
JSS	JUNIPERUS CHINENSIS 'SAGGARDEN'	SEA GREEN JUNIPER	2-5' HT
			96
			4' SPREAD

TEST DATA (FROM CONCRETE 12/07/2012)

12-15	10' x 10' SAND & GRAVEL FILL	
12-16	10' x 10' SANDY LOAM	
12-17	10' x 10' SANDY LOAM	
12-18	10' x 10' SANDY LOAM	
12-19	10' x 10' SANDY LOAM	
12-20	10' x 10' SANDY LOAM	
12-21	10' x 10' SANDY LOAM	
12-22	10' x 10' SANDY LOAM	
12-23	10' x 10' SANDY LOAM	
12-24	10' x 10' SANDY LOAM	
12-25	10' x 10' SANDY LOAM	
12-26	10' x 10' SANDY LOAM	
12-27	10' x 10' SANDY LOAM	
12-28	10' x 10' SANDY LOAM	
12-29	10' x 10' SANDY LOAM	
12-30	10' x 10' SANDY LOAM	
12-31	10' x 10' SANDY LOAM	
12-32	10' x 10' SANDY LOAM	
12-33	10' x 10' SANDY LOAM	
12-34	10' x 10' SANDY LOAM	
12-35	10' x 10' SANDY LOAM	
12-36	10' x 10' SANDY LOAM	
12-37	10' x 10' SANDY LOAM	
12-38	10' x 10' SANDY LOAM	
12-39	10' x 10' SANDY LOAM	
12-40	10' x 10' SANDY LOAM	
12-41	10' x 10' SANDY LOAM	
12-42	10' x 10' SANDY LOAM	
12-43	10' x 10' SANDY LOAM	
12-44	10' x 10' SANDY LOAM	
12-45	10' x 10' SANDY LOAM	
12-46	10' x 10' SANDY LOAM	
12-47	10' x 10' SANDY LOAM	
12-48	10' x 10' SANDY LOAM	
12-49	10' x 10' SANDY LOAM	
12-50	10' x 10' SANDY LOAM	
12-51	10' x 10' SANDY LOAM	
12-52	10' x 10' SANDY LOAM	
12-53	10' x 10' SANDY LOAM	
12-54	10' x 10' SANDY LOAM	
12-55	10' x 10' SANDY LOAM	
12-56	10' x 10' SANDY LOAM	
12-57	10' x 10' SANDY LOAM	
12-58	10' x 10' SANDY LOAM	
12-59	10' x 10' SANDY LOAM	
12-60	10' x 10' SANDY LOAM	
12-61	10' x 10' SANDY LOAM	
12-62	10' x 10' SANDY LOAM	
12-63	10' x 10' SANDY LOAM	
12-64	10' x 10' SANDY LOAM	
12-65	10' x 10' SANDY LOAM	
12-66	10' x 10' SANDY LOAM	
12-67	10' x 10' SANDY LOAM	
12-68	10' x 10' SANDY LOAM	
12-69	10' x 10' SANDY LOAM	
12-70	10' x 10' SANDY LOAM	
12-71	10' x 10' SANDY LOAM	
12-72	10' x 10' SANDY LOAM	
12-73	10' x 10' SANDY LOAM	
12-74	10' x 10' SANDY LOAM	
12-75	10' x 10' SANDY LOAM	
12-76	10' x 10' SANDY LOAM	
12-77	10' x 10' SANDY LOAM	
12-78	10' x 10' SANDY LOAM	
12-79	10' x 10' SANDY LOAM	
12-80	10' x 10' SANDY LOAM	
12-81	10' x 10' SANDY LOAM	
12-82	10' x 10' SANDY LOAM	
12-83	10' x 10' SANDY LOAM	
12-84	10' x 10' SANDY LOAM	
12-85	10' x 10' SANDY LOAM	
12-86	10' x 10' SANDY LOAM	
12-87	10' x 10' SANDY LOAM	
12-88	10' x 10' SANDY LOAM	
12-89	10' x 10' SANDY LOAM	
12-90	10' x 10' SANDY LOAM	
12-91	10' x 10' SANDY LOAM	
12-92	10' x 10' SANDY LOAM	
12-93	10' x 10' SANDY LOAM	
12-94	10' x 10' SANDY LOAM	
12-95	10' x 10' SANDY LOAM	
12-96	10' x 10' SANDY LOAM	
12-97	10' x 10' SANDY LOAM	
12-98	10' x 10' SANDY LOAM	
12-99	10' x 10' SANDY LOAM	
12-100	10' x 10' SANDY LOAM	

ADDITIONS:	
215-49-1	666 AUTOMOTIVE LLC
215-49-2	127 DEY HILL RD., ROCHESTER, NH, 03867
215-49-3	SCED 3708/878
215-51	LANIER J & LINDA J. CLARK
215-52	22 BOWEN ST., ROCHESTER, NH, 03867
215-53	SCED 3478/782
215-54	STEVENS P. NICOLAS
215-55	65 MILTON RD., ROCHESTER, NH, 03866
215-56	SCED 1701/131
215-57	BLANCHARD C. GOSSELIN
215-58	56 PHILLIPS LN., ROCHESTER, NH, 03866
215-59	SCED 1678/365
215-60	MARTIN B. & BLANCHARD MALLON
215-61	P.O. BOX 815, ROCHESTER, NH, 03866
215-62	SCED 1058/677
215-63	CITY OF ROCHESTER
215-64	31 WAKEFIELD ST., ROCHESTER, NH 03867



Certified 9/19/13

NOTES:

1. THE PURPOSE OF THIS PLAN IS TO DEPICT AN AUTO SALES FACILITY AND CONVERTING THE EXISTING SHED-FAMILY HOME INTO A SALES OFFICE.
2. TOTAL PARCEL AREA: MAP 215, LOT 50 = 20,546 SF / 0.47 ACRES
3. PARCEL IS ZONED BUSINESS 2 (NON-RES. USE) & INDUSTRIAL 2
4. BUILDING SETBACKS:  
FR. = NONE, ST. = NONE, RT. = 25'  
FR. = NO BLDG., ST. = NONE, RT. = 25'
5. THE LOT IS SERVICED BY THE MUNICIPAL WATER AND AN ON SITE SEPTIC SYSTEM.
6. THE SUBJECT LOT IS NOT LOCATED WITHIN THE 100 YEAR FLOOD ZONE AS SHOWN ON THE FLOOD INSURANCE RATE MAP DATED MAY 11, 2005 COMMUNITY PANEL 3501702000 PANEL 205 OF 405.
7. FOR MORE INFORMATION ABOUT THIS SITE PLAN CONTACT THE ROCHESTER PLANNING DEPARTMENT, 31 WAKEFIELD STREET, ROCHESTER, NH 03867. (603) 336-1338.

REFERENCE PLANS:

1. "PLAN OF LAND, MANAGED & NOVA CORP, ROCHESTER, NEW HAMPSHIRE" DATED DEC. 20, 1997 BY G.L. DAVIS & ASSOCIATES  
RECORDED SCED 33-714-13
2. "SUBDIVISION OF LAND, OLD MILTON ROAD, ROCHESTER, NH FOR JOHN H. & SHEILA M. CANNON & HELEN B. CANNON" DATED SEPT. 1996 BY NORWAY PLAINS ASSOCIATES, INC.  
RECORDED SCED 48-87

RECEIVED

SEP 16 2013

Planning Dept.

TAX MAP 215-LOT 50  
OWNER OF RECORD:  
BLANCHETTE/HUBLEY REALTY, LLC  
26 CALLEF HIGHWAY, ROUTE 125,  
ROCHESTER, NH 03839  
SCED 3979/208

PROPOSED SITE PLAN  
72 OLD MILTON RD.  
TAX MAP 215, LOT 50  
ROCHESTER, NH

PREPARED FOR:

FAIRWAY AUTO

1"=20' NOV. 2012

GRAPHIC SCALE



9/12/13 PREPARED FOR FAIRWAY AUTO  
9/12/13 PLAN CHECKED: 9/12/13