




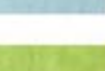




LEGEND	
	SINGLE FAMILY LOT
	TOWNHOUSE LOT
	NEW LOT
	CIVIC LOT
	EASEMENT
	WETLAND
	PARK
	LOT LINE ADJUSTMENT

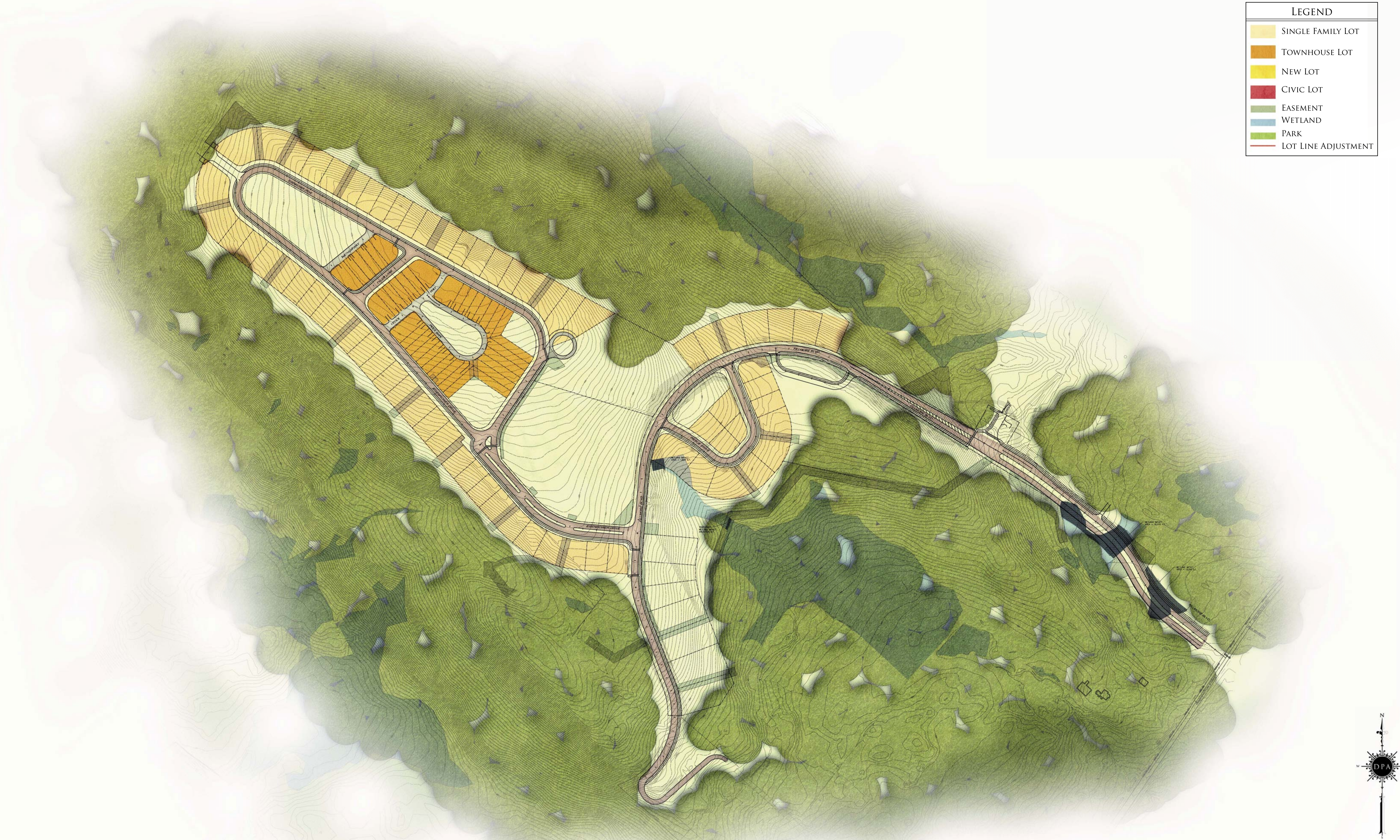


# HIGHFIELD COMMONS

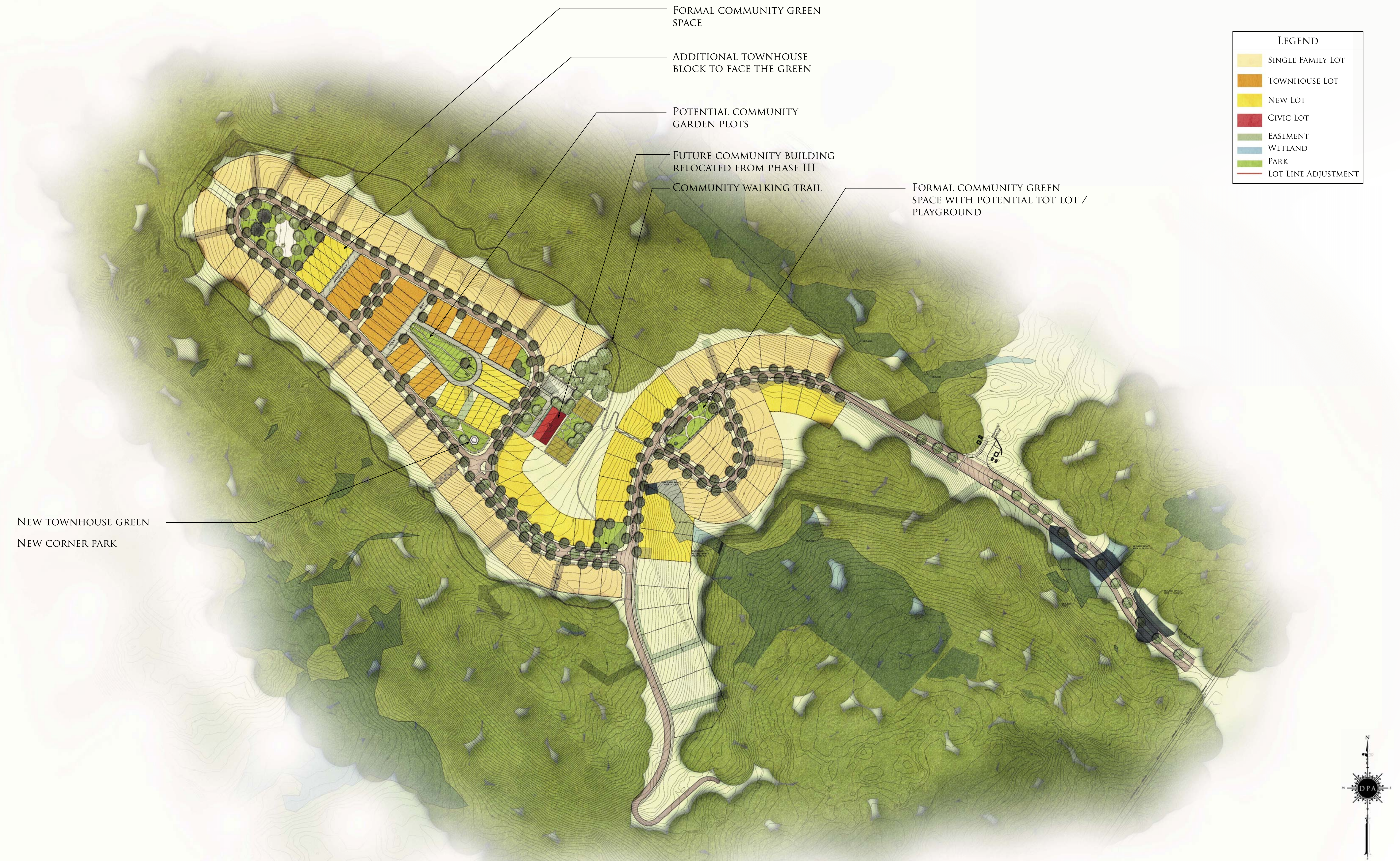
EXISTING APPROVED PLAN PHASE I

MASTERPLAN  
SCALE: 1" = 150'-0"

JUNE 01, 2010

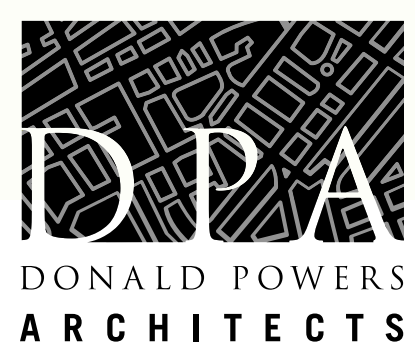






LEGEND	
	SINGLE FAMILY LOT
	TOWNHOUSE LOT
	NEW LOT
	CIVIC LOT
	EASEMENT
	WETLAND
	PARK
	LOT LINE ADJUSTMENT

NEW TOWNHOUSE GREEN  
NEW CORNER PARK



# HIGHFIELD COMMONS

## PROPOSED REGULATING PLAN PHASE I

MASTERPLAN  
SCALE: 1" = 150'-0"

JUNE 01, 2010



COMMUNITY GREEN SPACE

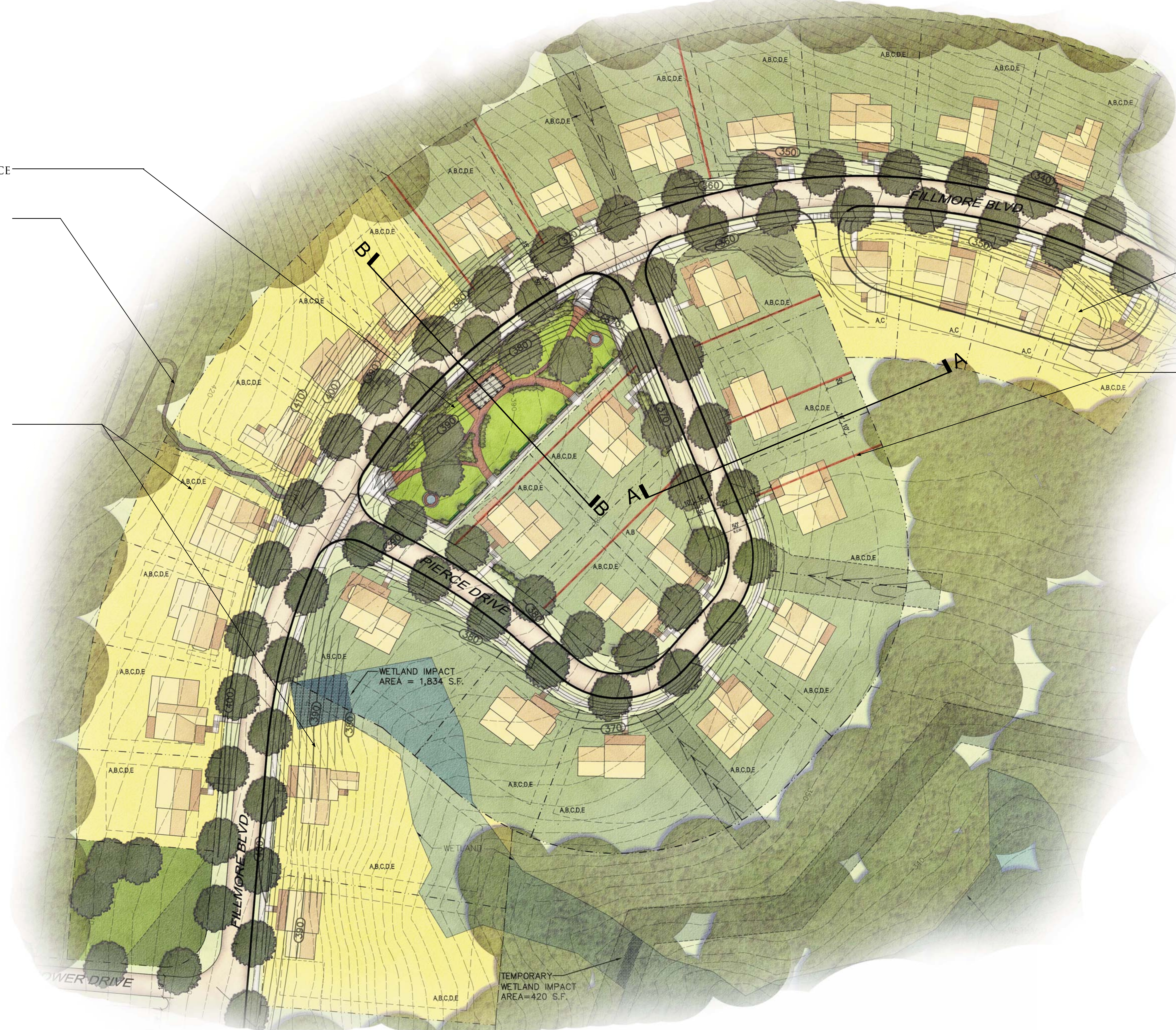
WALKING TRAIL

NEW LOTS TO CONTINUE  
STREETSCAPE

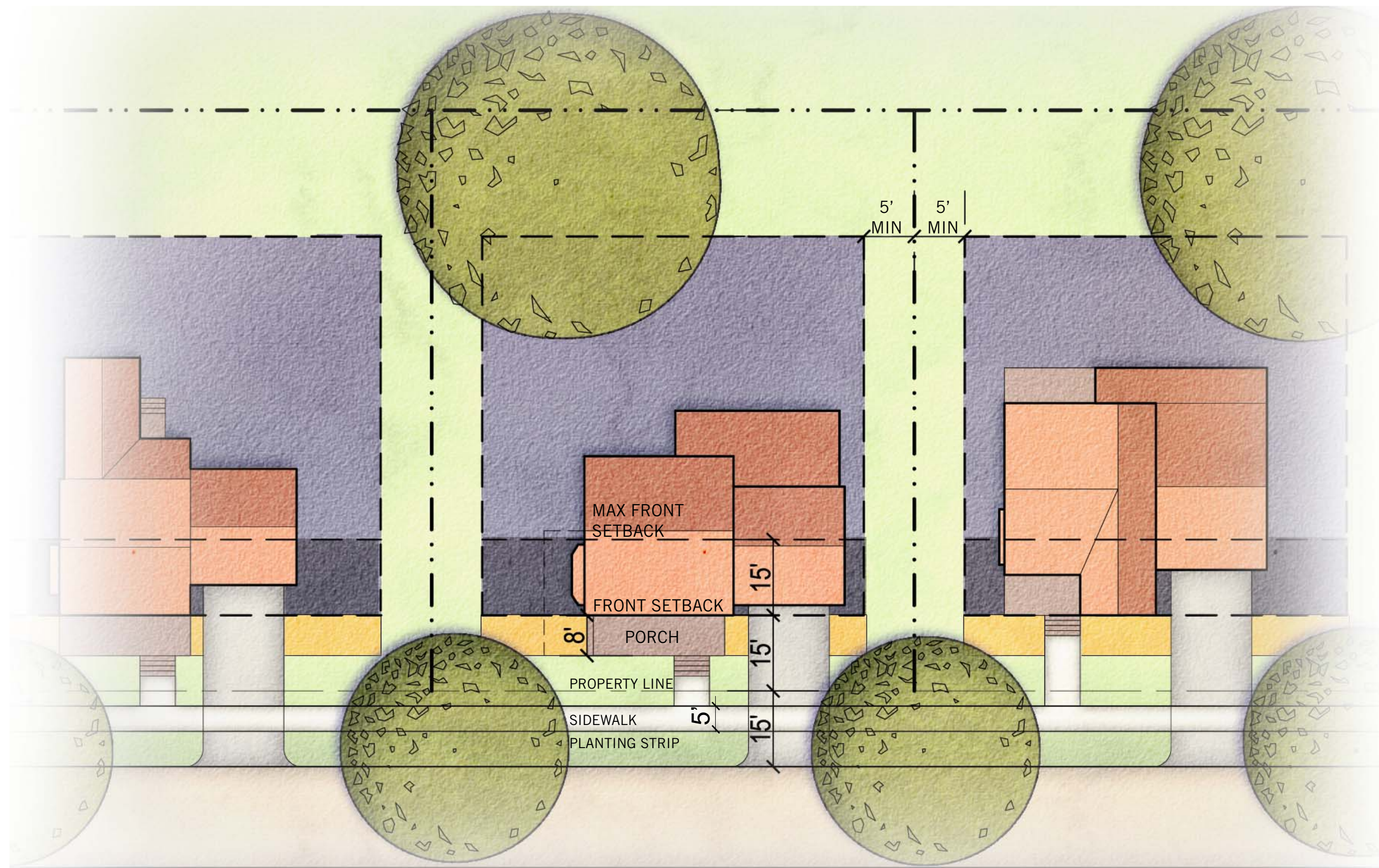
NEW LOTS ALIGNED WITH ROAD

PREVIOUS LOT LINE LOCATION

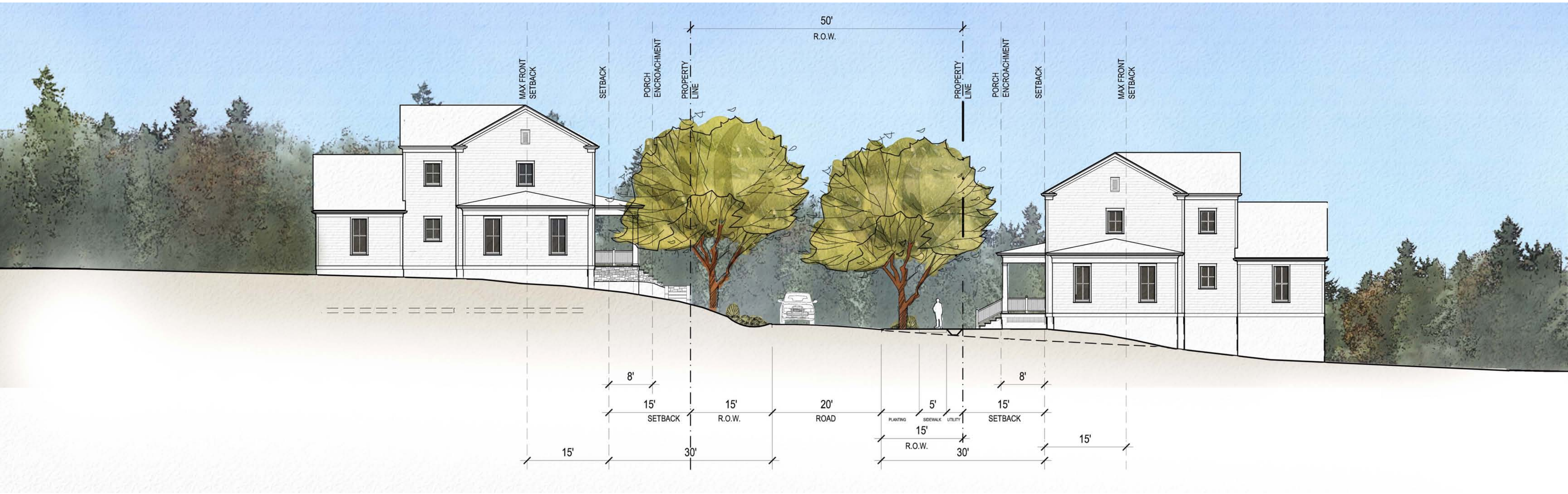
LEGEND	
	SINGLE FAMILY LOT
	TOWNHOUSE LOT
	NEW LOT
	CIVIC LOT
	EASEMENT
	WETLAND
	PARK
	LOT LINE ADJUSTMENT





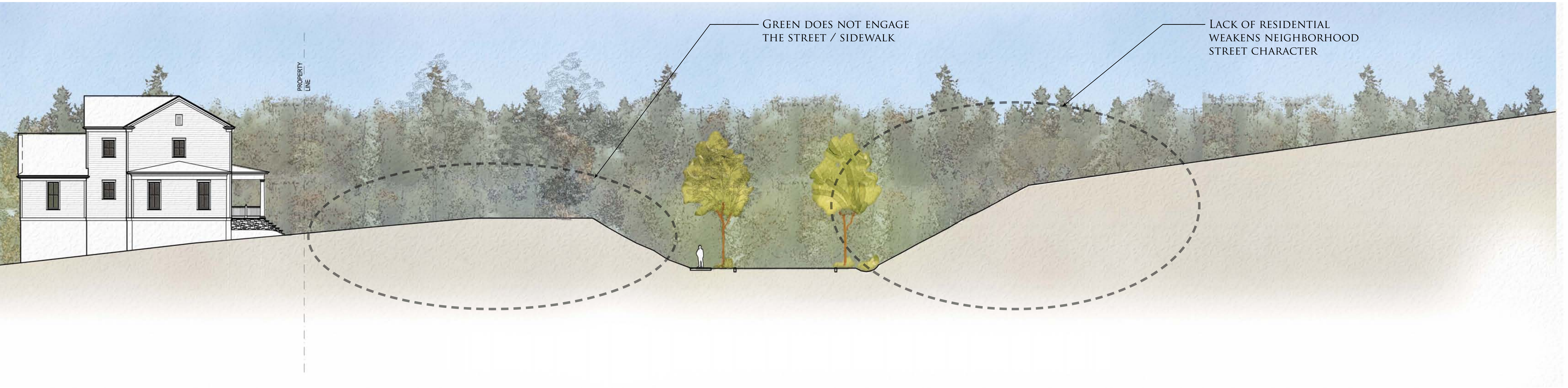


TYPICAL LOT PLAN WITH PROPOSED SETBACKS  
SCALE: 1" = 20'-0"

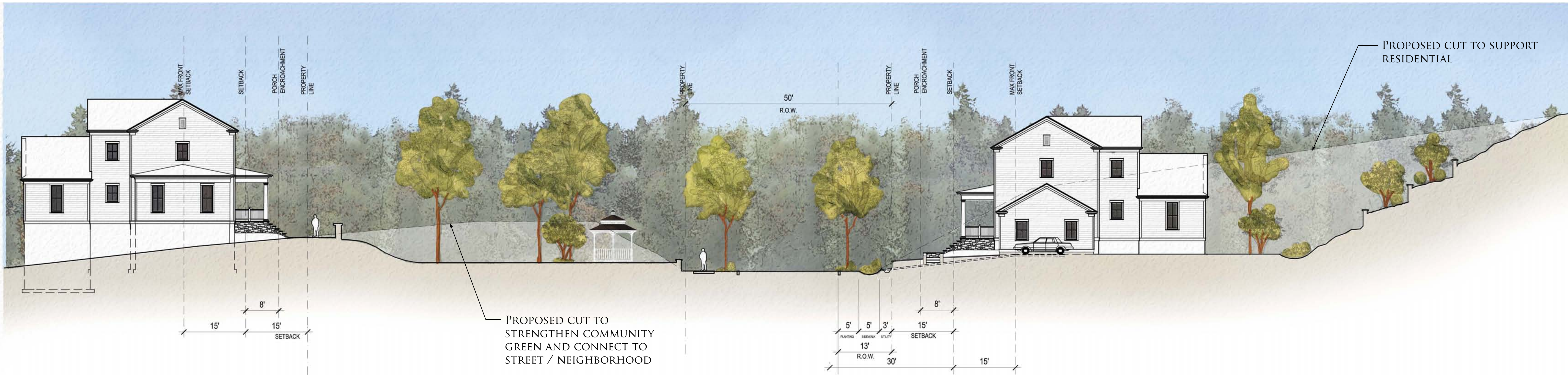


PROPOSED SECTION A THROUGH PIERCE ROAD  
SCALE: 1/8" = 1'-0"





EXISTING SECTION B THROUGH FILLMORE BLVD AND PARK  
SCALE: 3/32" = 1'-0"



PROPOSED SECTION B THROUGH FILLMORE BLVD AND PARK  
SCALE: 3/32" = 1'-0"