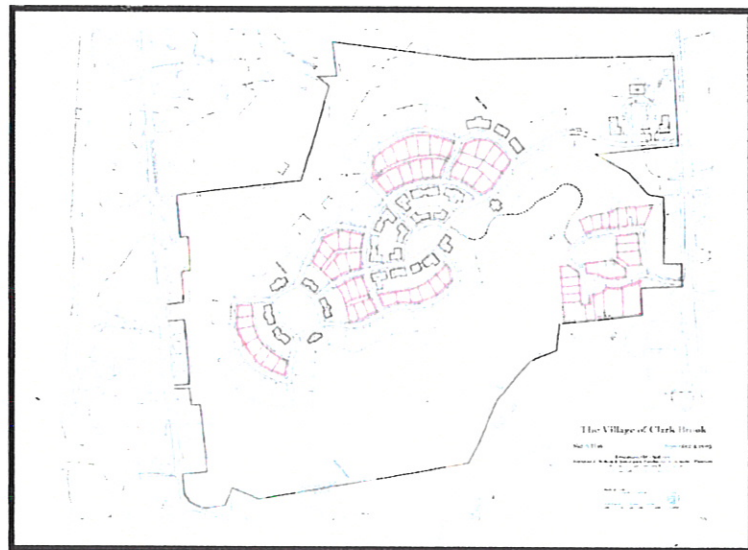


VILLAGE NEIGHBORHOOD

The Village Neighborhood is primarily a residential area. In-home professional offices that do not require substantial walk-in will be allowed.

The ranges of building types allowed in the Village Neighborhood are small apartment, townhouse, cottage and larger single-family home. Homes will be set back no more than twenty feet from the property line with front porches. Parking is provided on the street and through alleyways to garages or parking courts.

Recreation is encouraged through a series of walking paths connecting the different parts of the Village.



The Village of Clark Brook

Rochester, New Hampshire

R. Commons, LLC

Sheet 5