



B.H. KEITH ASSOCIATES

11 Elm Street
Post Office Box 326
Freedom, New Hampshire 03836
Tel. (603) 539-8343
Fax (603) 539-2532

July 11, 2011

Mr. Michael Behrendt, AICP
Chief Planner
City of Rochester
31 Wakefield Street
Rochester, New Hampshire 03867

***RE: Trail Re-Location Project, Waste Management of New Hampshire, Inc.,
Rochester, N.H.***

Dear Mr. Behrendt:

On behalf of Waste Management of New Hampshire, Inc. (WMNH), please find our NHDES Recreational Trail Wetland Notification form, accompanying plans and filing fee for the development of a new section of recreational trail within the Mount Isinglass Recreational Area located (Figure 1: Locus Plan) off of Rochester Neck Road in Rochester, New Hampshire.

The Gonic Trail System (Figure 2: Overall Site Plan) is a series of trails within the Mount Isinglass Recreational Area designed to provide educational and recreational opportunities for the public. The trail network offers a self-guided tour through the forest management area and along the Isinglass River. The trails may be used for recreational activities such as hiking, biking, jogging, skiing, and snowshoeing. The trails also provide access to the river for fishing and swimming.

The project entails establishing approximately 960 linear feet of new trail which will follow parallel to the river from Isinglass Park to its juncture with the existing trail. Once established, WMNH intends to discontinue approximately 1,040 linear feet of existing trail (Figure 3: Existing Site Conditions Plan) which traverses through floodplain forested wetlands and steep slopes.

As planned, the new trail will eliminate impacts to the wetland by installing a foot bridge (Figure 4: Footbridge Detail) crossing the wetland at its narrowest point. Additionally, the trail will reduce the need to traverse steep potentially erosion prone slopes while creating an aesthetically pleasing trail providing an enhanced visual buffer between the trail and the nearby facility.

Trail Re-Location Project
Waste Management of New Hampshire, Inc.
Rochester Neck Road
Rochester, New Hampshire

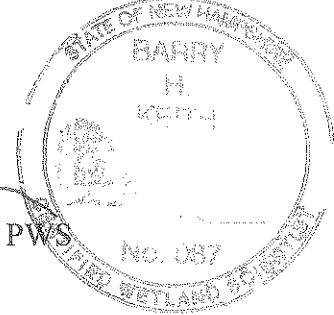
page two.

I hope this information proves sufficient for your review. Please feel free to contact me should you have any questions or comment.

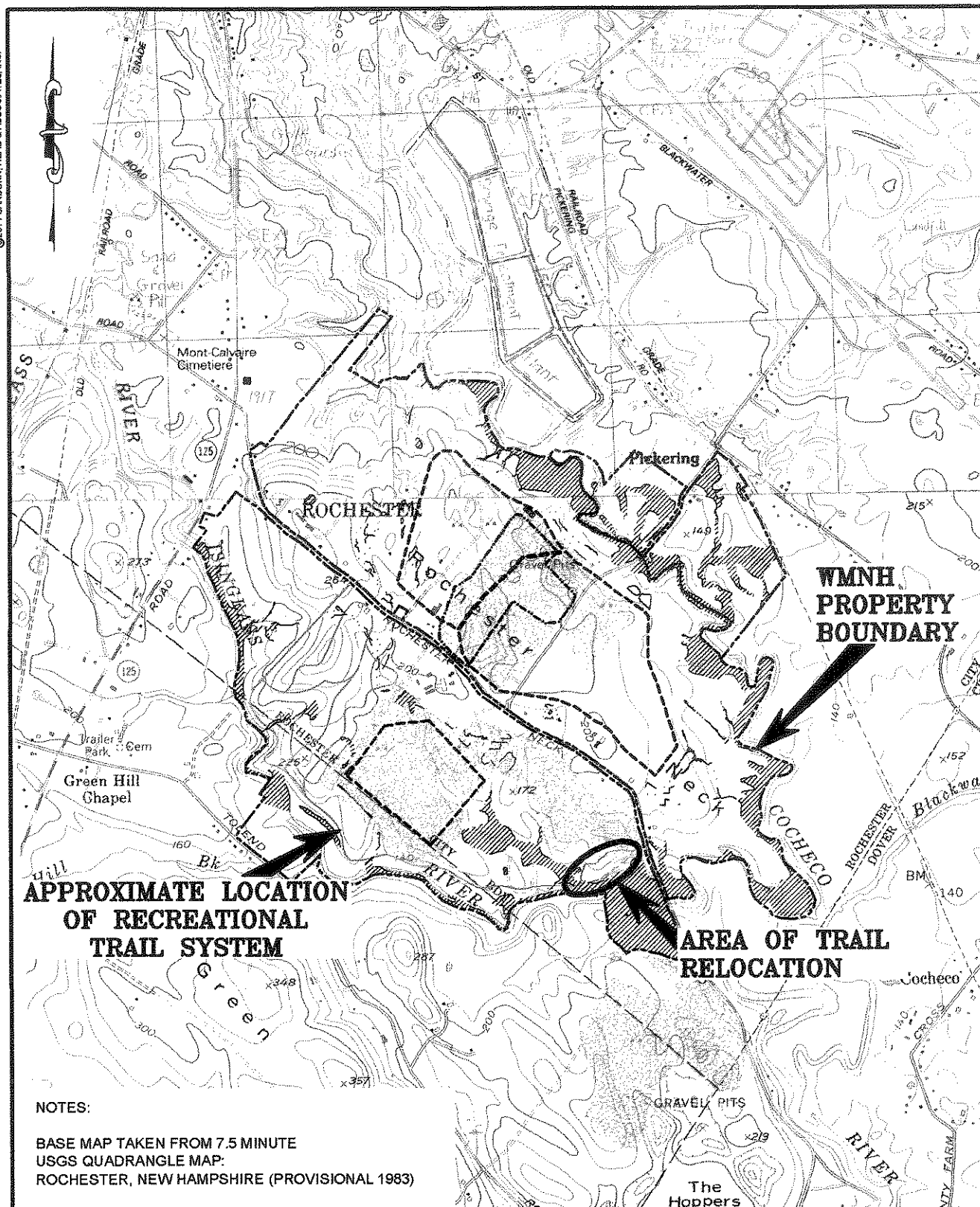
Very truly yours,



Barry H. Keith, CWS, PWS



CC: Anne Reichert, P.E., Waste Management of N.H., Inc.
Kelly Anderson, P.E., Sanborn, Head & Associates, Inc.



WASTE MANAGEMENT OF NEW HAMPSHIRE
ROCHESTER, NEW HAMPSHIRE

TRAIL RELOCATION PROJECT
LOCUS PLAN

SANBORN |||| HEAD

SCALE: 1"=2,000'

DRAWN BY: DJD

FILE NO. 3288.00

DATE: JULY 2011

CHECKED BY: KMA

FIGURE NO. 1

**TRAIL RELOCATION PROJECT
WASTE MANAGEMENT OF N.H., INC.
ROCHESTER, NEW HAMPSHIRE**



**PHOTO #1: ISINGLASS RIVER PARK TRAIL HEAD PARKING
AREA.**



**PHOTO #2: WELL WORN EXISTING TRAIL AT TOP OF SLOPE
ADJACENT TO THE FACILITY.**

**TRAIL RELOCATION PROJECT
WASTE MANAGEMENT OF N.H., INC.
ROCHESTER, NEW HAMPSHIRE**



**PHOTO #3: EXISTING TRAIL THRU WETLANDS, TO BE
DISCONTINUED.**



PHOTO #4: EXISTING TRAIL THRU FLOODPLAIN WETLANDS.

**TRAIL RELOCATION PROJECT
WASTE MANAGEMENT OF N.H., INC.
ROCHESTER, NEW HAMPSHIRE**



**PHOTO #5: PROPOSED NEW TRAIL INTERSECTION WITH
EXISTING TRAIL.**



PHOTO #6: TRAIL THRU FLOODPLAIN FOREST.

**TRAIL RELOCATION PROJECT
WASTE MANAGEMENT OF N.H., INC.
ROCHESTER, NEW HAMPSHIRE**



PHOTO #7: NEW TRAIL RE-LOCATION.

**TRAIL RELOCATION PROJECT
WASTE MANAGEMENT OF N.H., INC.
ROCHESTER, NEW HAMPSHIRE**



PHOTO #8: PROPOSED FOOTBRIDGE CROSSING.



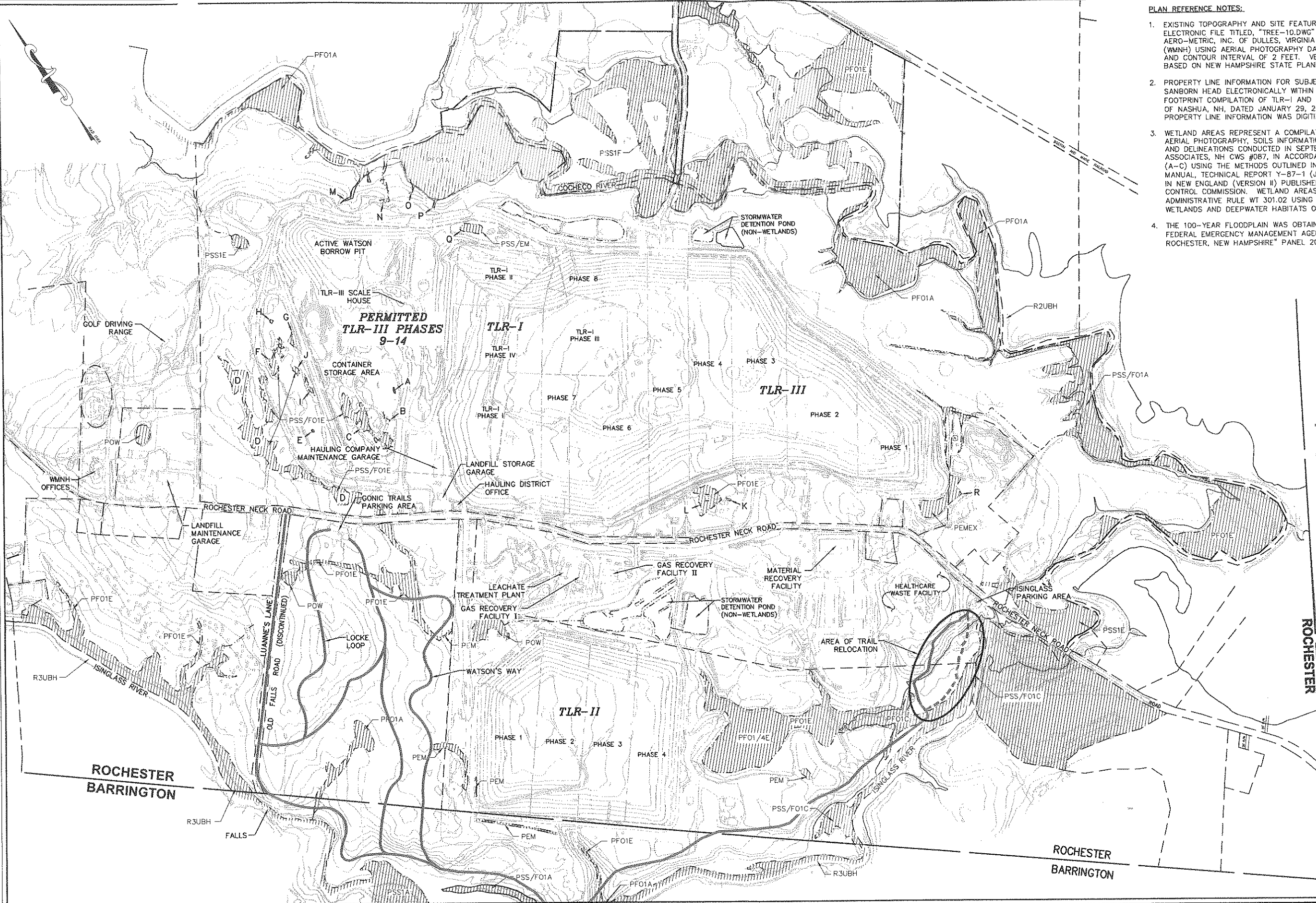
PHOTO #9: PROPOSED FOOTBRIDGE CROSSING.

**TRAIL RELOCATION PROJECT
WASTE MANAGEMENT OF N.H., INC.
ROCHESTER, NEW HAMPSHIRE**




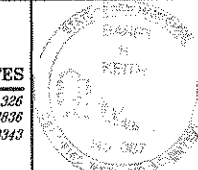
**PHOTO #10: NEW TRAIL ENTRANCE FROM ISINGLASS RIVER
PARK TRAIL HEAD PARKING AREA.**

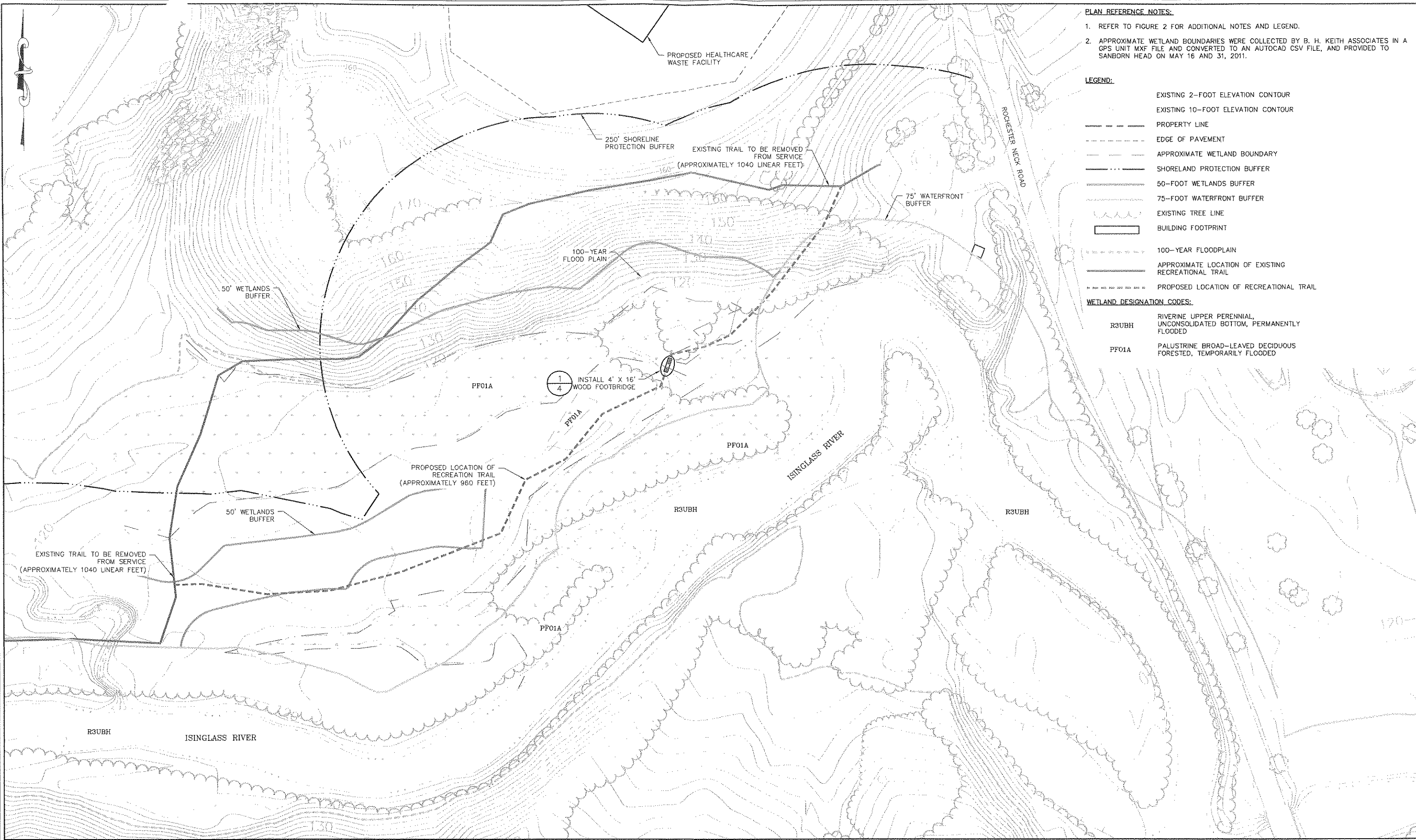
© 2011 SANBORN HEAD & ASSOCIATES, INC.
WASTE: C:\Users\james\Documents\Trail Relocation\Map\Map2011-08-04.dwg
XREFS: C:\Users\james\Documents\Trail Relocation\Map\Map2011-08-04.dwg
DATE: 8/4/2011 10:00:00 AM
PLOT DATE: 8/4/2011 10:00:00 AM



- PLAN REFERENCE NOTES:**
- EXISTING TOPOGRAPHY AND SITE FEATURES WERE PROVIDED TO SANBORN HEAD IN AN ELECTRONIC FILE TITLED, "TREE-10.DWG" COMPILED USING PHOTOGRAMMETRIC METHODS BY AERO-METRIC, INC. OF DULLES, VIRGINIA FOR WASTE MANAGEMENT OF NEW HAMPSHIRE, INC. (WMNH) USING AERIAL PHOTOGRAPHY DATED APRIL 14, 2010. ORIGINAL SCALE OF 1" = 100' AND CONTOUR INTERVAL OF 2 FEET. VERTICAL DATUM IS BASED ON NGVD 1929. GRID IS BASED ON NEW HAMPSHIRE STATE PLANE COORDINATE SYSTEM NAD 1983.
 - PROPERTY LINE INFORMATION FOR SUBJECT PARCEL (MAP 262 LOT 23) WAS PROVIDED TO SANBORN HEAD ELECTRONICALLY WITHIN A PLAN TITLED "BOUNDARY COMPILATION AND FOOTPRINT COMPILATION OF TLR-I AND TLR-III" PREPARED FOR WMNH BY CHAS. H. SELLS OF NASHUA, NH, DATED JANUARY 29, 2002 AT A SCALE OF 1" = 300'. ALL OTHER PROPERTY LINE INFORMATION WAS DIGITIZED FROM TAX MAPS.
 - WETLAND AREAS REPRESENT A COMPILATION OF INFORMATION DETERMINED USING EXISTING AERIAL PHOTOGRAPHY, SOILS INFORMATION, U.S.F.W.S. NATIONAL WETLAND INVENTORY MAPS AND DELINEATIONS CONDUCTED IN SEPTEMBER AND OCTOBER OF 2000 BY BARRY H. KEITH ASSOCIATES, NH CWS #087, IN ACCORDANCE WITH NHWB ADMINISTRATIVE RULE WT 301.01 (A-C) USING THE METHODS OUTLINED IN THE CORPS OF ENGINEERS WETLAND DELINEATION MANUAL, TECHNICAL REPORT Y-87-1 (JANUARY 1987), AND FIELD IDENTIFYING HYDRIC SOILS IN NEW ENGLAND (VERSION II) PUBLISHED BY THE N.E. INTERSTATE WATER POLLUTION CONTROL COMMISSION. WETLAND AREAS WERE CLASSIFIED IN ACCORDANCE WITH NHWB ADMINISTRATIVE RULE WT 301.02 USING THE USFWS/OBS-79/31 MANUAL CLASSIFICATION OF WETLANDS AND DEEPWATER HABITATS OF THE UNITED STATES (COWARDIN ET AL, 1979).
 - THE 100-YEAR FLOODPLAIN WAS OBTAINED BASED ON INFORMATION PROVIDED ON THE FEDERAL EMERGENCY MANAGEMENT AGENCY (FEMA) "FLOOD INSURANCE RATE MAP, CITY OF ROCHESTER, NEW HAMPSHIRE" PANEL 20 OF 20, EFFECTIVE DATE SEPTEMBER 16, 1982.

- LEGEND:**
- 10-FOOT ELEVATION CONTOUR
 - PROPERTY LINE
 - LIMIT OF WASTE CONTAINMENT
 - FACILITY PHASE LIMIT
 - DELINEATED WETLAND
 - TREE LINE
 - WETLAND AREA
 - 100-YR FLOODPLAIN
 - APPROXIMATE LOCATION OF RECREATIONAL TRAIL
 - PROPOSED LOCATION OF RECREATIONAL TRAIL

SANBORN HEAD B. H. KEITH ASSOCIATES POST OFFICE BOX 326 FREEDOM, NEW HAMPSHIRE 03636 (603) 539-8343			<p>GRAPHICAL SCALE</p> <p>400' 200' 0' 400' 800'</p>	DRAWN BY: D. DOMBROWSKY DESIGNED BY: K. ANDERSON REVIEWED BY: R. SHILLABER PROJECT MGR: K. ANDERSON PIC: R. SHILLABER DATE: JULY 2011	TRAIL RELOCATION PROJECT WASTE MANAGEMENT OF NEW HAMPSHIRE ROCHESTER, NEW HAMPSHIRE	PROJECT NUMBER: 3288.00
				OVERALL SITE PLAN	FIGURE NUMBER: 2	



PLAN REFERENCE NOTES:

1. REFER TO FIGURE 2 FOR ADDITIONAL NOTES AND LEGEND.
2. APPROXIMATE WETLAND BOUNDARIES WERE COLLECTED BY B. H. KEITH ASSOCIATES IN A GPS UNIT MXF FILE AND CONVERTED TO AN AUTOCAD CSV FILE, AND PROVIDED TO SANBORN HEAD ON MAY 16 AND 31, 2011.

LEGEND:

- EXISTING 2-FOOT ELEVATION CONTOUR
- EXISTING 10-FOOT ELEVATION CONTOUR
- PROPERTY LINE
- EDGE OF PAVEMENT
- APPROXIMATE WETLAND BOUNDARY
- SHORELAND PROTECTION BUFFER
- 50-FOOT WETLANDS BUFFER
- 75-FOOT WATERFRONT BUFFER
- EXISTING TREE LINE
- BUILDING FOOTPRINT
- 100-YEAR FLOODPLAIN
- APPROXIMATE LOCATION OF EXISTING RECREATIONAL TRAIL
- PROPOSED LOCATION OF RECREATIONAL TRAIL

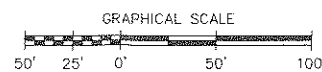
WETLAND DESIGNATION CODES:

- R3UBH RIVERINE UPPER PERENNIAL, UNCONSOLIDATED BOTTOM, PERMANENTLY FLOODED
- PF01A PALUSTRINE BROAD-LEAVED DECIDUOUS FORESTED, TEMPORARILY FLOODED

SANBORN HEAD



B. H. KEITH ASSOCIATES
POST OFFICE BOX 326
FREEDOM, NEW HAMPSHIRE 03836
(603) 539-8343



NO.	DATE	DESCRIPTION	BY

DRAWN BY: D. DOMBROWSKY
DESIGNED BY: K. ANDERSON
REVIEWED BY: R. SHILLABER
PROJECT MGR: K. ANDERSON
PIC: R. SHILLABER
DATE: JULY 2011

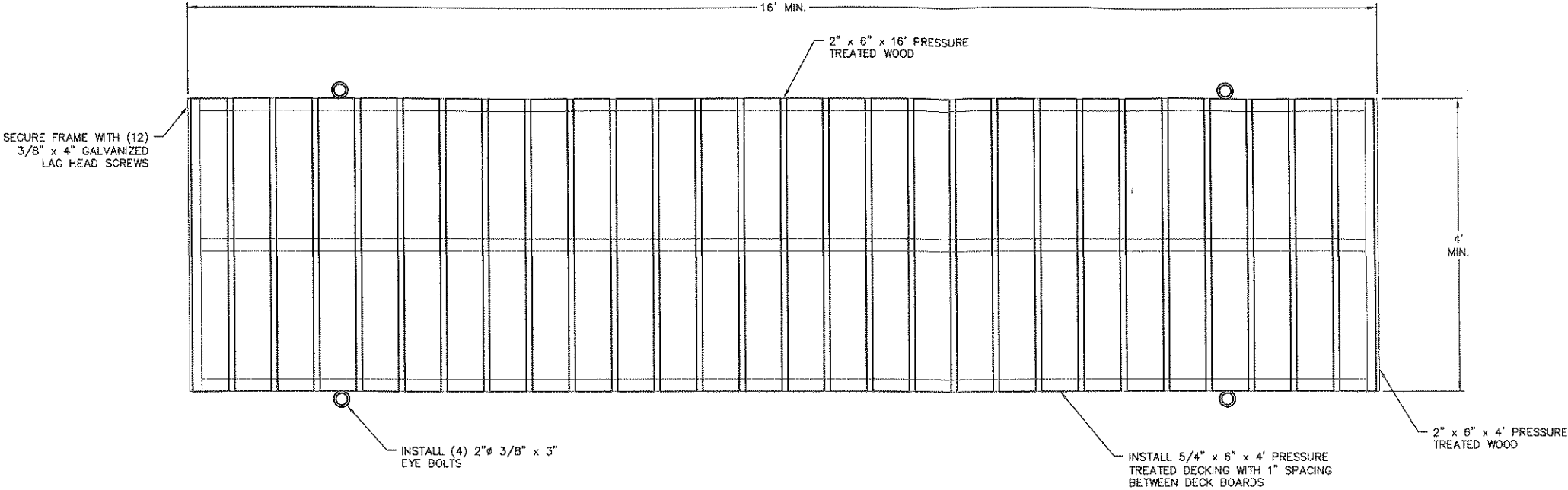
TRAIL RELOCATION PROJECT
WASTE MANAGEMENT OF NEW HAMPSHIRE
ROCHESTER, NEW HAMPSHIRE

EXISTING SITE CONDITIONS PLAN

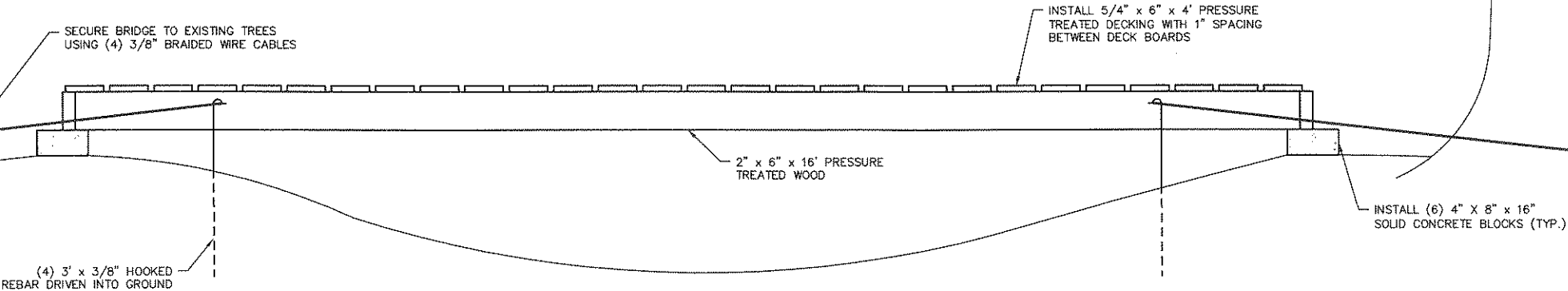
PROJECT NUMBER:
3288.00

FIGURE NUMBER:
3

© 2011 SANBORN HEAD & ASSOCIATES, INC.
MADES: C:\Users\jwh\My Documents\Drawings\Trail\Trail.dwg
DATE: 6/20/2011 1:20:22 PM
LAYOUT: 1
PLOT DATE: 6/20/2011 1:20:22 PM
PLOT BY: jwh



PLAN VIEW



ELEVATION

1 FOOTBRIDGE DETAIL

NOT TO SCALE

- TRAIL RE-LOCATION CONSTRUCTION SEQUENCE
1. COORDINATE WITH WMNH MAINTENANCE SUPERVISOR PRIOR TO CONSTRUCTION.
 2. RE-FLAG TRAIL CORRIDOR AND LIMITS OF TRAIL WIDTH, IF NECESSARY.
 3. USING MANUAL EQUIPMENT (EG. CHAINSAW, BRUSHSAW, AXE, ETC.) CLEAR TRAIL CORRIDOR. CORRIDOR SHALL BE NO MORE THAN 6 FEET IN WIDTH.
 4. WHERE NECESSARY, SMALL TREES AND SHRUBS (NO MORE THAN 6" DBH) SHALL BE CUT FLUSH TO THE GROUND LEAVING STUMPS AND ROOT STRUCTURES IN PLACE.
 5. BRUSH AND TREE BRANCHES SHALL BE LOPPED TO WITHIN 1.5 FEET OF THE GROUND AND TRANSPORTED TO WITHIN 20 FEET OF EITHER SIDE OF THE TRAIL.
 6. INSTALL 4'X16' WOODEN WALKWAY OVER WETLAND CROSSING, PER PLAN.
 7. BLAZE AND PAINT TRAIL ALIGNMENT.
 8. INSTALL TRAIL MARKERS AT TRAIL INTERSECTIONS AND PERIODICALLY, AS NEEDED THROUGHOUT THE TRAIL NETWORK. TRAIL MARKERS SHOULD BE NAILED ON EITHER SIDE OF KEY BLAZED TREES USING 2" ALUMINUM OR GALVANIZED STEEL NAILS. NAILS SHOULD NOT BE INSTALLED FLUSH AGAINST THE TREE IN ORDER TO ALLOW FOR FUTURE TREE GROWTH.
 9. BLOCK EITHER END OF EXISTING TRAIL, TO BE ABANDONED, WITH EXISTING LOGS AND COARSE WOODY DEBRIS.
 10. INSTALL SIGNAGE INDICATING THE EXISTING TRAIL CLOSURE AND RE-ROUTED TRAIL LOCATION.

SANBORN HEAD

B. H. KEITH ASSOCIATES
POST OFFICE BOX 326
FREEDOM, NEW HAMPSHIRE 03636
(603) 539-8343



GRAPHICAL SCALE AS NOTED

NO.	DATE	DESCRIPTION	BY

DRAWN BY: D. DOMBROWSKY
DESIGNED BY: K. ANDERSON
REVIEWED BY: R. SHILLABER
PROJECT MGR: K. ANDERSON
PIC: R. SHILLABER
DATE: JULY 2011

TRAIL RELOCATION PROJECT
WASTE MANAGEMENT OF NEW HAMPSHIRE
ROCHESTER, NEW HAMPSHIRE

NOTES & DETAILS

PROJECT NUMBER:
3288.00
FIGURE NUMBER:
4