

City of Rochester New Hampshire



Natural Resources Master Plan Chapter 2008

Topography

Legend

Political Features

- Municipal Boundary
- 2006 Tax Parcels

GRANIT Conservation Land

- Existing Conservation Land

Surface Water Features

- Lake, Pond, Reservoir
- Wetlands
- River, Stream, Brook

Transportation Features

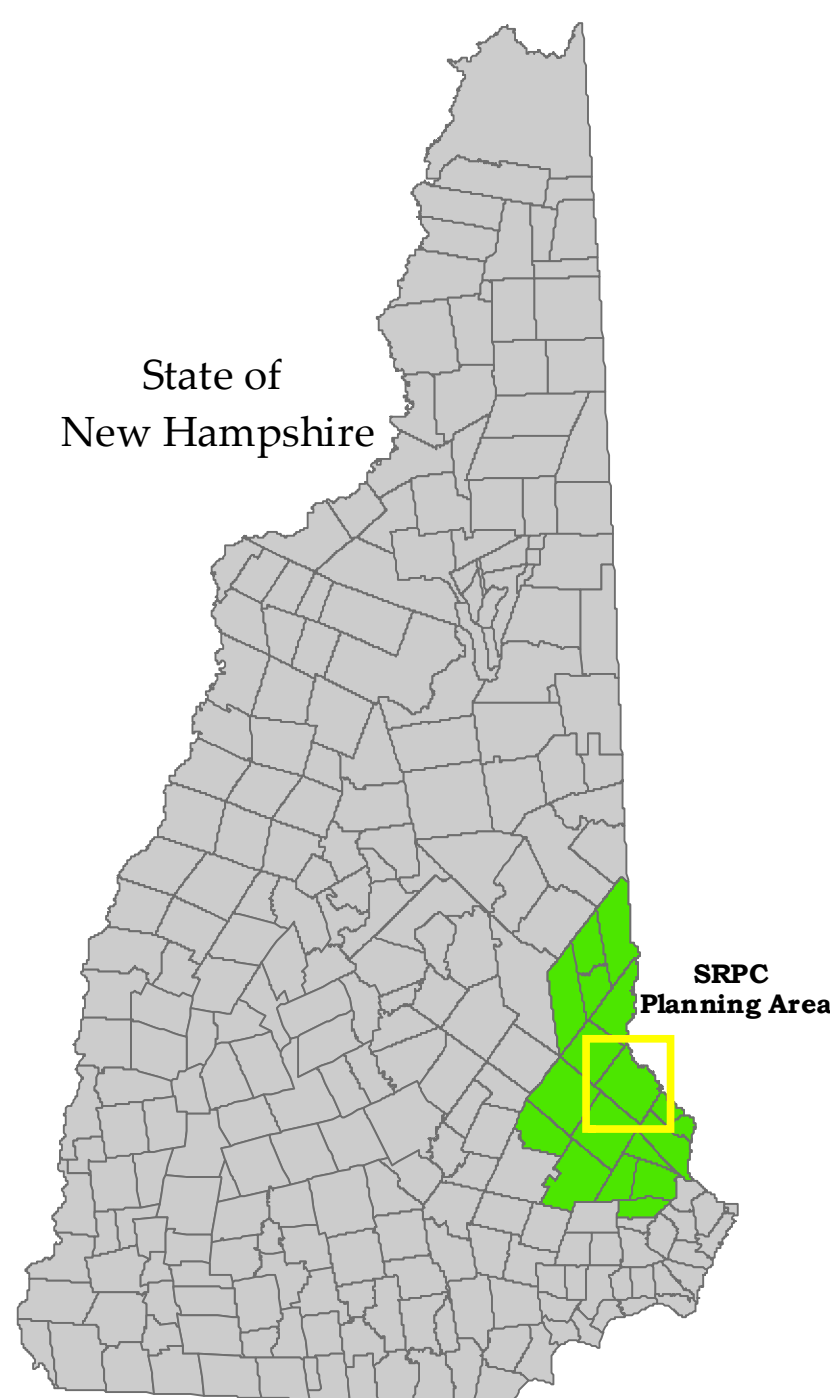
Road Type

- State
- Federal
- Local
- Not Maintained
- Private
- Rail Road

USGS Digital Elevation Model

Percent Slope

- 0 - 4.9%
- 5 - 9.9%
- 10 - 14.9%
- 15 - 24.9%
- >25%



This project was funded under the Coastal Zone Management Act by NOAA's Office of Ocean and Coastal Resource Management in conjunction with the New Hampshire Coastal Program.

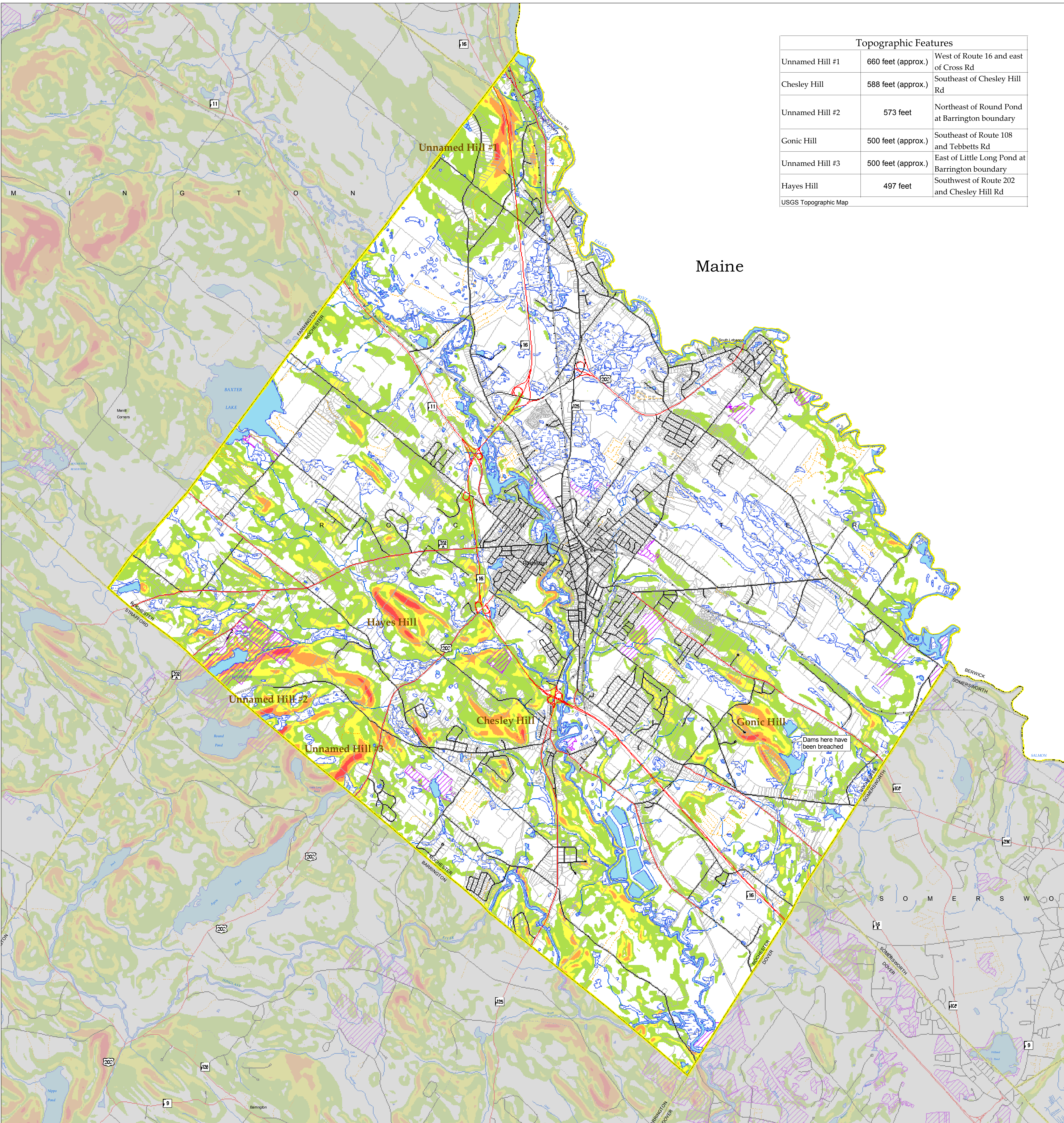
This project was also funded in part by a grant from the New Hampshire Estuaries Project as authorized by the U.S. Environmental Protection Agency's National Estuary Program.

In addition, funding for this project was also provided by the City of Rochester Conservation Commission.



Topographic Features		
Unnamed Hill #1	660 feet (approx.)	West of Route 16 and east of Cross Rd
Chesley Hill	588 feet (approx.)	Southeast of Chesley Hill Rd
Unnamed Hill #2	573 feet	Northeast of Round Pond at Barrington boundary
Gonic Hill	500 feet (approx.)	Southeast of Route 108 and Tebbetts Rd
Unnamed Hill #3	500 feet (approx.)	East of Little Long Pond at Barrington boundary
Hayes Hill	497 feet	Southwest of Route 202 and Chesley Hill Rd
USGS Topographic Map		

Maine



Map Created by the Strafford Regional Planning Commission
2 Ridge St, Suite 4, Dover, NH 03820
P: 603.333.2525 F: 603.333.2586 E: info@srpc.com
Website: www.srpc.com
Source: Various Natural Resources Master Plan Chapter
Topography
Copyright: Strafford Regional Planning Commission
Author: DC
Print Date: June 2008
Data: USGS (Contour) (1:25000) Rochester DEM and
Map derived from planning purposes only.

Data Sources

Base features are from USGS 1:24,000 scale Digital Line Graphs, as archived in the GRANIT database. Digital data in NH GRANIT represent the efforts of the contributing agencies to record information from the cited source materials. Complex Systems Research Center (CSRC), under contract to the Office of Energy & Planning (OEP), and in consultation with cooperating agencies, maintains a continuing program to identify and correct errors in these data. Neither OEP nor CSRC make any claim as to the validity or reliability or to any implied uses of these data.

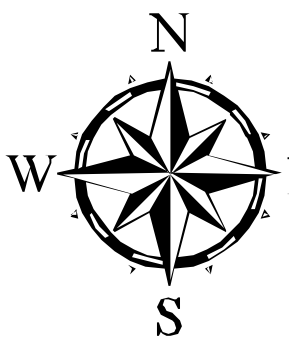
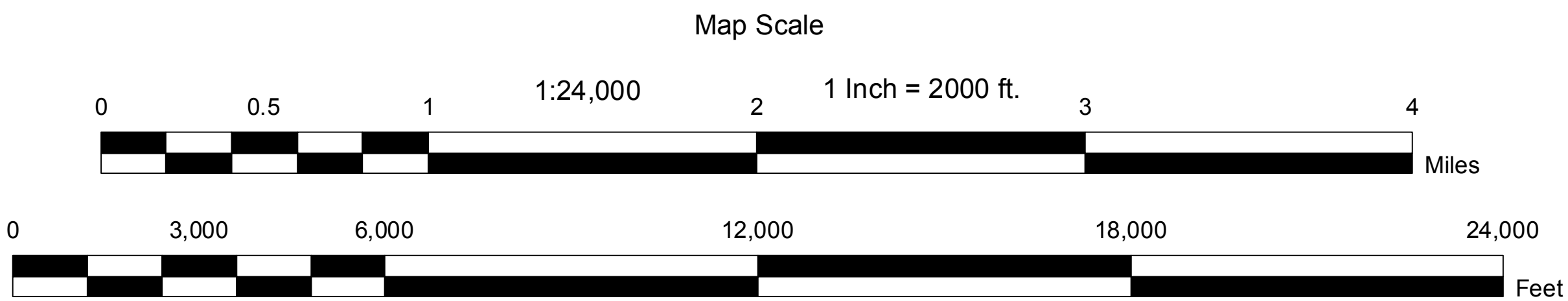
Transportation data provided by NHDOT (12-12-07), with updates to Street names by SRPC Staff. Known errors exist within the data. SRPC welcomes feedback on any updates to street names.

Digital tax parcels taken from SRPC database. Data should be used for planning purposes only. Data was derived from various sources and were updated at different time frames, with varying levels of accuracy.

Water Resources data provided by NH DES November 30, 2006.

Percent Slope data generated from USGS 7.5 minute digital elevation models (DEMs) which contain regular arrays of surface elevations at a spacing of 30 meters in both x and y directions. Data is archived in the USGS National Elevation Dataset.

Conservation Lands provided by NH GRANIT 12/2007



Grid North
NH State Plane Coordinates
North American Datum
1983 (Feet)

