

City of Rochester New Hampshire



Natural Resources Master Plan Chapter 2008

Agricultural Soils

Agricultural Soils		
Type	Acres	% Municipal Area
Farmland of Local Importance	6,779	23.3
Prime Farmland	2,961	10.2
Farmland of Statewide Importance	1,128	3.9
NRCS Strafford County Soil Survey of 1973		
2005 Agricultural Land Use		
Type	Acres	% Municipal Area
Agricultural Land	2,035	7.0
SRPC 2005 Landuse Data		

Legend

Agricultural Land

Soils of Special Importance

Farmclass

- Farmland of Statewide Importance
- Prime farmland
- Farmland of Local Importance

Political Features

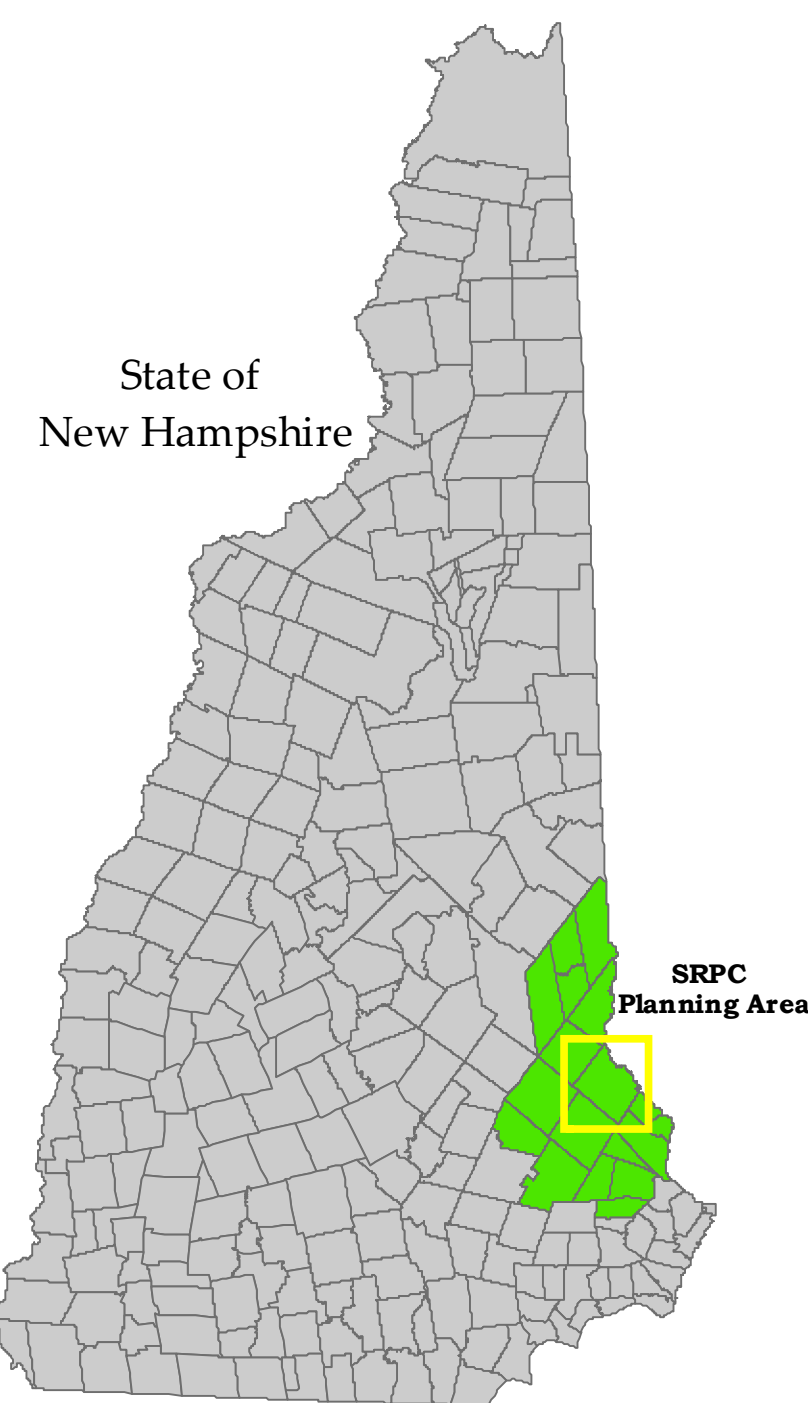
- Municipal Boundary
- 2006 Tax Parcels

Surface Water Features

- Lake, Pond, Reservoir
- Wetlands
- River, Stream, Brook

Transportation Features

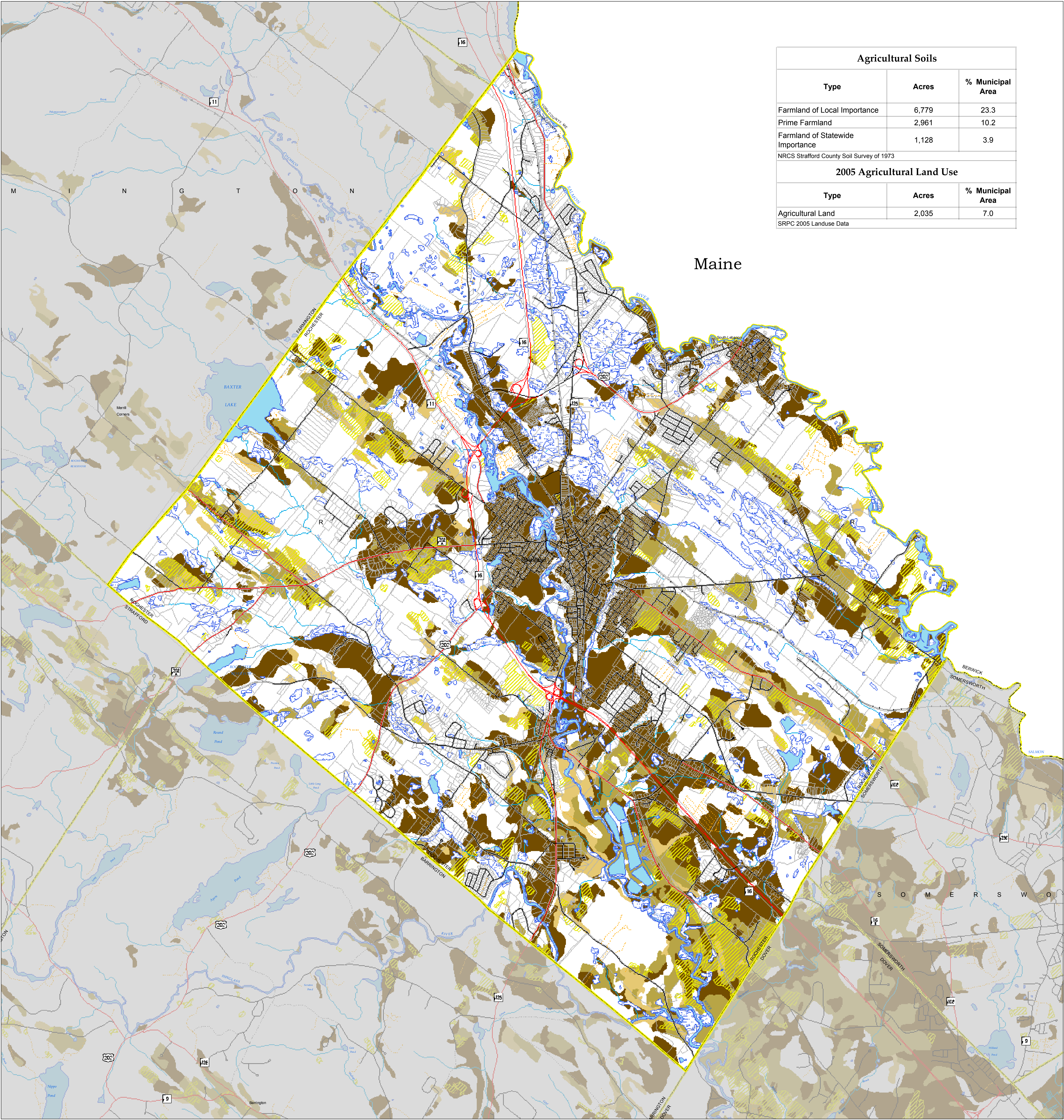
- Road Type
 - State
 - Federal
 - Local
 - Not Maintained
 - Private
 - Rail Road



This project was funded under the Coastal Zone Management Act by NOAA's Office of Ocean and Coastal Resource Management in conjunction with the New Hampshire Coastal Program.

This project was also funded in part by a grant from the New Hampshire Estuaries Project as authorized by the U.S. Environmental Protection Agency's National Estuary Program.

In addition, funding for this project was also provided by the City of Rochester Conservation Commission.



Map Created by the Strafford Regional Planning Commission
2 Ridge St., Suite 4 Dover, NH 03820
P: 603.752.5212 F: 603.752.7868 E: info@srpcnh.org
Website: www.srpcnh.org
Rochester Natural Resources Master Plan Chapter
Agricultural Soils
Created January 2008
Author: J.C.
Print Date: June 2008
Path: G:\Region Coastal\PD000\Bachman\Agricultural Soils.mxd
Map should be used for planning purposes only.

Data Sources

Base features are from USGS 1:24,000 scale Digital Line Graphs, as archived in the GRANIT database. Digital data in NH GRANIT represent the efforts of the contributing agencies to record information from the cited source materials. Complex Systems Research Center (CSRC), under contract to the Office of Energy & Planning (OEP), and in consultation with cooperating agencies, maintains a continuing program to identify and correct errors in these data. Neither OEP nor CSRC make any claim as to the validity or reliability or to any implied use of these data.

Transportation data provided by NHDOT with updates to Street names by SRPC Staff. Known errors exist within the data. SRPC welcomes feedback on any updates to street names.

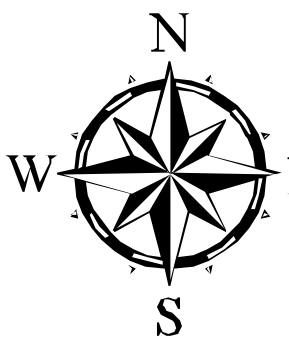
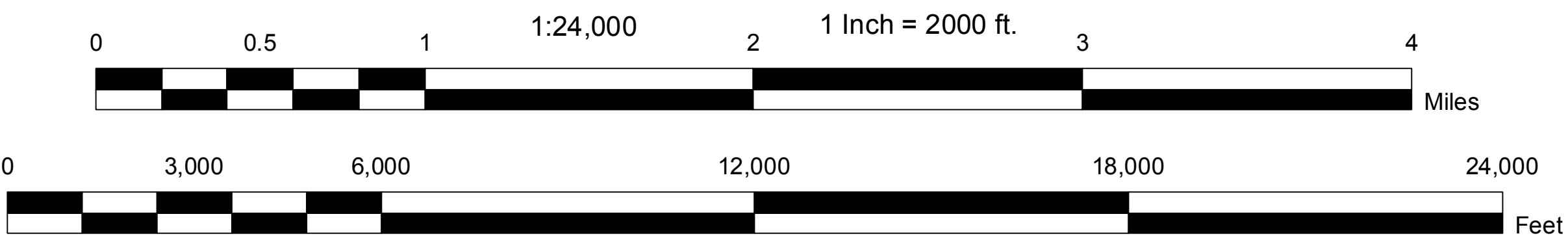
Digital tax parcels taken from SRPC database. **Data should be used for planning purposes only.** Data was derived from various sources and were updated at different timeframes, with varying levels of accuracy.

Agricultural Soils data derived from the Strafford County Soil Survey of 1973. Countywide soil surveys were produced by the USDA Natural Resources Conservation Service (NRCS).

Agricultural Land Use data delineated from NH DOT's High Resolution 2005 Imagery at a scale of 1:2,000. SRPC makes no claim as to the accuracy of this data and should be used for planning purposes only.



Map Scale



Grid North
NH State Plane Coordinates
North American Datum
1983 (Feet)

