

City of Rochester New Hampshire



Natural Resources Master Plan Chapter 2008

Wetlands

Wetlands		
Type	Acres	% Municipal Area
Lacustrine	291	3.2
Palustrine	2478	27.3
Riverine	84	0.9
Total	2853	31.4
Base data provided by US Fish and Wildlife Service, National Wetlands Inventory. Wetlands updated and inventoried by the Rochester Conservation Commission (1995).		

Hydric Soils		
Type	Acres	% Municipal Area
Very Poorly Drained (Hydric A)	1,166	4.0
Poorly Drained (Hydric B)	5,543	19.1
Total	6,709	23.1
NRCS, Strafford County Soil Survey 1973		

Legend

Political Features

- Municipal Boundary
- 2006 Tax Parcels

Surface Water Features

- Lake, Pond, River, Reservoir
- River, Stream, Brook

Strafford County Soil Survey 1973

Hydric Soils

- Very Poorly Drained (Hydric A)
- Poorly Drained (Hydric B)

Freshwater Wetlands Study

- Recommended for Prime Designation

National Wetlands Inventory

Type

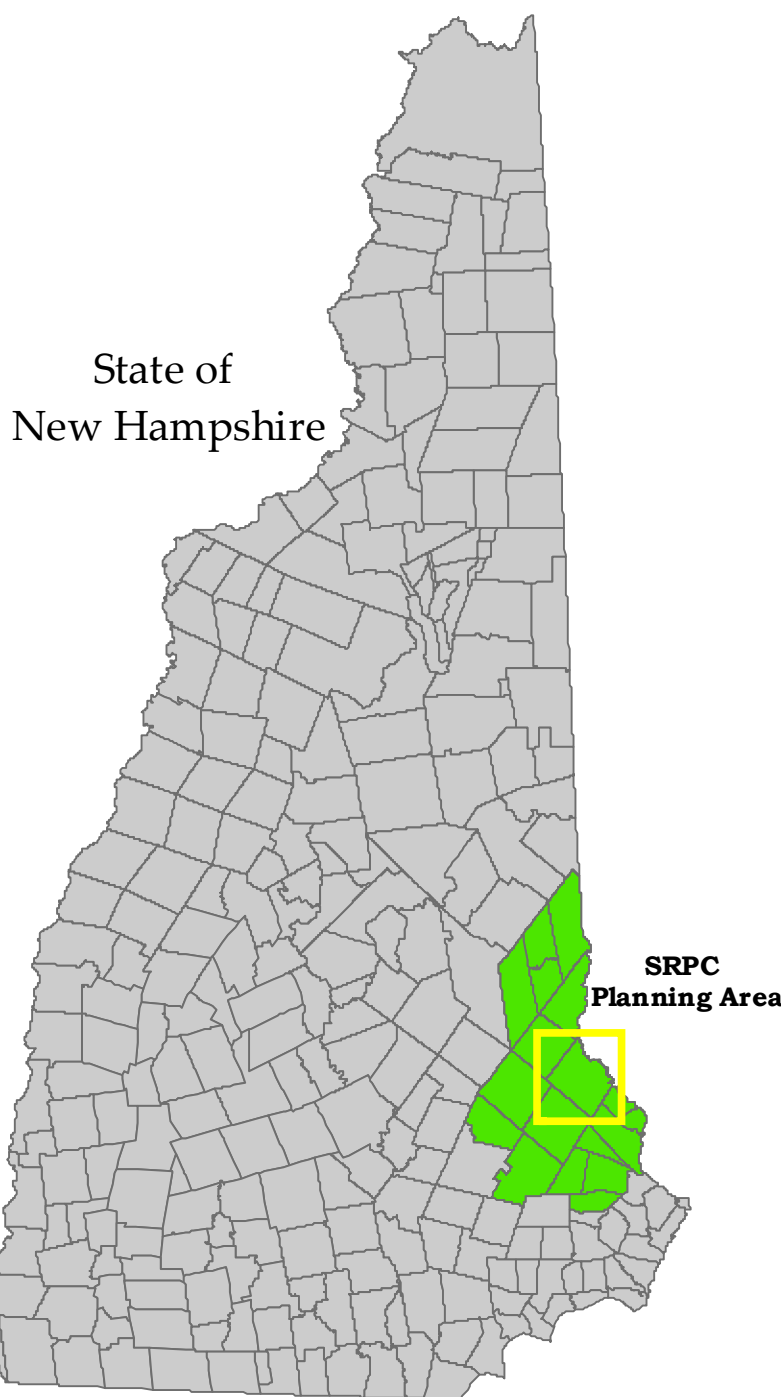
- Lacustrine
- Palustrine
- Riverine

Transportation Features

Road Type

- State
- Federal
- Local
- Not Maintained
- Private
- Rail Road

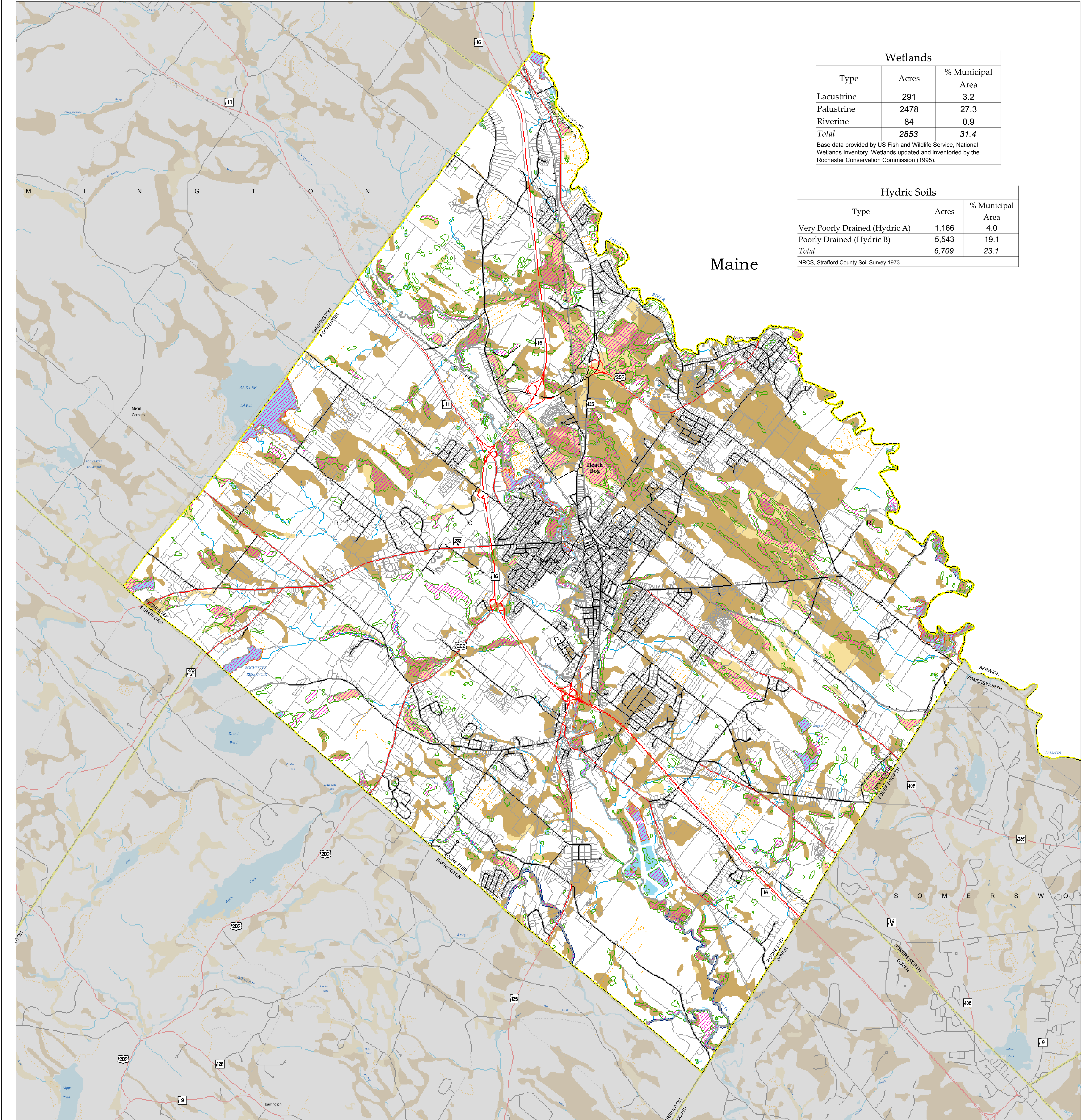
Note:
Wetlands are from US Fish and Wildlife Service 1:24,000 National Wetlands Inventory maps. Available digital NWI wetland data provided by Complex Systems Research Center, Durham, NH. This map does not include all wetlands in the City of Rochester.



State of
New Hampshire

SRPC
Planning Area

This project was funded under the Coastal Zone Management Act by NOAA's Office of Ocean and Coastal Resource Management in conjunction with the New Hampshire Coastal Program.
This project was also funded in part by a grant from the New Hampshire Estuaries Project as authorized by the U.S. Environmental Protection Agency's National Estuary Program.
In addition, funding for this project was also provided by the City of Rochester Conservation Commission.



Data Sources

Base features are from USGS 1:24,000 scale Digital Line Graphs, as archived in the GRANIT database. Digital data in NH GRANIT represent the efforts of the contributing agencies to record information from the cited source materials. Complex Systems Research Center (CSRC), under contract to the Office of Energy & Planning (OEP), and in consultation with cooperating agencies, maintains a continuing program to identify and correct errors in these data. Neither CSRC nor CSRC make any claim as to the validity or reliability or to any implied uses of these data.

Transportation data provided by NHDOT (12-12-07), with updates to Street names by SRPC Staff. Known errors exist within the data. SRPC welcomes feedback on any updates to street names.

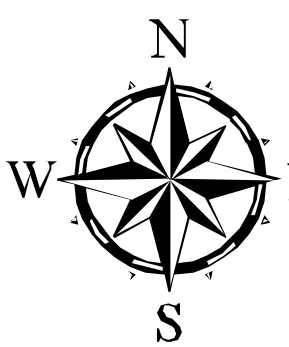
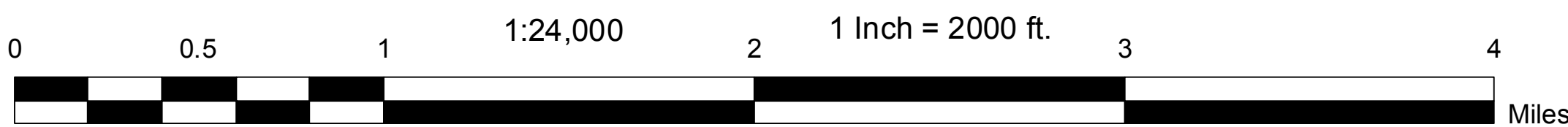
Soils data derived from the Strafford County Soil Survey of 1973. County-wide soil surveys produced by the USDA Natural Resources Conservation Service.

Wetlands are from US Fish and Wildlife Service 1:24,000 National Wetlands Inventory maps. Available digital NWI wetland data provided by Complex Systems Research Center, Durham, NH.

Water Resources data provided by NH DES November 30, 2006.

Digital tax parcels taken from SRPC database. Data should be used for planning purposes only. Data was derived from various sources and were updated at different time frames, with varying levels of accuracy.

Map Scale



Grid North
NH State Plane Coordinates
North American Datum
1983 (Feet)