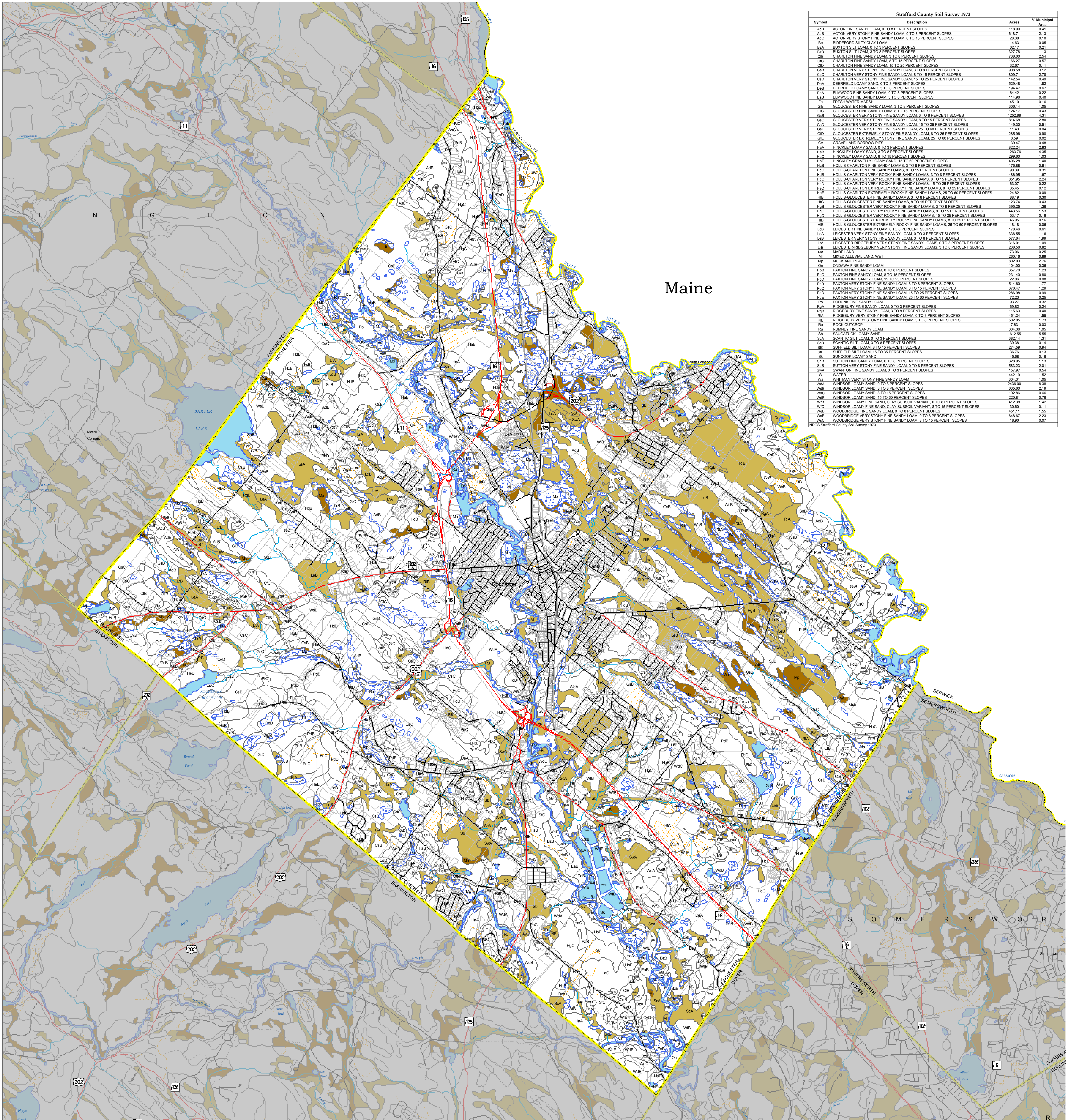


City of Rochester New Hampshire



Natural Resources Master Plan Chapter 2008

General Soils Map



Symbol	Description	Acres	% Municipal Area
AcB	ACTON FINE SANDY LOAM, 0 TO 8 PERCENT SLOPES	118.99	0.41
AcB	ACTON VERY STONY FINE SANDY LOAM, 0 TO 8 PERCENT SLOPES	618.71	2.13
AcC	ACTON VERY STONY FINE SANDY LOAM, 8 TO 15 PERCENT SLOPES	26.38	0.10
Ba	BIDDEFORD SILTY CLAY LOAM	14.63	0.05
BaB	BIDDEFORD SILTY CLAY LOAM, 0 TO 3 PERCENT SLOPES	62.17	0.21
BuB	BUXTON SILT LOAM, 3 TO 8 PERCENT SLOPES	327.78	1.13
CB	CHARLTON FINE SANDY LOAM, 3 TO 8 PERCENT SLOPES	738.00	2.54
CcC	CHARLTON FINE SANDY LOAM, 8 TO 15 PERCENT SLOPES	166.27	0.57
CD	CHARLTON FINE SANDY LOAM, 15 TO 25 PERCENT SLOPES	35.07	0.12
CdB	CHARLTON VERY STONY FINE SANDY LOAM, 3 TO 8 PERCENT SLOPES	806.58	3.12
CdC	CHARLTON VERY STONY FINE SANDY LOAM, 8 TO 15 PERCENT SLOPES	125.88	0.45
CdD	CHARLTON VERY STONY FINE SANDY LOAM, 15 TO 25 PERCENT SLOPES	142.54	0.49
DnA	DEERFIELD LOAMY SAND, 0 TO 3 PERCENT SLOPES	529.48	1.82
DnB	DEERFIELD LOAMY SAND, 3 TO 8 PERCENT SLOPES	156.47	0.57
EaA	ELMWOOD FINE SANDY LOAM, 0 TO 3 PERCENT SLOPES	64.42	0.22
EaB	ELMWOOD FINE SANDY LOAM, 3 TO 8 PERCENT SLOPES	114.86	0.40
Fa	FRESH WATER MARSH	45.10	0.16
GbB	GLOUCESTER FINE SANDY LOAM, 3 TO 8 PERCENT SLOPES	395.14	1.35
GcC	GLOUCESTER FINE SANDY LOAM, 8 TO 15 PERCENT SLOPES	126.17	0.43
GcB	GLOUCESTER VERY STONY FINE SANDY LOAM, 3 TO 8 PERCENT SLOPES	125.88	0.45
GcC	GLOUCESTER VERY STONY FINE SANDY LOAM, 8 TO 15 PERCENT SLOPES	814.68	2.83
GcD	GLOUCESTER VERY STONY FINE SANDY LOAM, 15 TO 25 PERCENT SLOPES	146.90	0.52
GcE	GLOUCESTER VERY STONY FINE SANDY LOAM, 25 TO 60 PERCENT SLOPES	11.43	0.04
GdD	GLOUCESTER EXTREMELY STONY FINE SANDY LOAM, 8 TO 25 PERCENT SLOPES	285.96	0.98
GdE	GLOUCESTER EXTREMELY STONY FINE SANDY LOAM, 25 TO 60 PERCENT SLOPES	6.09	0.02
Gv	GRAVEL AND BORROW PITS	139.47	0.48
HsA	HINCKLEY LOAMY SAND, 0 TO 3 PERCENT SLOPES	822.24	2.83
HsB	HINCKLEY LOAMY SAND, 3 TO 8 PERCENT SLOPES	1263.76	4.35
HsC	HINCKLEY LOAMY SAND, 8 TO 15 PERCENT SLOPES	266.63	0.93
HsE	HINCKLEY GRAVELLY LOAMY SAND, 15 TO 60 PERCENT SLOPES	406.28	1.40
HsB	HOLLIS-CHARLTON FINE SANDY LOAM, 3 TO 8 PERCENT SLOPES	175.88	0.61
HsC	HOLLIS-CHARLTON FINE SANDY LOAM, 8 TO 15 PERCENT SLOPES	90.39	0.31
HsD	HOLLIS-CHARLTON VERY ROCKY FINE SANDY LOAM, 3 TO 8 PERCENT SLOPES	486.95	1.67
HsC	HOLLIS-CHARLTON VERY ROCKY FINE SANDY LOAM, 8 TO 15 PERCENT SLOPES	651.95	2.24
HsD	HOLLIS-CHARLTON VERY ROCKY FINE SANDY LOAM, 15 TO 25 PERCENT SLOPES	63.07	0.22
HsE	HOLLIS-CHARLTON EXTREMELY ROCKY FINE SANDY LOAM, 8 TO 25 PERCENT SLOPES	35.45	0.12
HsE	HOLLIS-CHARLTON EXTREMELY ROCKY FINE SANDY LOAM, 25 TO 60 PERCENT SLOPES	24.82	0.09
HsB	HOLLIS-GLOUCESTER FINE SANDY LOAM, 3 TO 8 PERCENT SLOPES	88.19	0.30
HsC	HOLLIS-GLOUCESTER FINE SANDY LOAM, 8 TO 15 PERCENT SLOPES	123.74	0.43
HsB	HOLLIS-GLOUCESTER VERY ROCKY FINE SANDY LOAM, 3 TO 8 PERCENT SLOPES	389.25	1.36
HsC	HOLLIS-GLOUCESTER VERY ROCKY FINE SANDY LOAM, 8 TO 15 PERCENT SLOPES	443.56	1.53
HsD	HOLLIS-GLOUCESTER VERY ROCKY FINE SANDY LOAM, 15 TO 25 PERCENT SLOPES	53.17	0.18
HsD	HOLLIS-GLOUCESTER EXTREMELY ROCKY FINE SANDY LOAM, 8 TO 25 PERCENT SLOPES	46.95	0.16
HsD	HOLLIS-GLOUCESTER EXTREMELY ROCKY FINE SANDY LOAM, 25 TO 60 PERCENT SLOPES	16.18	0.05
LcB	LEICESTER FINE SANDY LOAM, 0 TO 8 PERCENT SLOPES	176.48	0.61
LcA	LEICESTER VERY STONY FINE SANDY LOAM, 0 TO 3 PERCENT SLOPES	336.55	1.16
LcB	LEICESTER VERY STONY FINE SANDY LOAM, 3 TO 8 PERCENT SLOPES	577.84	1.99
LcA	LEICESTER RIDGEURRY VERY STONY FINE SANDY LOAM, 0 TO 3 PERCENT SLOPES	316.01	1.09
LcB	LEICESTER RIDGEURRY VERY STONY FINE SANDY LOAM, 3 TO 8 PERCENT SLOPES	248.95	0.86
M	MADE LAND	73.06	0.25
M	MIXED ALLUVIAL LAND, WET	286.15	0.99
Mp	MUCK AND PEAT	602.03	2.16
Q	QUAKERS FINE SANDY LOAM	150.90	0.52
HsB	PAXTON FINE SANDY LOAM, 0 TO 8 PERCENT SLOPES	357.70	1.23
HsB	PAXTON FINE SANDY LOAM, 8 TO 15 PERCENT SLOPES	421.40	1.48
PcD	PAXTON FINE SANDY LOAM, 15 TO 25 PERCENT SLOPES	22.06	0.08
PcB	PAXTON VERY STONY FINE SANDY LOAM, 3 TO 8 PERCENT SLOPES	514.62	1.77
PcC	PAXTON VERY STONY FINE SANDY LOAM, 8 TO 15 PERCENT SLOPES	376.47	1.29
PcD	PAXTON VERY STONY FINE SANDY LOAM, 15 TO 25 PERCENT SLOPES	288.88	0.99
PcE	PAXTON VERY STONY FINE SANDY LOAM, 25 TO 60 PERCENT SLOPES	72.23	0.25
Po	POUNK FINE SANDY LOAM, 0 TO 3 PERCENT SLOPES	63.27	0.22
RcA	RODGEBURY FINE SANDY LOAM, 0 TO 3 PERCENT SLOPES	69.82	0.24
RcB	RODGEBURY FINE SANDY LOAM, 3 TO 8 PERCENT SLOPES	115.63	0.40
RcA	RODGEBURY VERY STONY FINE SANDY LOAM, 0 TO 3 PERCENT SLOPES	451.24	1.55
RcB	RODGEBURY VERY STONY FINE SANDY LOAM, 3 TO 8 PERCENT SLOPES	602.05	1.73
Ru	ROCK OUTCROPS	7.63	0.03
Ru	RUANEY FINE SANDY LOAM	304.36	1.05
Sa	SAUGATUCK LOAMY SAND	1612.55	5.55
SaA	SCANTIC SILT LOAM, 0 TO 3 PERCENT SLOPES	382.14	1.31
SaB	SCANTIC SILT LOAM, 3 TO 8 PERCENT SLOPES	39.38	0.14
SaC	SUFFIELD SILT LOAM, 8 TO 15 PERCENT SLOPES	274.09	0.94
SaE	SUFFIELD SILT LOAM, 15 TO 35 PERCENT SLOPES	36.76	0.13
Sa	SUNCOK LOAMY SAND	45.68	0.16
SaB	SUTTON FINE SANDY LOAM, 0 TO 8 PERCENT SLOPES	328.95	1.13
SaB	SUTTON VERY STONY FINE SANDY LOAM, 0 TO 3 PERCENT SLOPES	483.23	1.67
SaA	SWANTON FINE SANDY LOAM, 0 TO 3 PERCENT SLOPES	157.97	0.54
W	WATER	442.19	1.52
Wp	WHITMAN VERY STONY FINE SANDY LOAM	304.31	1.05
WpA	WINDSOR LOAMY SAND, 0 TO 3 PERCENT SLOPES	2435.00	8.38
WpB	WINDSOR LOAMY SAND, 3 TO 8 PERCENT SLOPES	639.60	2.19
WpC	WINDSOR LOAMY SAND, 8 TO 15 PERCENT SLOPES	192.86	0.66
WpE	WINDSOR LOAMY SAND, 15 TO 25 PERCENT SLOPES	220.81	0.76
WpB	WINDSOR LOAMY FINE SAND, CLAY SUBSOIL VARIANT, 0 TO 8 PERCENT SLOPES	412.38	1.42
WpC	WINDSOR LOAMY FINE SAND, CLAY SUBSOIL VARIANT, 8 TO 15 PERCENT SLOPES	30.60	0.11
WpB	WOODBRIDGE FINE SANDY LOAM, 0 TO 8 PERCENT SLOPES	451.11	1.55
WpB	WOODBRIDGE VERY STONY FINE SANDY LOAM, 0 TO 3 PERCENT SLOPES	648.97	2.23
WpC	WOODBRIDGE VERY STONY FINE SANDY LOAM, 3 TO 8 PERCENT SLOPES	18.90	0.07

Legend

Soil Features

- NRCS Soil Boundary
- Very Poorly Drained (Hydric A)
- Poorly Drained (Hydric B)

Political Features

- Municipal Boundary
- 2006 Tax Parcels

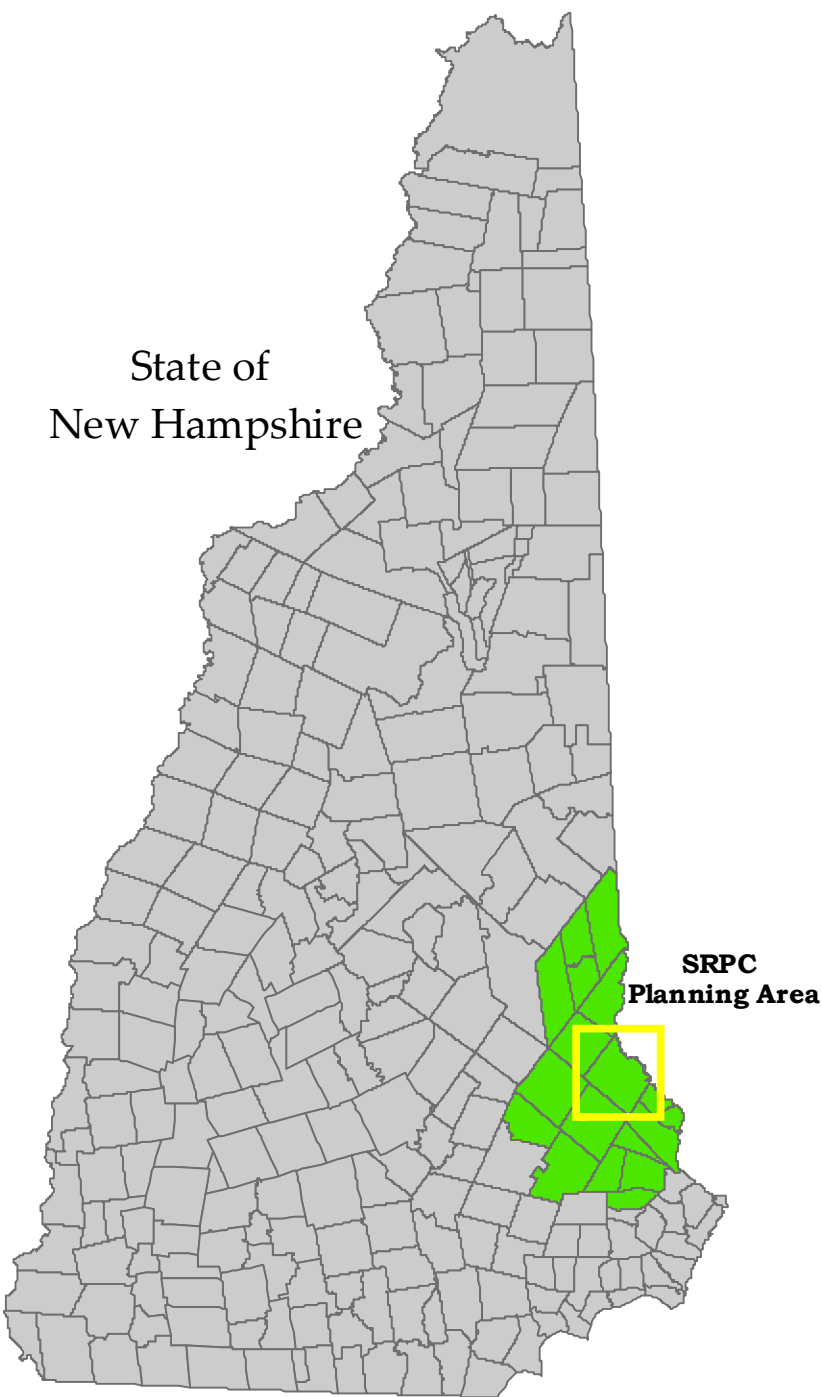
Surface Water Features

- Lake, Pond, Reservoir
- Wetlands
- River, Stream, Brook

Transportation Features

- Road Type
 - State
 - Federal
 - Local
 - Not Maintained
 - Private
 - Rail Road

State of
New Hampshire



This project was funded under the Coastal Zone Management Act by NOAA's Office of Ocean and Coastal Resource Management in conjunction with the New Hampshire Coastal Program. This project was also funded in part by a grant from the New Hampshire Estuaries Project as authorized by the U.S. Environmental Protection Agency's National Estuary Program. In addition, funding for this project was also provided by the City of Rochester Conservation Commission.



Map Created by the Strafford Regional Planning Commission
2 Bridge St., Suite 100, Dover, NH 03820
P: 603.742.2323 F: 603.742.7966 E: info@srpc.com
Website: www.srpc.com
Name: Rochester Natural Resources Master Plan Chapter
General Soils Map
Created: January 2008
Author: SR
Print Date: June 2008
Path: G:\Regional Council\FY2008\Rochester\Soils.mxd
May should be used for planning purposes only.

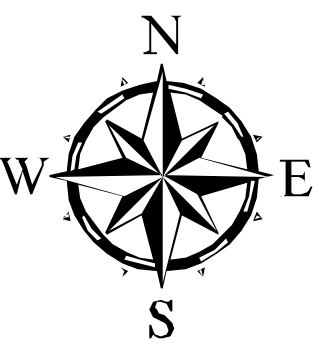
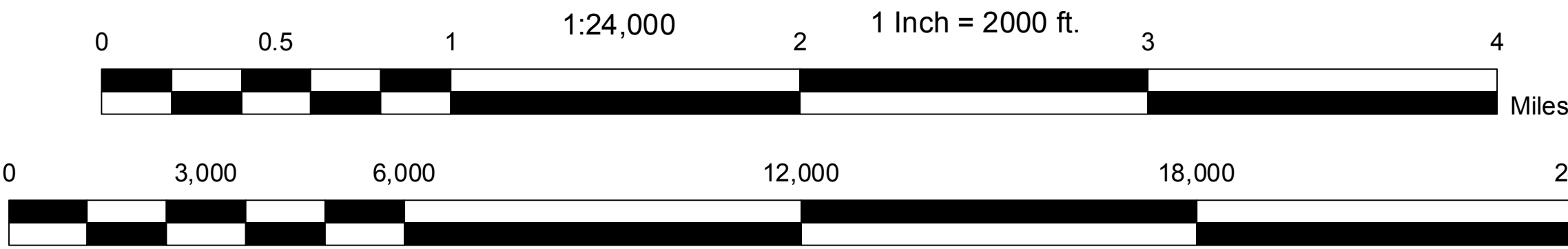
Base features are from USGS 1:24,000 scale Digital Line Graphs, as archived in the GRANIT database. Digital data in NH GRANIT represent the efforts of the contributing agencies to record information from the cited source materials. Complex Systems Research Center (CSRC), under contract to the Office of Energy & Planning (OEP), and in consultation with cooperating agencies, maintains a continuing program to identify and correct errors in these data. Neither OEP nor CSRC make any claim as to the validity or reliability or to any implied uses of these data.

Transportation data provided by NHDOT with updates to Street names by SRPC Staff. Known errors exist within the data. SRPC welcomes feedback on any updates to street names.

Digital tax parcels taken from SRPC database. Data should be used for planning purposes only. Data was derived from various sources and were updated at different timeframes, with varying levels of accuracy.

Agricultural Soils data derived from the Strafford County Soil Survey of 1973. County-wide soil surveys were produced by the USDA Natural Resources Conservation Service (NRCS).

Map Scale



Grid North
NH State Plane Coordinates
North American Datum
1983 (Feet)

