

City of Rochester New Hampshire



Natural Resources Master Plan Chapter 2008

Forest Types and Contiguous Forest Blocks

Forest Type	Acres	% Total Land Area
Mixed Forest	8733	30.0
Beech/Oak	1869	6.4
Other Hardwoods	1680	5.8
White/Red Pine	2115	7.3
Hemlock	220	0.8
Forested Wetland	631	2.2
Orchard	25	0.1
Total	15273	52.5

Land Cover Assessment, Complex Systems Research Center, 2001

Contiguous Forest Blocks		
ID Number	Major Forest Type	Acres
1	Appalachian oak-pine	869
2	Appalachian oak-pine	493
3	Hemlock hardwood-pine	1404
4	Hemlock hardwood-pine	83
5	Appalachian oak-pine	1232
6	Appalachian oak-pine	408

NH Fish and Game Wildlife Action Plan 2007

Legend

Contiguous/Unfragmented Forest Blocks

Political Features

Municipal Boundary

2006 Tax Parcels

2001 Land Cover Assessment

Forest Type

- Beech/Oak
 - Forested Wetland
 - Hemlock
 - Mixed Forest
 - Orchards
 - White/Red Pine
 - Other Hardwoods
- White Areas Represent Non-Forested Land

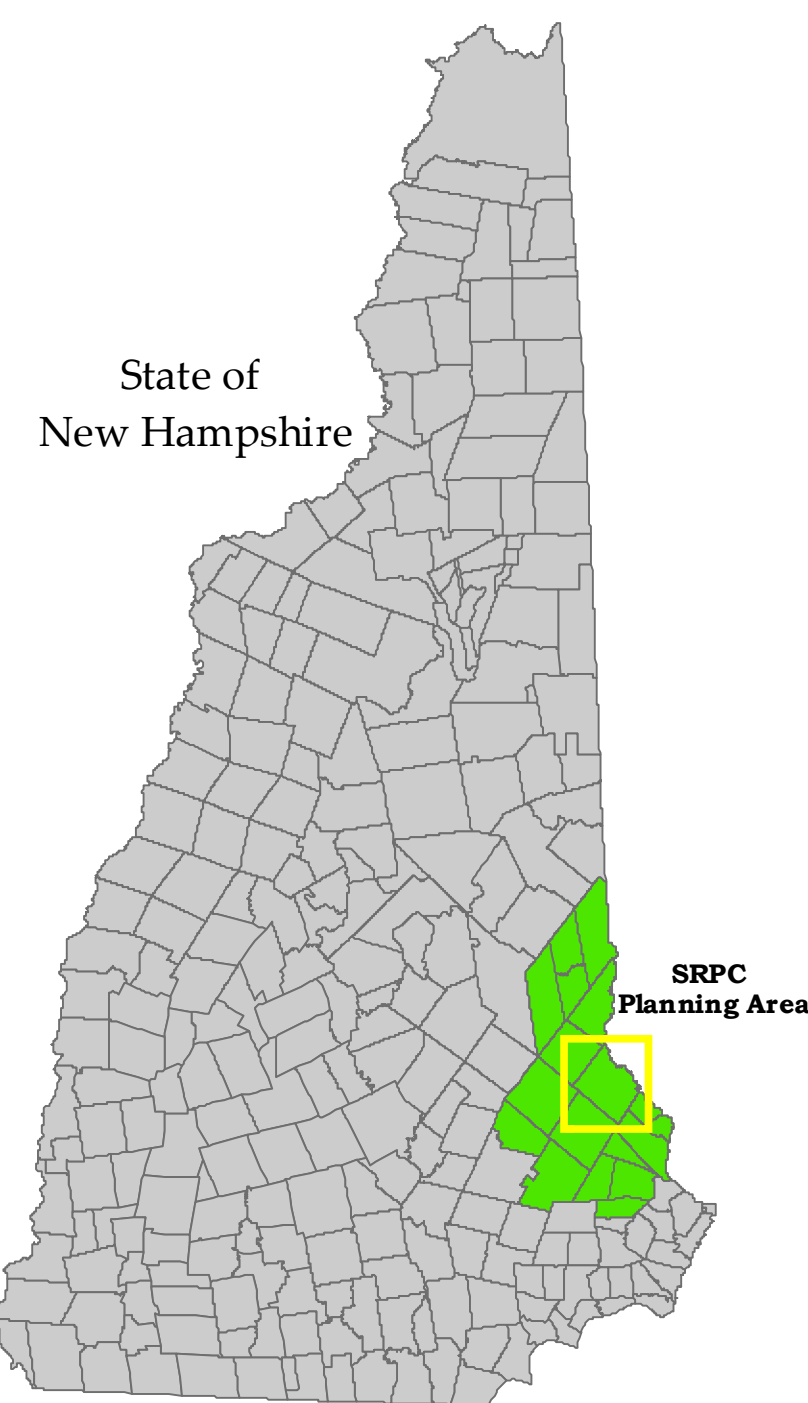
Surface Water Features

- Lake, Pond, River, Reservoir
- Wetlands
- River, Stream, Brook

Transportation Features

Road Type

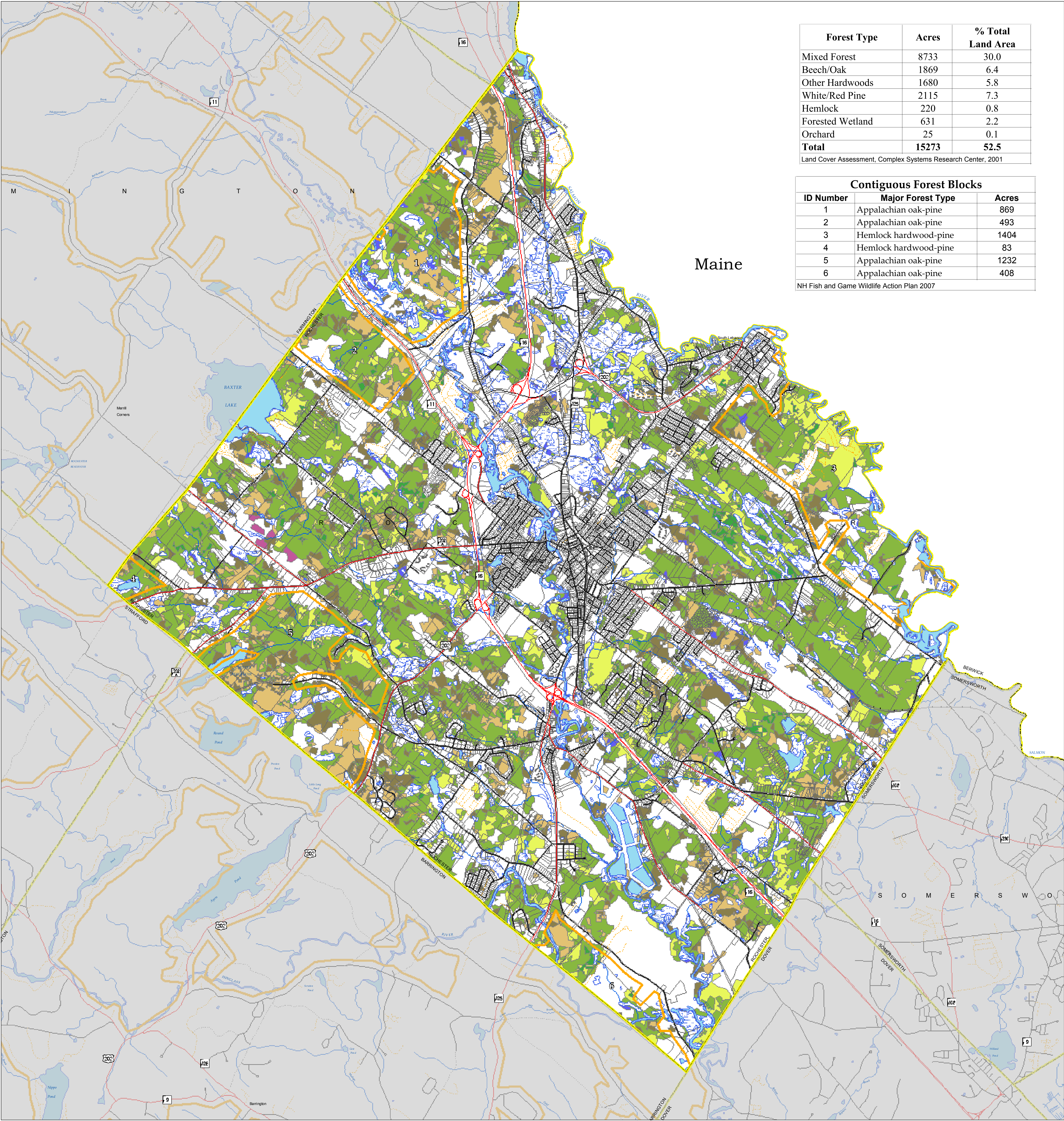
- State
- Federal
- Local
- Not Maintained
- Private
- Rail Road



This project was funded under the Coastal Zone Management Act by NOAA's Office of Ocean and Coastal Resource Management in conjunction with the New Hampshire Coastal Program.

This project was also funded in part by a grant from the New Hampshire Estuaries Project as authorized by the U.S. Environmental Protection Agency's National Estuary Program.

In addition, funding for this project was also provided by the City of Rochester Conservation Commission.



Data Sources

Base features are from USGS 1:24,000 scale Digital Line Graphs, as archived in the GRANIT database. Digital data in NH GRANIT represent the efforts of the contributing agencies to record information from the cited source materials. Complex Systems Research Center (CSRC), under contract to the Office of Energy & Planning (OEP), and in consultation with cooperating agencies, maintains a continuing program to identify and correct errors in these data. Neither OEP nor CSRC make any claim as to the validity or reliability or to any implied uses of these data.

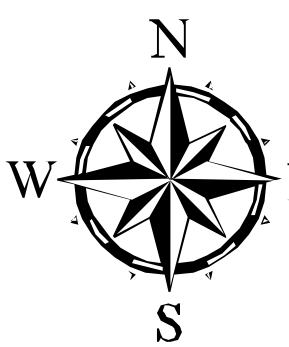
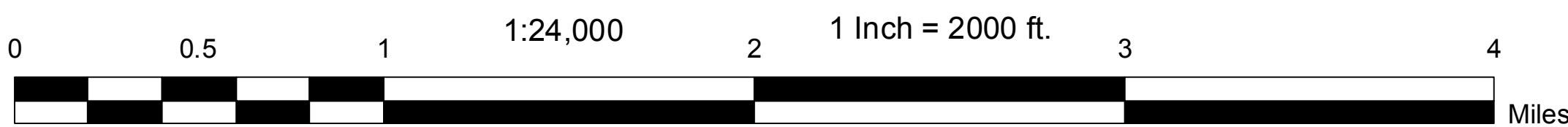
Transportation data provided by NHDOT (12-12-07), with updates to Street names by SRPC Staff. Known errors exist within the data. SRPC welcomes feedback on any updates to street names.

Land Cover data derived from The New Hampshire Land Cover Assessment 2001 prepared by Complex Systems Research Center, Durham, NH. Satellite images acquired by Landsat Thematic Mapper between 1990 and 1999.

Digital tax parcels taken from SRPC database. Data should be used for planning purposes only. Data was derived from various sources and were updated at different time frames, with varying levels of accuracy.

Contiguous Forest Block data provided by NH Fish and Game 2007. A 300' buffer of all public roads was used in creating the layer.

Map Scale



Grid North
NH State Plane Coordinates
North American Datum
1983 (Feet)

