

## Colonial Pines Sewer Extension – Phase 3

### **Project Update** **November 30<sup>th</sup> through Winter Shutdown**

#### ***Upcoming Work***

##### **Drainage Work**

Contractor crews will finish stabilizing the project area for Winter shutdown.

##### **Sewer Work**

Contractor crews will continue private property sewer service connections throughout the project area. The contractor will be coordinating with residents for the proposed work.

##### **Road Work**

Road work is not anticipated.

Crews will be completing miscellaneous clean up tasks to secure the job site for winter.

#### ***Traffic Patterns***

##### **Road Closures:**

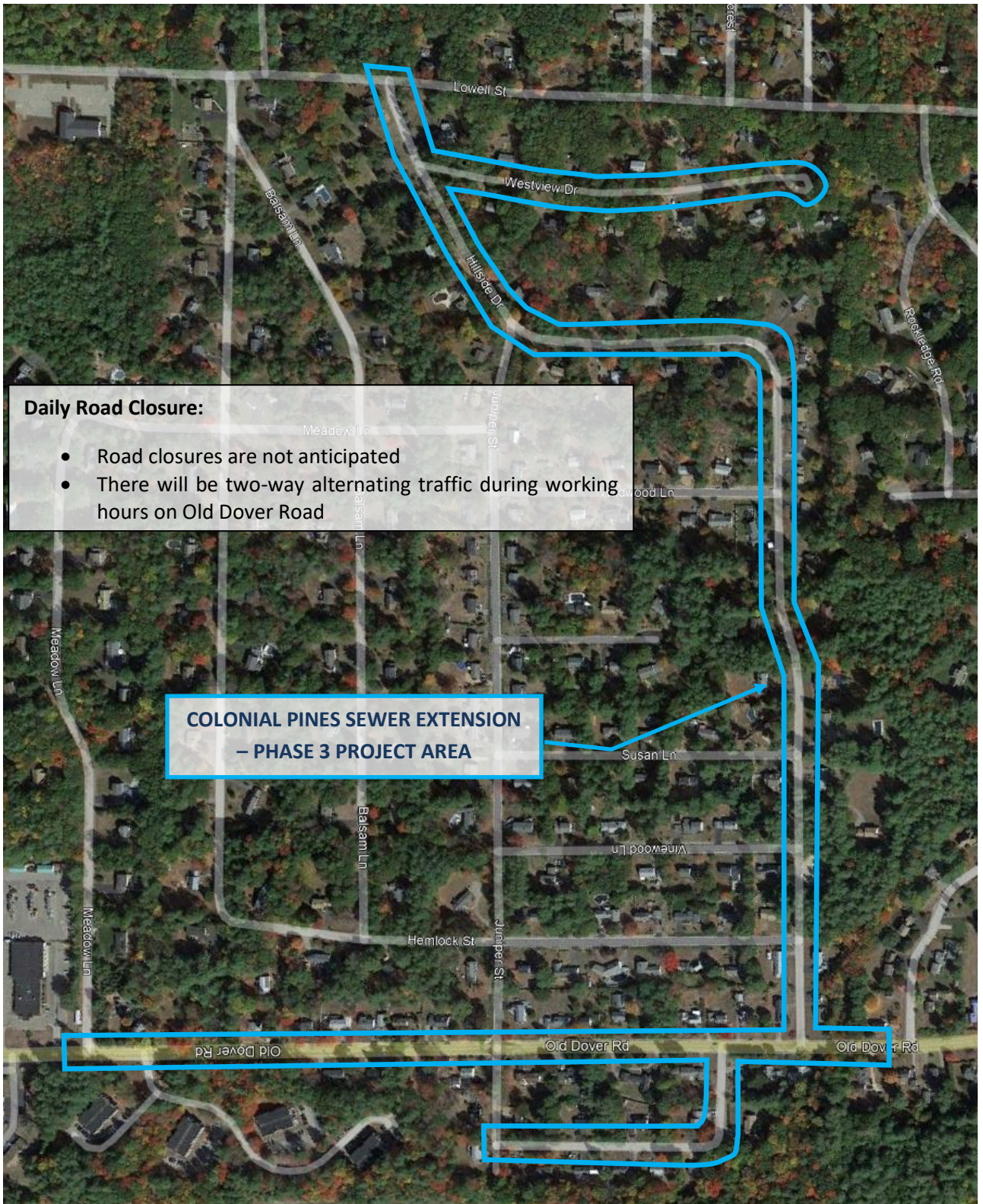
- Road closures are not anticipated
- There will be two-way alternating traffic during working hours on Old Dover Road

##### **Parking:**

- Aside from properties scheduled for private property work, parking restrictions are not anticipated.
- Residents will be notified to move their cars out of driveways if needed

#### ***General Notes***

All work in the area is weather permitting. If you have any questions or concerns, please contact Timothy Goldthwaite, P.E., Assistant City Engineer at (603) 509-1907.



**Daily Road Closure:**

- Road closures are not anticipated
- There will be two-way alternating traffic during working hours on Old Dover Road

**COLONIAL PINES SEWER EXTENSION  
– PHASE 3 PROJECT AREA**