

# SITE NOTES:

1. THE PURPOSE OF THIS PLAN SET IS TO CREATE A SAFE, ORGANIZED PARKING DESIGN ON AN EXISTING PARKING AREA BY RE-GRADING THE ENTIRE PARKING LOT, PAVING, AND STRIPING DEFINED PARKING STALLS; SIDEWALK FROM THE INTERSECTION OF SOUTH MAIN STREET TO THE INTERSECTION OF CHARLES STREET; RECONSTRUCT 145L.F.± OF ROADWAY TO ALLOW FOR SIDEWALK IMPROVEMENTS; LANDSCAPE IN NEWLY DEFINED LANDSCAPE AREAS WITHIN THE PROJECT LIMITS. COMPREHENSIVE DESIGN ELEMENTS INCLUDE DRAINAGE IMPROVEMENTS, RELOCATION OF OVERHEAD UTILITIES UNDERGROUND, SIDEWALK TREE WELLS, STAMPED CONCRETE SIDEWALK ISLANDS AND STAMPED PAVED CROSSWALKS

2. THE CONTRACTOR SHALL BID AND PERFORM THE WORK IN ACCORDANCE WITH ALL LOCAL, STATE AND NATIONAL CODES, SPECIFICATIONS, REGULATIONS, AND STANDARDS.

3. WRITTEN DIMENSIONS HAVE PRECEDENCE OVER SCALED DIMENSIONS. THE CONTRACTOR SHALL USE CAUTION WHEN SCALING REPRODUCED PLANS, IN CASE OF CONFLICT BETWEEN THIS PLAN SET AND ANY OTHER DRAWING AND/OR SPECIFICATION, THE ENGINEER SHALL BE NOTIFIED IMMEDIATELY FOR CLARIFICATIONS.

4. THE CONTRACTOR IS RESPONSIBLE FOR THE MEANS AND METHODS OF CONSTRUCTION AND FOR CONDITIONS AT THE SITE. THESE PLANS, PREPARED BY CLD CONSULTING ENGINEERS, INC. DO NOT EXTEND TO OR INCLUDE SYSTEMS PERTAINING TO THE SAFETY OF THE CONSTRUCTION CONTRACTOR OR THEIR EMPLOYEES, AGENTS OR REPRESENTATIVES IN THE PERFORMANCE OF THE WORK. THE SEAL OF THE SURVEYOR OR ENGINEER HEREON DOES NOT EXTEND TO ANY SUCH SAFETY SYSTEMS THAT MAY NOW OR HEREAFTER BE INCORPORATED INTO THESE PLANS. THE CONSTRUCTION CONTRACTOR SHALL PREPARE OR OBTAIN THE APPROPRIATE SAFETY SYSTEMS WHICH MAY BE REQUIRED BY THE U.S. OCCUPATIONAL SAFETY AND HEALTH ADMINISTRATION (OSHA) AND/OR LOCAL REGULATIONS.

5. IT SHALL BE THE CONTRACTOR'S RESPONSIBILITY TO FAMILIARIZE HIMSELF WITH THE SITE AND EXISTING CONDITIONS SURROUNDING IT AND THEREON. THE CONTRACTOR SHALL ADVISE THE APPROPRIATE AUTHORITY OF HIS INTENTIONS AT LEAST 48 HOURS IN ADVANCE.

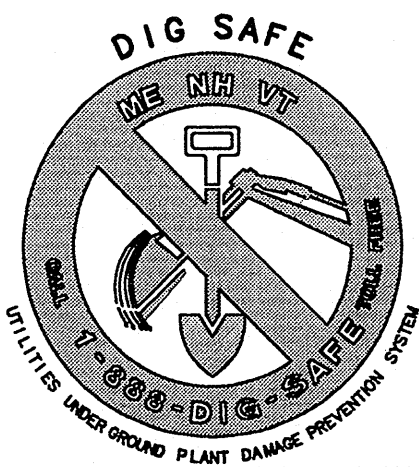
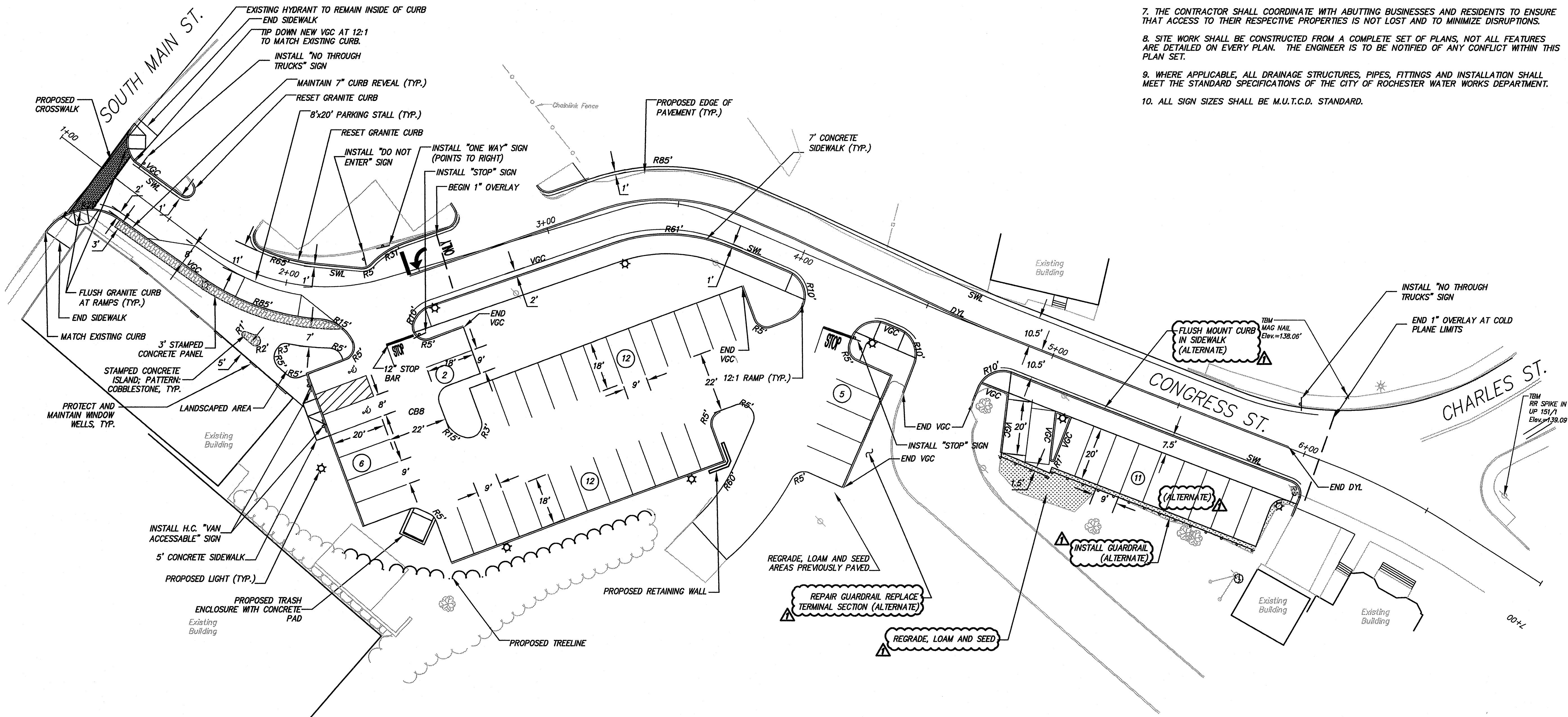
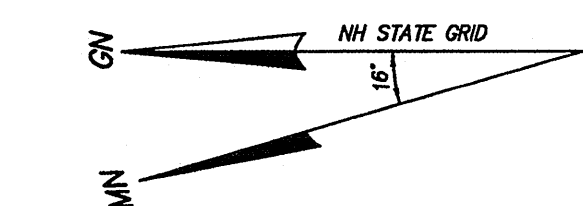
6. THE CONTRACTOR SHALL MAINTAIN EMERGENCY ACCESS TO ALL AREAS AFFECTED BY HIS WORK AT ALL TIMES.

7. THE CONTRACTOR SHALL COORDINATE WITH ABUTTING BUSINESSES AND RESIDENTS TO ENSURE THAT ACCESS TO THEIR RESPECTIVE PROPERTIES IS NOT LOST AND TO MINIMIZE DISRUPTIONS.

8. SITE WORK SHALL BE CONSTRUCTED FROM A COMPLETE SET OF PLANS, NOT ALL FEATURES ARE DETAILED ON EVERY PLAN. THE ENGINEER IS TO BE NOTIFIED OF ANY CONFLICT WITHIN THIS PLAN SET.

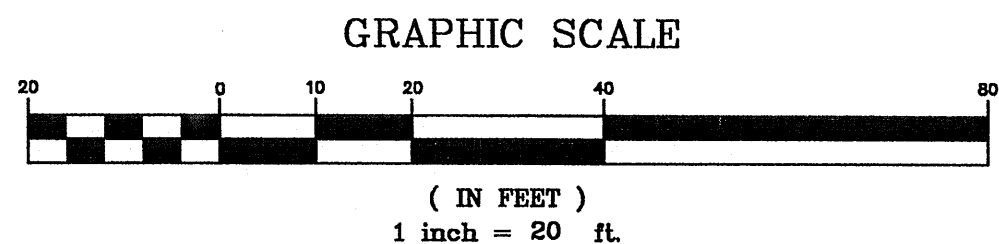
9. WHERE APPLICABLE, ALL DRAINAGE STRUCTURES, PIPES, FITTINGS AND INSTALLATION SHALL MEET THE STANDARD SPECIFICATIONS OF THE CITY OF ROCHESTER WATER WORKS DEPARTMENT.

10. ALL SIGN SIZES SHALL BE M.U.T.C.D. STANDARD.

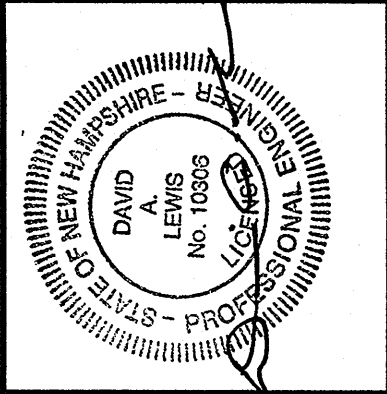


CONTACT DIG SAFE 72 HOURS PRIOR TO CONSTRUCTION

THE LOCATION OF ANY UTILITY INFORMATION SHOWN ON THIS PLAN IS APPROXIMATE. CLD ENG. INC. MAKES NO CLAIM TO THE ACCURACY OR COMPLETENESS OF UTILITIES SHOWN. 72 HOURS PRIOR TO ANY EXCAVATION ON SITE, THE CONTRACTOR SHALL CONTACT DIG-SAFE AT 1-888-DIG-SAFE.



NO.	DATE	REVISION	DESIGNED	CHECKED	APPROVED
1	10/07		ELL	DAL	DAL



CITY OF ROCHESTER  
31 WAKEFIELD STREET  
ROCHESTER, NH

CONGRESS STREET  
IMPROVEMENTS  
ROCHESTER, NEW HAMPSHIRE  
SITE PLAN

SCALE: 1"=20'	JOB NO. 05-0123
DATE: MAY 2007	DWG. C3 4 OF 13