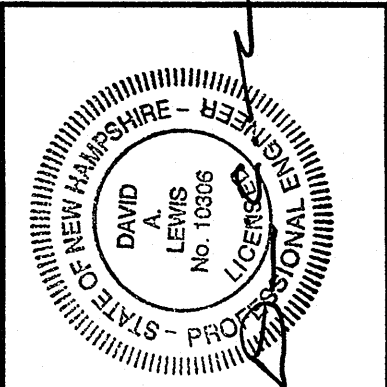


LANDSCAPE NOTES:

1. ALL UTILITIES SHALL BE LOCATED AND MARKED PRIOR TO ANY SITE PREPARATION WORK. MINOR ADJUSTMENTS MAY BE MADE IN THE FIELD TO ACCOMMODATE UTILITY LOCATIONS. REPORT ALL CONFLICTS TO ENGINEER PRIOR TO PLANT INSTALLATION.
2. ALL PREVIOUSLY DISTURBED AREAS AND CURRENT DISTURBED AREAS ARE TO BE LOAMED AND SEEDED AS SPECIFIED, AND BLENDED INTO EXISTING GRADES AND CONDITIONS. ALL AREAS NOT COVERED BY PLANTING BEDS SHALL BE LOAMED AND SEEDED WITH LAWN SEED MIX.
3. THE ENGINEER RESERVES THE RIGHT TO INSPECT PLANT MATERIALS AND PLANT INSTALLATION AT ANY TIME TO INSURE THAT DESIGN AND SPECIFICATIONS ARE ADHERED TO.
4. THE LANDSCAPE CONTRACTOR IS RESPONSIBLE FOR VERIFICATION OF ALL QUANTITIES. ANY DISCREPANCY SHALL BE BROUGHT TO THE ATTENTION OF THE ENGINEER; HOWEVER, IT IS THE CONTRACTOR'S RESPONSIBILITY TO PROVIDE ALL MATERIALS AS SHOWN ON THE PLAN.
5. ALL PLANT STOCK SHALL CONFORM TO ANSI Z260.1 - NURSERY STOCK, LATEST EDITION (AMERICAN ASSOCIATION OF NURSERYMEN, INC.).
6. LANDSCAPE CONTRACTOR SHALL HAVE A COPY OF THE ENTIRE BID SET.
7. LANDSCAPE CONTRACTOR SHALL OBTAIN A CERTIFIED SOIL ANALYSIS PRIOR TO ANY PLANT INSTALLATION TO DETERMINE ANY NECESSARY AMENDMENTS TO THE EXISTING SOIL CONDITIONS FOR SEEDING AND PLANTING. THE ANALYSIS IS REQUIRED FOR ESTABLISHING THE FERTILIZER PROGRAM.
8. ALL BEDS WITH DAYLILLIES SHALL BE UNDERPLANTED WITH DAFFODILS AT 8" O.C.
9. ALL PLANT MATERIAL IS HARDY FOR ZONE 5.
10. SEE SHEET D6 FOR PLANT SCHEDULE.

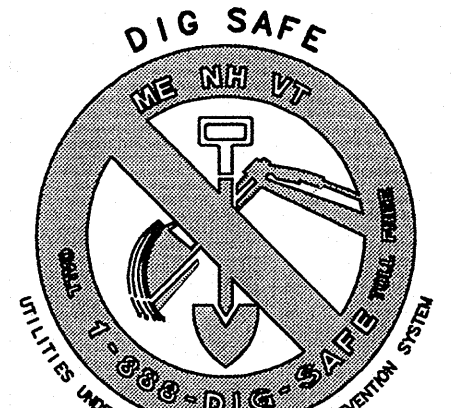
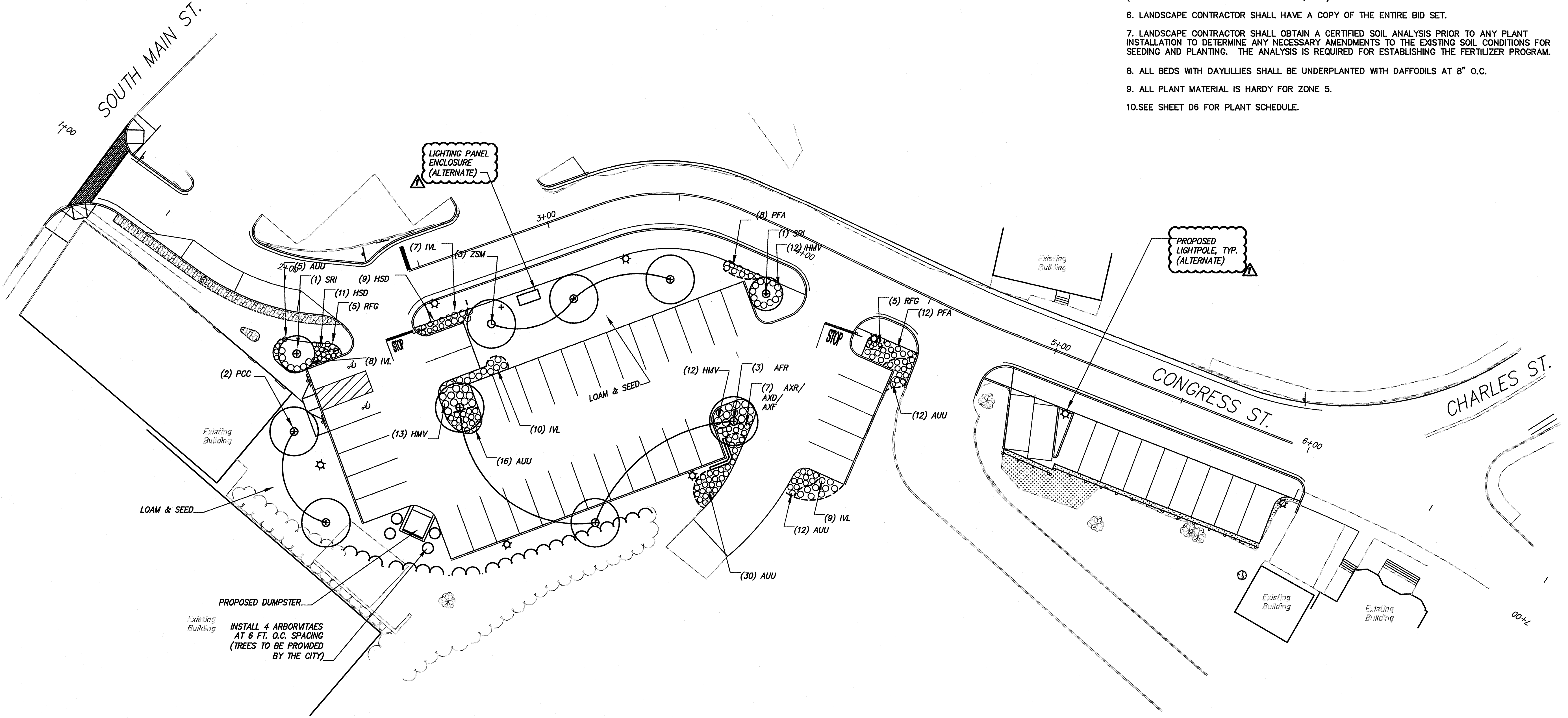
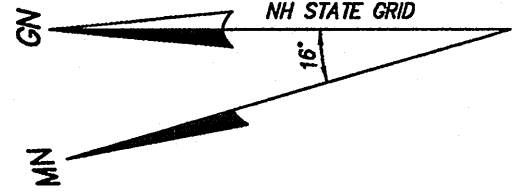
REVISED NOTES		DESIGNED		CHECKED		APPROVED	
NO.	DATE	REVISION	DATE	REVISION	DATE	REVISION	DATE
1	10/07						
DRAWN: BDB		DESIGNED: ELL		CHECKED: DAL		APPROVED: DAL	



CITY OF ROCHESTER
31 WAKEFIELD STREET
ROCHESTER, NH

CONGRESS STREET
IMPROVEMENTS
ROCHESTER, NEW HAMPSHIRE
LANDSCAPE AND
LIGHTING PLAN

SCALE: 1"=20'	JOB NO. 05-0123
DATE: MAY 2007	DWG. C5 6 OF 13



CONTACT DIG SAFE 72 HOURS PRIOR TO CONSTRUCTION
THE LOCATION OF ANY UTILITY INFORMATION SHOWN ON THIS PLAN IS APPROXIMATE. CLD ENG. INC. MAKES NO CLAIM TO THE ACCURACY OR COMPLETENESS OF UTILITIES SHOWN. 72 HOURS PRIOR TO ANY EXCAVATION ON SITE, THE CONTRACTOR SHALL CONTACT DIG-SAFE AT 1-888-DIG-SAFE.

