

63 PICKERING ROAD HEADWORKS UPGRADE

NH DES SRF PROJECT NO. CS 330122-11

ROCHESTER, NH

ADDENDUM NO. 1

To be considered as part of the contract drawings and specification for the 63 Pickering Road Headworks Upgrade Project.

SPECIFICATIONS

SECTION A-2.1 (SRF) - INFORMATION FOR BIDDERS

DELETE the first paragraph of the specification section and **REPLACE** with the following:

BIDS will be received by The City of Rochester, New Hampshire (herein called the "OWNER"), at 31 Wakefield Street, Rochester, NH 03867 until 2:15 pm (Local Time) on March 31, 2011 at the Office of the Purchasing Agent and then opened and read aloud at City Council Chambers at 2:30 pm EST on that same day.

SECTION D.7.1 (SRF) - INFORMATION FOR BIDDERS

DELETE Section D-7.1 in its entirety and **REPLACE** with the attached revised Section D-7.1, Federal Wage Rates.

SECTION 01200 – PROJECT MEETINGS

In Section 2.0, first paragraph, **DELETE** the word “weekly” and **REPLACE** with “monthly”.

SECTION 11129 – TRAVELING RAKE MECHANICALLY CLEANED SCREEN

1. In Section 1.01.D.3, **ADD** the following after the second sentence:

“The intent of this specification is to set performance based criteria for the screening equipment specified herein. Only manufacturers that meet the performance requirements of this specification will be accepted.”

2. In Section 1.02.B, **DELETE** “The Engineer and/or Owner reserve the right to be present to witness the passivation process as specified in Section 2.02” and **REPLACE** with “The Engineer and/or Owner shall witness the passivation process as specified in Section 2.02”

3. In Section 1.02.B, **ADD** the following at the end of the first paragraph:

“The cost for the OWNER and ENGINEER to observe the passivation shall be provided at no additional cost to the OWNER. The supplier for the equipment specified herein shall include all expenses necessary for transportation, food and lodging for two (2) representatives to observe the passivation process. A minimum of four (4) days of expenses shall be included between departure from the project site and return to the project site, and travel expenses shall include all costs from the project site and return to the project site.”

4. In Section 1.02.B, add the following at the end of the second paragraph:

“The cost for the OWNER and ENGINEER to observe the factory test shall be provided at no additional cost to the OWNER. The supplier for the equipment specified herein shall include all expenses necessary for transportation, food and lodging for two (2) representatives to observe the factory tests. A minimum of four (4) days of expenses shall be included between departure from the project site and return to the project site, and travel expenses shall include all costs from the project site and return to the project site.”

5. In Section 1.02.E, **DELETE** “A five year 100 parts.....” and **REPLACE** with, “A five year 100% parts.....”

6. **ADD** the following after Section 2.04.K:

“L. Level Instrumentation

The screen manufacturer shall provide LE-100-1 and LE-100-2 each of which shall be ultrasonic level measurement device with level element and 4-20 mA transmitters. The devices shall measure the liquid level up and down stream of the screen and actuate the screen based on a preset, user settable differential level. The screen shall continue to operate until the liquid level differential has returned to a user settable value.

The screening manufacturer shall also provide LS-100-1, which shall be a liquid level float switch and shall activate the screen and trigger a high level alarm when actuated. The screen shall continue to operate until the alarm condition is satisfied.

7. In Section 2.05.C, **DELETE** the second paragraph in entirety and replace with the following:
“A single local control panel, CS 101 shall be provided adjacent to the wash press to provide local control of the screen and wash press. The panel shall be NEMA 7 rated and contain the controls as described later in this Section.”

8. In Section 2.05.C. **DELETE** the wording, “Refer to Specification Section 11633 for the requirements of CS 103” and **REPLACE** with, “Refer to Specification Section 11633 for additional requirements of CS 101 for wash press operation”

SECTION 11633 – SCREENINGS WASHING AND COMPACTING EQUIPMENT

1. In Section 2.03.B, **ADD** the following at the end of this subsection:

“Each unit control panel shall be provided with a HAND-OFF-AUTO switch. In automatic mode, the units shall be activated by an external control signal (contact closure). At the loss of the external control signal the unit shall switch off, after a period determined by a 0-5 minute timer. The swirling device in the washing compartment shall be allowed to stop and start periodically in the on mode or operating mode. The stop and start shall be controlled by an adjustable 0 - 5 minute swirling device run timer and an adjustable 0 - 1 minute swirling device dwell timer. The dewater screw shall not be influenced by these timers.”

2. **DELETE** the first paragraph of Section 2.03.C.1 in its entirety and **REPLACE** with the following:

In addition to the requirements of Specification Section 11129 for CS 101, the following shall also be provided:

Emergency Stop Push Button

Hand – Off – Remote selector switch. In Hand mode, the wash press will be energized and operate. In Remote mode, control shall be via UCP 100.

3. **DELETE** the second paragraph of Section 2.03.C.1 in its entirety.

SECTION 16000 – GENERAL REQUIREMENTS FOR ELECTRICAL WORK

On page 16000-24, **DELETE** *“Provide ground grid components of #4/0 AWG bare copper conductors connected to 10-foot ground rods installed at the four corners of a building, an equipment pad, or as shown on the Drawings. Provide UFER, concrete-encased electrodes per NEC 250.52(3), by embedding conductors in concrete near bottom of footing.”*

SECTION 17000 – GENERAL REQUIREMENTS FOR INSTRUMENTATION AND CONTROL

In section 1.01.C.8, **ADD** the following billing rate schedule:

CDM Process Instrumentation & Control Services:

Hourly Rate: \$81.73

Expenses: at CDM Cost

DRAWINGS

SHEET P-2

1. **MODIFY** P&ID per the attached Sketch (no. 1) for Generator I/O

2. **ADD** Key Note as Follows:

“PROVIDE A SYSTEM FOR WIRELESS TRANSMISSION OF STATUS OF GENERATOR RUN STATUS AND GENERATOR GENERAL ALARM CONTACTS FROM THE GENERATOR BUILDING TO PUMP BUILDING. THIS WORK SHALL INCLUDE THE FOLLOWING:

- *PROVIDE PROGRAMMING TO PLC AND SCADA FOR DISCRETE INPUT POINTS FOR GENERATOR RUN STATUS AND GENERATOR GENERAL ALARM.*
- *PROVIDE A COMPLETE AND OPERABLE SYSTEM FOR THE WIRELESS TRANSMISSION OF THE GENERATOR RUN STATUS AND GENERAL ALARM POINTS FROM THE GENERATOR BUILDING TO THE PUMP BUILDING. SYSTEM SHALL INCLUDE TRANSMITTER/RECEIVER UNITS, ANTENNAS MOUNTED ON BUILDING EXTERIORS IN A LINE-OF-SIGHT ARRANGEMENT, TWO 120 VAC – 24 VDC POWER SUPPLIES, SURGE PROTECTION ON CABLE BETWEEN ANTENNAS AND TRANSMITTER/RECEIVERS UNITS, AND ALL NECESSARY CABLES AND ADAPTORS. PROVIDE WIRELESS MUX SET (PHOENIX CONTACT NO. 2884509 OR APPROVED EQUAL) WITH POWER SUPPLIES (PHOENIX CONTACT NO. 2938578 OR APPROVED EQUAL), SURGE SUPPRESSORS (PHOENIX CONTACT NO. 2838490 OR APPROVED EQUAL), AND ALL NECESSARY APPURTENANCES INCLUDING CABLES, ADAPTORS AND PIGTAILS TO PROVIDE A COMPLETE AND OPERABLE SYSTEM. PROVIDE NEMA 12 CABINETS AT EACH LOCATION TO HOUSE TRANSMITTER/RECEIVER UNITS, POWER SUPPLIES AND RELATED DEVICES*
- *PROVIDE FIELD WIRING AS SHOWN ON DRAWING E2 AND AS REQUIRED BY WIRELESS SYSTEM VENDOR.”*

SHEET M-1

ADD Note 3 as follows:

“Provide a 1-inch Type L copper water connection, with ball valve for isolation and tee for connection to potable water system to provide wash water to the washpress (WAP). Install three solenoid valves (to be provided by the wash press manufacture)r and provide three ball valves, to be provided by the Contractor for solenoid valve isolation. Provide a total of three tee fittings

to each ball valve/solenoid valve configuration. Total pipe length is 75 feet and shall be included in the lump sum bid amount."

SHEET E-2

1. **ADD** Pump Building and Generator Building one-line diagrams per attached Sketch No. 2.
2. Key Note 6 **CLARIFICATION**: No ductbank shown on C-1. Instead Refer to attached Reference Drawing (CDM Sheet No. E-1, July 1983) for site plan showing ductbank routes. Suggested route from Operations Building to Pump Station Building is via Ductbanks Section 4/E-1, Section 2/E-1 and Section 1/E-1. Bidder shall bid wiring lengths based on that route. Contactor shall field verify available conduits in this ductbank system and submit proposed route for review prior to beginning work.

3. **ADD** Key Notes 12 -14 as follows:

12. MUX SYSTEM: PROVIDE NEMA 12 ENCLOSURES TO HOUSE TRANSMITTER/RECIEVER, POWER SUPPLY AND RELATED DEVICES. REFER TO DRAWING P-2 FOR ADDITIONAL REQUIREMENTS.

13. PROVIDE EMPTY CONDUIT FOR CABLE TO ANTENNA MOUNTED ON BUILDING EXTERIOR

14. PROVIDE 20 AMP/1P CIRCUIT BREAKERS IN 120 VAC PANELBOARDS IN GENERATOR BUILDING AND PUMP BUILDING FOR 120VAC POWER TO WIRELESS TRANSMITTER POWER SUPPLIES. FIELD VERIFY PANELBOARD LOCATIONS AND SUBMIT PROPOSED CIRCUITS FOR REVIEW PRIOR TO BEGINNING WORK.

SHEET E-6

ADD General Note D as follows:

"D. PROVIDE WIRING FOR GENERATOR CONTACT MONITORING PER DRAWING E2. REFER TO DRAWING P2 FOR ADDITIONAL REQUIREMENTS.

SHEET E-7

DELETE Note 3 in its entirety and **REPLACE** with the following:

"ROUTE POWER AND SIGNAL WIRING FROM NEW FLOW METER TO PANELBOARD AND PLC CABINET LOCATED ON FIRST FLOOR. ROUTE (2) # 12, (1) # 12 GND, 3/4" C TO PANELBOARD FOR 120 VOLT POWER AND (2) # 16 TSP, 3/4" C TO PLC CABINET FOR SIGNAL WIRING. FIELD VERIFY EXISTING PANELBOARD AND PLC CABINET

LOCATIONS PRIOR TO BEGINNING WORK. CIRCUITS SHALL REPLACE EXISTING CIRCUITS FOR EXISTING FLOWMETER LOCATED IN VAULT IN DRIVEWAY. DISCONNECT EXISTING FLOW METER WIRING AND ABANDON IN PLACE. PROVIDE AN INSTRUMENT ON/OFF SWITCH WITH NEMA 4X ENCLOSURE FOR 120 V SUPPLY POWER. A TWO POSITION SELECTOR SWITCH RATED FOR 10 AMPS OR GREATER IS ACCEPTABLE."

END OF ADDENDUM 1

BY ORDER CITY OF ROCHESTER, NH

Section 7.1
Federal Wage Rates

H-1

General Decision Number: NH100030 02/18/2011 NH30

Superseded General Decision Number: NH20080030

State: New Hampshire

Construction Type: Heavy

County: Strafford County in New Hampshire.

HEAVY CONSTRUCTION PROJECTS

Modification Number	Publication Date
0	03/12/2010
1	03/26/2010
2	05/14/2010
3	02/18/2011

BOIL0029-006 10/01/2009

	Rates	Fringes
BOILERMAKER.....	\$ 32.14	26.6% + 8.96

* CARP0118-006 04/01/2010

	Rates	Fringes
Millwright		
Work on power plants,		
paper mills, breweries,		
nuclear power plants and		
detention facilities.....	\$ 24.72	15.66
All other work.....	\$ 24.72	15.66

Welding: \$1.00 per hour additional.

ENGI0004-021 12/01/2009

	Rates	Fringes
OPERATOR: Power Equipment		
Backhoe; crane and truck		
crane boom length		
including jib up to 150		
ft.; forklift.....	\$ 24.25	21.32
Bulldozer; mechanic.....	\$ 24.57	21.32
Crane and truck crane		
boom length including jib		
over 350 ft.....	\$ 29.55	21.32
Crane and truck crane boom		
length including jib over		
150 ft. up to 185 ft.....	\$ 25.70	21.32
Crane and truck crane boom		
length including jib over		
185 ft. up to 210 ft.....	\$ 26.57	21.32
Crane and truck crane boom		
length including jib over		
250 ft. up to 350 ft.....	\$ 28.35	21.32
Crane and truck crane,		
boom length including jib		
over 210 ft. up to 250 ft....	\$ 27.52	21.32

H-2

PAID HOLIDAYS: New Year's Day, President's Day, Memorial Day,
Fourth of July, Labor Day, Columbus Day, Veteran's
Day, Thanksgiving Day and Christmas Day.

SUNH2006-008 03/01/2006

	Rates	Fringes
Carpenter		
_includes form work.....	\$ 20.00	4.30
Laborer, general.....	\$ 16.17	4.32
Power equipment operators:		
_Excavator.....	\$ 20.00	6.13
_Front end loader.....	\$ 19.67	6.06
Truck driver, dump.....	\$ 14.10	2.21

WELDERS - Receive rate prescribed for craft performing
operation to which welding is incidental.

=====

Unlisted classifications needed for work not included within
the scope of the

classifications listed may be added after award only as
provided in the labor

standards contract clauses (29 CFR 5.5(a)(1)(ii)).

--

In the listing above, the "SU" designation means that rates
listed under the

identifier do not reflect collectively bargained wage and
fringe benefit

rates. Other designations indicate unions whose rates have
been determined

to be prevailing.

--

WAGE DETERMINATION APPEALS PROCESS

4-3

1.) Has there been an initial decision in the matter? This can be:

- * an existing published wage determination
- * a survey underlying a wage determination
- * a Wage and Hour Division letter setting forth a position on a wage determination matter
- * a conformance (additional classification and rate) ruling

On survey related matters, initial contact, including requests for summaries

of surveys, should be with the Wage and Hour Regional Office for the area in

which the survey was conducted because those Regional Offices have

responsibility for the Davis-Bacon survey program. If the response from this

initial contact is not satisfactory, then the process described in 2.) and

3.) should be followed.

With regard to any other matter not yet ripe for the formal process

described here, initial contact should be with the Branch of Construction

Wage Determinations. Write to:

Branch of Construction Wage Determinations

Wage and Hour Division

U.S. Department of Labor

200 Constitution Avenue, N.W.

Washington, DC 20210

2.) If the answer to the question in 1.) is yes, then an interested party

H-4

(those affected by the action) can request review and reconsideration from

the Wage and Hour Administrator (See 29 CFR Part 1.8 and 29 CFR Part 7).

Write to:

Wage and Hour Administrator
U.S. Department of Labor
200 Constitution Avenue, N.W.
Washington, DC 20210

The request should be accompanied by a full statement of the interested

party's position and by any information (wage payment data, project

description, area practice material, etc.) that the requestor considers

relevant to the issue.

3.) If the decision of the Administrator is not favorable, an interested

party may appeal directly to the Administrative Review Board (formerly the

Wage Appeals Board). Write to:

Administrative Review Board
U.S. Department of Labor
200 Constitution Avenue, N.W.
Washington, DC 20210

4.) All decisions by the Administrative Review Board are final.

General Decision Number: NH100006 01/21/2011 NH6

Superseded General Decision Number: NH20080006

B-1

State: New Hampshire

Construction Type: Building

County: Strafford County in New Hampshire.

Building construction projects (does not include single family homes and apartments up to and including 4 stories)

Modification Number	Publication Date
0	03/12/2010
1	03/26/2010
2	04/30/2010
3	05/07/2010
4	05/14/2010
5	05/21/2010
6	07/23/2010
7	10/22/2010
8	12/03/2010
9	01/21/2011

BOIL0029-005 10/01/2009

	Rates	Fringes
BOILERMAKER.....	\$ 32.14	26.6% + 8.96

CARP0118-002 04/01/2010		

	Rates	Fringes
CARPENTER (Including Drywall Hanging, Form Work, Scaffold Building; does not include Draperly Blind Installation and Hard Wood Floor Installation).....	\$ 24.72	15.66

Work on all designated hazardous material work sites, where the worker is in direct contact with hazardous material and when protective equipment is required for Levels A, B and C, as defined by the designated health and safety plan: 10% per hour additional.

Welding: \$1.00 per hour additional.

ELEC0490-001 01/01/2010

	Rates	Fringes
ELECTRICIAN.....	\$ 26.75	3% + 14.45

Work performed from scaffolding suspended by ropes or cables 30 ft. in the air: 10% per hour additional. Work requiring the wearing of a canister respirator: 10% per hour additional.

ENGI0004-020 12/01/2009

B-2

	Rates	Fringes
OPERATOR: Power Equipment		
GROUP 1.....	\$ 24.75	21.32
GROUP 1-A.....	\$ 25.70	21.32
GROUP 1-B.....	\$ 26.57	21.32
GROUP 1-C.....	\$ 27.52	21.32
GROUP 1-D.....	\$ 28.35	21.32
GROUP 1-E.....	\$ 29.55	21.32
GROUP 2.....	\$ 24.57	21.32
GROUP 2-A.....	\$ 25.53	20.62
GROUP 2-B.....	\$ 26.38	20.62
GROUP 2-C.....	\$ 27.31	20.62
GROUP 2-D.....	\$ 28.13	20.62
GROUP 2-E.....	\$ 29.31	20.62
GROUP 3.....	\$ 25.33	20.62

PAID HOLIDAYS:

New Year's Day, President's Day, Memorial Day, Fourth of July, Labor Day, Columbus Day, Veteran's Day, Thanksgiving Day and Christmas Day.

GROUP DEFINITIONS:

GROUP 1: Backhoe; crane, and truck crane, boom length (jib up to 150 ft.); excavator; forklift; front end loader (except when pushing)

GROUP 1-A: Crane, and truck crane, boom length (jib over 150 ft. up to 185 ft.)

GROUP 1-B: Crane, and truck crane, boom length (jib over 185 ft. up to 210 ft.)

GROUP 1-C: Crane, and truck crane, boom length (jib over 210 ft. up to 250 ft.)

GROUP 1-D: Crane, and truck crane, boom length (jib over 250 ft. up to 350 ft.)

GROUP 1-E: Crane, and truck crane, boom length (jib over 350 ft.)

GROUP 2: Bulldozer, mechanic, roller

IRON0007-009 09/16/2010

	Rates	Fringes
IRONWORKER (Reinforcing & Structural).....	\$ 20.37	19.37

PAIN0035-018 01/01/2010

	Rates	Fringes
DRYWALL FINISHER/TAPER		
New construction and power plants.....	\$ 24.47	13.41
Remodel.....	\$ 21.79	13.41
PAINTER (BRUSH & ROLLER)		

New construction and power plants.....	\$ 24.47	13.41
Repaint work.....	\$ 21.79	13.41

B-3

Drywall finisher:

Work using power vacuum, drywall sander, bazooka or box and wipers working behind them: \$1.40 per hour above the new construction rate.

 * PLAS0534-008 01/01/2011

	Rates	Fringes
CEMENT MASON/CONCRETE FINISHER...	\$ 30.50	23.34

 SHEE0017-013 07/01/2010

	Rates	Fringes
SHEET METAL WORKER (Including HVAC Duct Work).....	\$ 26.97	20.55

 SUNH2005-007 11/01/2005

	Rates	Fringes
Carpenters: _ (includes drapery blind installation and hardwood floor installation; does not include drywall hanging, form work and scaffold building)...	\$ 16.33	1.19
Laborer, general.....	\$ 11.91	.79
Pipefitter _ includes HVAC piping.....	\$ 19.65	6.39
Plumber.....	\$ 18.40	4.72

 WELDERS - Receive rate prescribed for craft performing operation to which welding is incidental.
 =====

Unlisted classifications needed for work not included within the scope of the classifications listed may be added after award only as provided in the labor standards contract clauses (29CFR 5.5 (a) (1) (ii)).

 In the listing above, the "SU" designation means that rates listed under the identifier do not reflect collectively bargained wage and fringe benefit rates. Other designations indicate unions whose rates have been determined to be prevailing.

WAGE DETERMINATION APPEALS PROCESS

B-4

1.) Has there been an initial decision in the matter? This can be:

- * an existing published wage determination
- * a survey underlying a wage determination
- * a Wage and Hour Division letter setting forth a position on a wage determination matter
- * a conformance (additional classification and rate) ruling

On survey related matters, initial contact, including requests for summaries of surveys, should be with the Wage and Hour Regional Office for the area in which the survey was conducted because those Regional Offices have responsibility for the Davis-Bacon survey program. If the response from this initial contact is not satisfactory, then the process described in 2.) and 3.) should be followed.

With regard to any other matter not yet ripe for the formal process described here, initial contact should be with the Branch of Construction Wage Determinations. Write to:

Branch of Construction Wage Determinations
Wage and Hour Division
U.S. Department of Labor
200 Constitution Avenue, N.W.
Washington, DC 20210

2.) If the answer to the question in 1.) is yes, then an interested party (those affected by the action) can request review and reconsideration from the Wage and Hour Administrator (See 29 CFR Part 1.8 and 29 CFR Part 7). Write to:

Wage and Hour Administrator
U.S. Department of Labor
200 Constitution Avenue, N.W.
Washington, DC 20210

The request should be accompanied by a full statement of the interested party's position and by any information (wage payment data, project description, area practice material, etc.) that the requestor considers relevant to the issue.

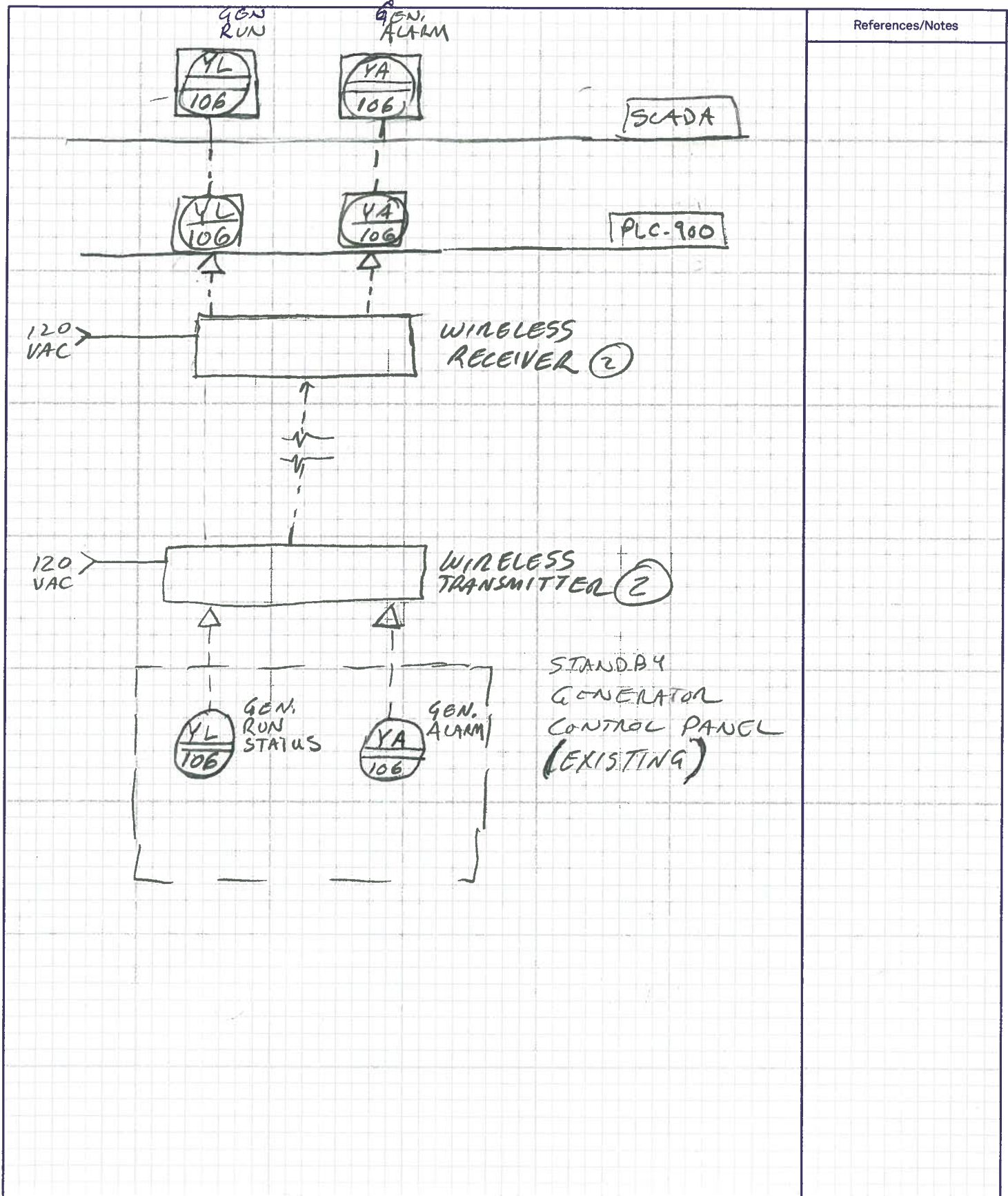
3.) If the decision of the Administrator is not favorable, an interested party may appeal directly to the Administrative Review Board (formerly the Wage Appeals Board). Write to:

Administrative Review Board
U.S. Department of Labor
200 Constitution Avenue, N.W.
Washington, DC 20210

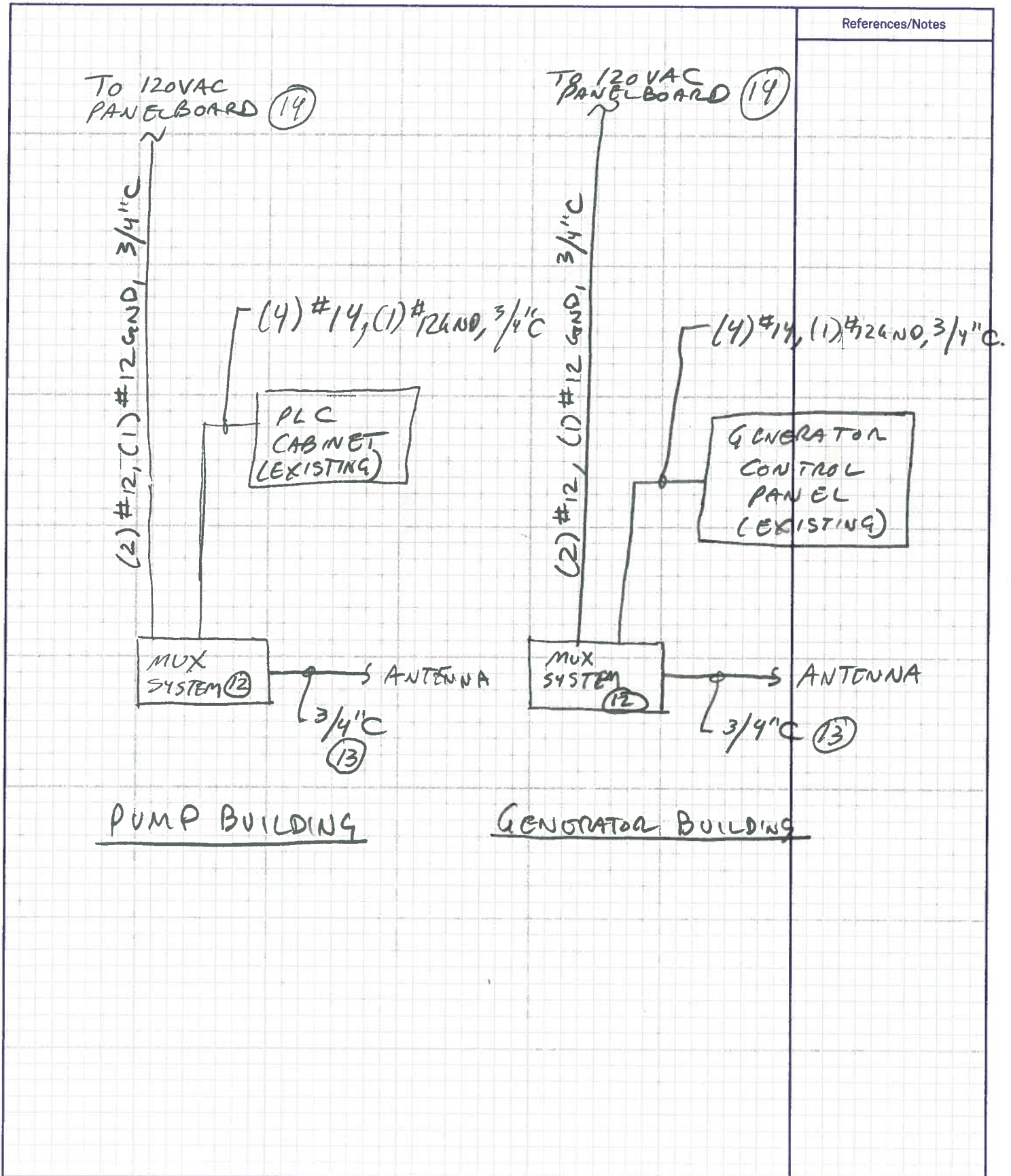
4.) All decisions by the Administrative Review Board are final.

=====
END OF GENERAL DECISION

Date Checked	Checked By	Job Number	By	Date	Calc. No.	Sheet No.
			RJA	3/18/11		
Project			Subject			
FOR DWG P2			(SKETCH No. 1)			

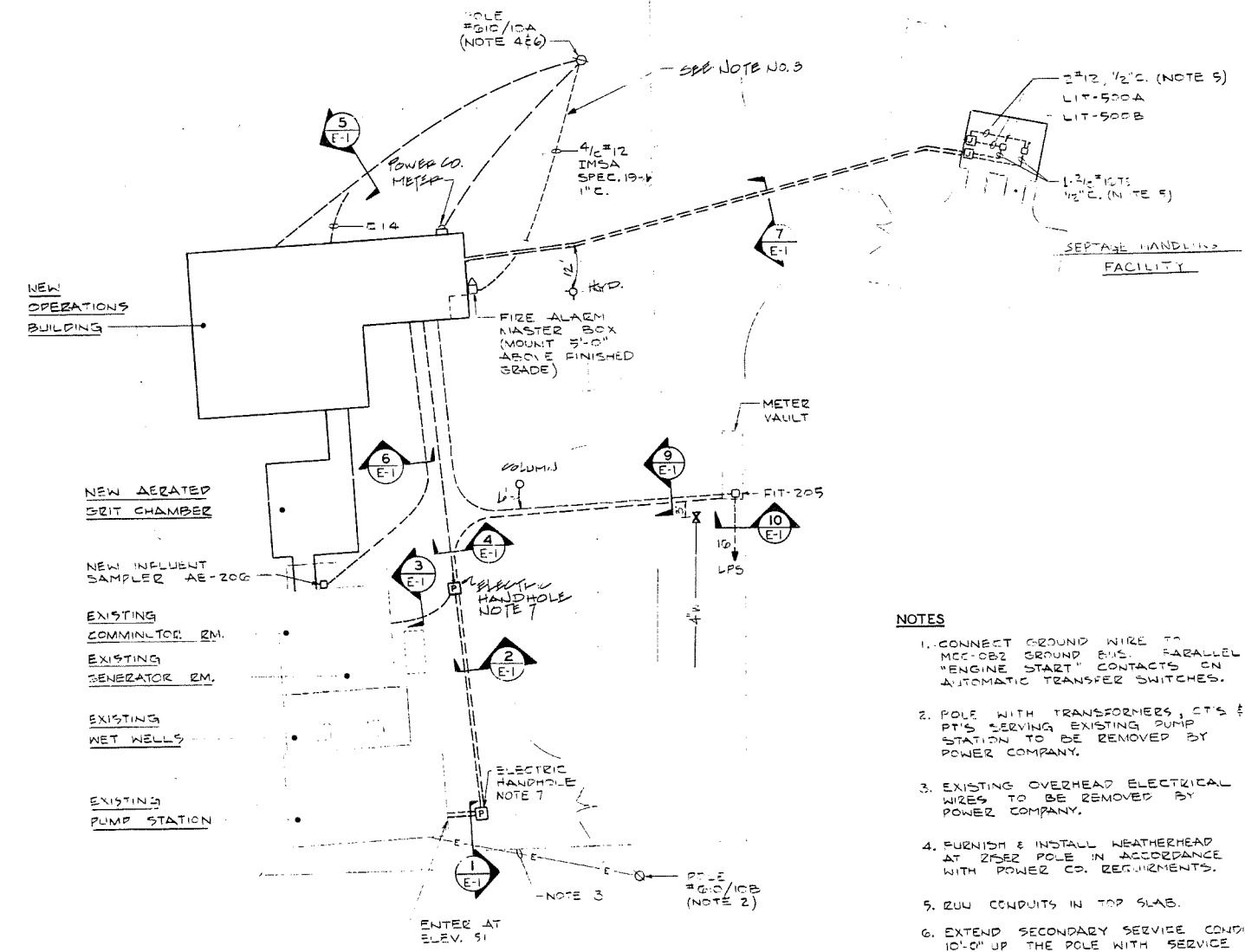
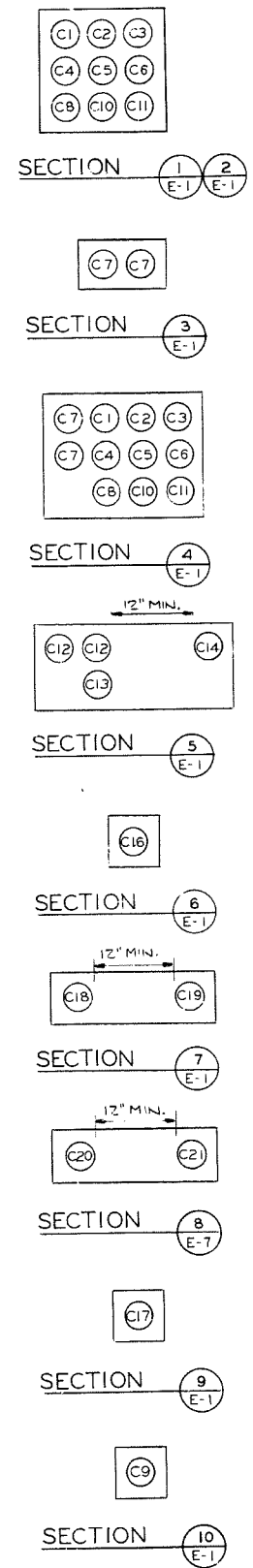
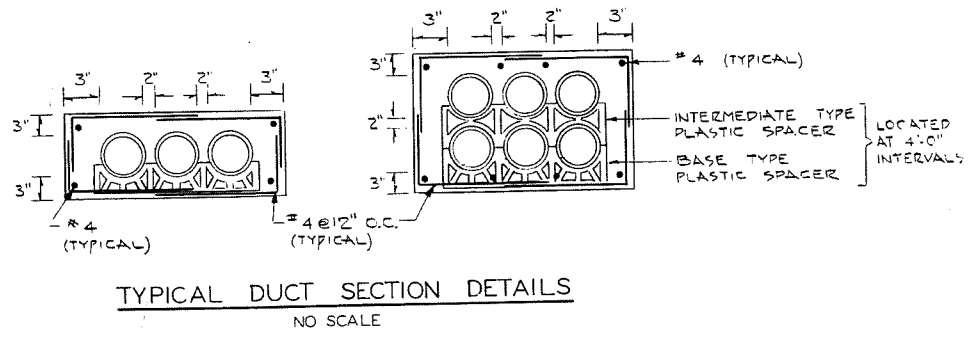


Date Checked	Checked By	Job Number	By	Date	Calc. No.	Sheet No.
Project			Subject			
FOR DWG. E2			(SKETCH NO. 2)			



PROJECT MANAGER: Approved by: Date: 10/2/95
PROJECT ENGINEER: Approved by: Date: 10/2/95
PLUMBING: Approved by: Date: 10/2/95
HVAC: Approved by: Date: 10/2/95
INSTRUMENTATION: Approved by: Date: 10/2/95
ELECTRICAL: Approved by: Date: 10/2/95
STRUCTURAL: Approved by: Date: 10/2/95
ARCHITECTURAL: Approved by: Date: 10/2/95

UNDERGROUND SYSTEM SCHEDULE							
CONDUIT NO.	CONDUCTORS QTY	CONDUIT SIZE	FROM	TO	FUNCTION	REMARKS	
C1	3 1 4	4 14 12	1 1/2"	MCC-OB1	MAIN SEWAGE PUMP N°1	POWER GROUND CONTROL SEAL WTR. SOL.	
C2	3 1 2	4 14 12	1 1/2"	MCC-OB2	MAIN SEWAGE PUMP N°2	POWER GROUND CONTROL SEAL WTR. SOL.	
C3	3 1 2	4 14 12	1 1/2"	MCC-OB1	MAIN SEWAGE PUMP N°3	POWER GROUND CONTROL SEAL WTR. SOL.	
C4	3 1 4	12 12 14	1"	MCC-OB2	NET WELL EXHAUST FAN	POWER GROUND CONTROL	
C5	3 1	12 12	1"	MCC-OB1	PUMP STATION	POWER GROUND	SPACE
C6	3 1	10 12	1"	MCC-OB2	PUMP STATION LIGHTING TRANSFORMER	POWER GROUND	
C7	3 1 2	300MCM 10 14	3"	MCC-OB2	GENERATOR ATS	POWER GROUND ENGINE START	SEE NOTE 1
C8	20 10	14 14	1 1/2"	CMP	JB-1 IN PUMP STATION	ALARM STATUS SPARES	
C9	2 1	12 12	1"	FIT-205	LIGHTING PANEL LPS	POWER GROUND	
C10			2"	MCC-OB1	PUMP STATION		SPACE
C11			2"	MCC-OB2	PUMP STATION		SPACE
C12	3 1	350MCM 20	3"	POWER CO. TRANSFORMER	MCC-OB1	POWER GROUND	SERVICE CONDUCTORS
C13			3"	POWER CO. RISER POLE	MCC-BB1 OR MCC-OB1		SPACE
C14			4"	TELEPHONE BACKBOARD "TM"	POWER CO. RISER POLE	TELEPHONE OPERATIONS BLDG	EMPTY
C15			4"	TELEPHONE BACKBOARD "TM"	POWER CO. RISER POLL	TELEPHONE BLOWER BLDG	EMPTY
C16	1-2 1/2"	1GTS	1"	INFLUENT SAMPLER AE-206	CMP	SIGNAL	
C17	1-2 1/2"	1GTS	1"	FIT-205	CMP	SIGNAL	
C18	1-2 1/2"	1GTS	1"	LIT-500A LIT-500B	CMP	SIGNAL	
C19	2 1	12 12	1"	LIT-500A LIT-500B	LIGHTING PANEL "LOB"	POWER GROUND	
C20	4 1	10 8	5"	LIGHTING PANEL "LSB"	LIGHTING PANEL "LSB"	POWER GROUND	
C21	1-2 1/2"	1GTS	1"	FIT-304	CMP VIA "MUX"	SIGNAL	
C22	2 1	12 12	1"	LIGHTING PANEL "LSB"	FIT-304	POWER GROUND	
C23	2-2 1/2"	1GTS	1"	FIT-304	AE-307	SIGNAL	
C24	5 1	300MCM 20	5"	POWER SERVICE TRANSFORMER	MCC-BB1	POWER GROUND	SERVICE CONDUCTORS



- NOTES
1. CONNECT GROUND WIRE TO MCC-OB2 GROUND BUS. PARALLEL "ENGINE START" CONTACTS ON AUTOMATIC TRANSFER SWITCHES.
 2. POLE WITH TRANSFORMERS, CTS & PT'S SERVING EXISTING PUMP STATION TO BE REMOVED BY POWER COMPANY.
 3. EXISTING OVERHEAD ELECTRICAL WIRES TO BE REMOVED BY POWER COMPANY.
 4. FURNISH & INSTALL WEATHERHEAD AT RISER POLE IN ACCORDANCE WITH POWER CO. REQUIREMENTS.
 5. RUN CONDUITS IN TOP SLAB.
 6. EXTEND SECONDARY SERVICE CONDUIT 10'-0" UP THE POLE WITH SERVICE CABLES EXTENDING TO A HEIGHT WHICH ALLOWS READY CONNECTION TO THE POWER COMPANY'S SERVICE. TURN UP SPACE CONDUIT & CAP AT POLE. TURN UP TELEPHONE CONDUIT & INSTALL BUSHING 1'-0" ABOVE FINISHED GRADE.
 7. SEE TYPICAL DETAIL ON SHEET E-7.
8. NEW FIRE ALARM CHART CONNECTED TO BROOK ST & RAILROAD TO THE EXIST. ROCHESTER FIRE DEPT. CHIEF.

RECORD DRAWING				CITY OF ROCHESTER, NEW HAMPSHIRE WASTEWATER TREATMENT FACILITIES	
CONTRACT NO. 2 MAPLE STREET OPERATIONS SITE SITE PLAN AND UNDERGROUND SCHEDULE				SHEET NO. E-1	
CAMP DRESSER & McKEE INC.				One Center Plaza Boston, Massachusetts 02108	
Designed by: RLM Drawn by: DWH Checked by: JWK Approved by: PWP				Date: JULY 1995 Scale: AS NOTED	
Date: Ch'd. Revision				environmental engineers, scientists, planners & management consultants	

