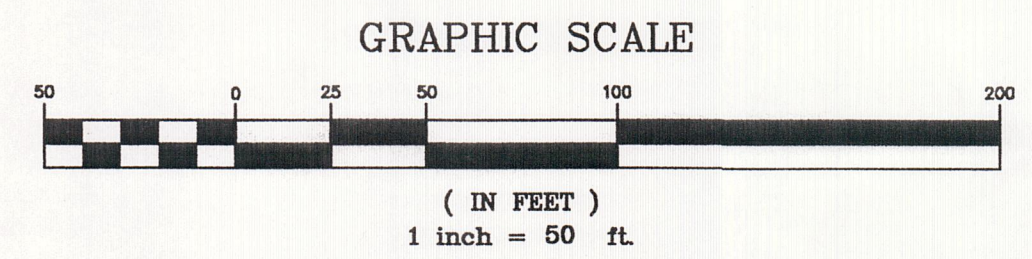
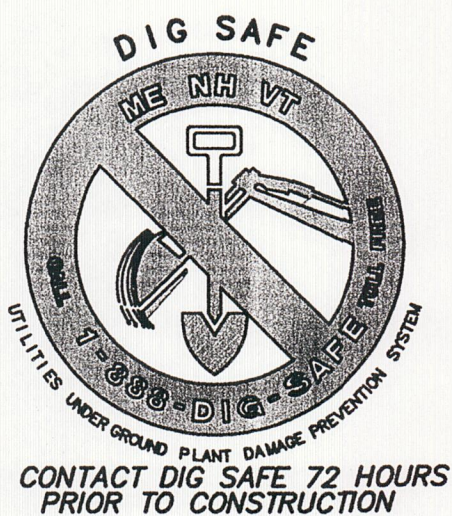
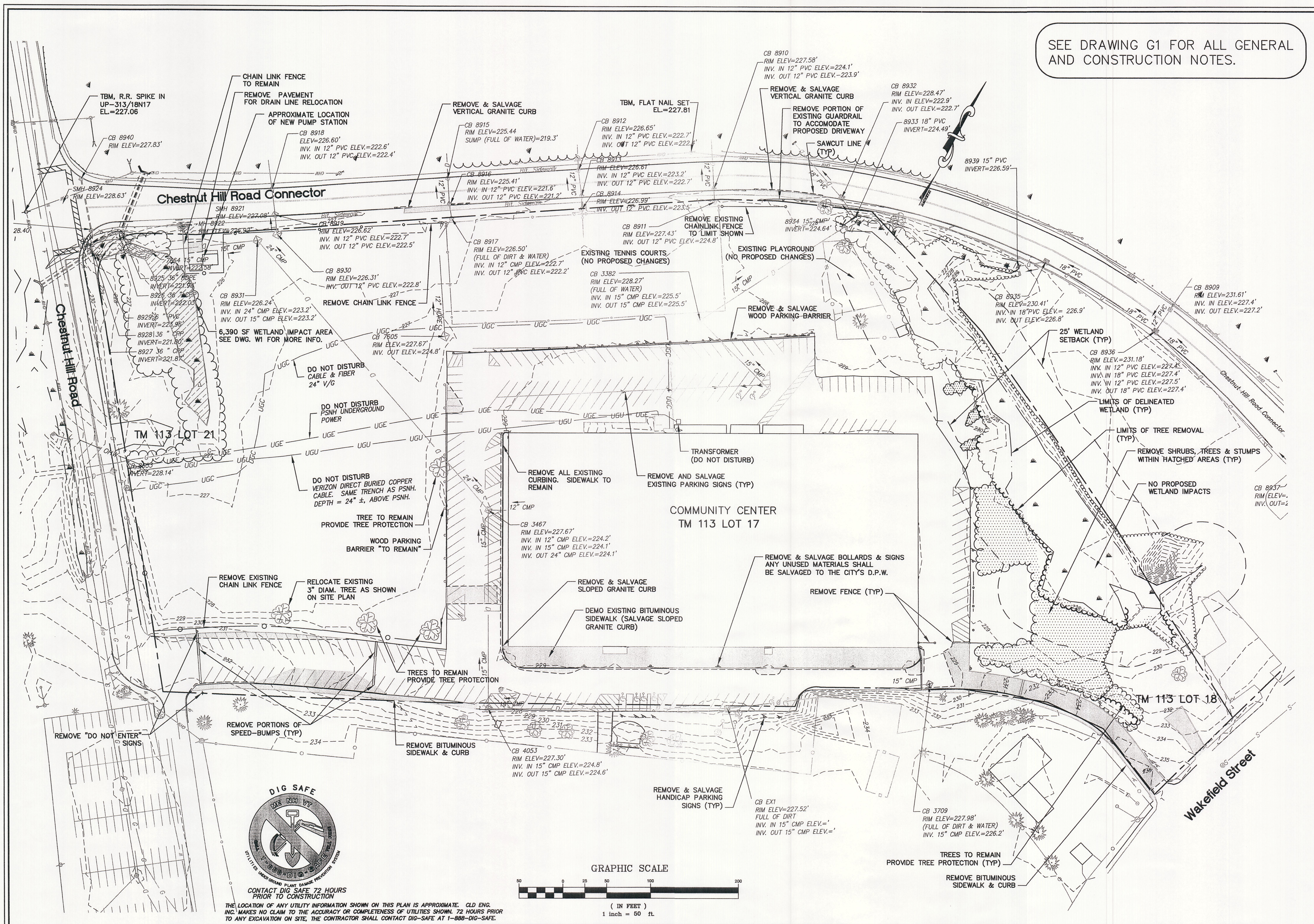


SEE DRAWING G1 FOR ALL GENERAL AND CONSTRUCTION NOTES.



NO.	DATE	REVISION	REV. ADDRESS
1	18/09/05	DESIGNED: ARS DRAWN: ARS	

**CONSULTING ENGINEERS** Inc.  
 540 Commercial Street-Manchester, NH 03101  
 (603) 666-8223-Fax: (603) 666-8902  
 ce@aldengineers.com www.aldengineers.com  
 Maine-New Hampshire-Vermont

STATE OF NEW HAMPSHIRE  
 ANY REBECCA SANDERS No. 11068  
 LICENSED PROFESSIONAL ENGINEER  
 8/8/05

CITY OF ROCHESTER  
 31 WAKEFIELD STREET  
 ROCHESTER, NH

CLIENT:  
 TM 113, LOTS 17, 18, & 21  
 ROCHESTER COMMUNITY CENTER  
 31 WAKEFIELD STREET  
 ROCHESTER, NH  
**EXISTING CONDITIONS & DEMOLITION PLAN**

SCALE: 1"=50'	JOB NO. 04-0133
DATE: 3/05	DWG. G1

APPROVED: \_\_\_\_\_  
 CHECKED: \_\_\_\_\_  
 DESIGNED: ARS  
 DRAWN: ARS