



**CITY OF ROCHESTER, NEW HAMPSHIRE
ADDENDUM
Historic Tax Credit Site Visit & Additional Floor Plans
January 2, 2019**

1. For bidders interested in historic tax credit information, there will be a site visit:

Who: Brandee Loughlin, National Register and Preservation Tax Incentives Coordinator

When: Monday January 7th 2019, 10:00 AM

Where: 10 + 12/14 North Main Street, Salinger Block and Scenic Theater, City of Rochester, New Hampshire

RSVP: Jennifer Murphy Aubin, City of Rochester, NH (603) 335-7522 or

Jennifer.Murphy.Aubin@RochesterNH.net

2. There are Salinger Block “drafts to scale” floor plans from 106 Associates, as part of the Historic Preservation Conditions Assessment.

3. Additional Scenic Theater Floor Plans from the City of Rochester, NH.

The City of Rochester, Office of Economic Development is accepting sealed Proposals for the Adaptive Reuse of Historic Buildings. The firm shall submit three (3) digital copies and ten (10) printed copies of the Conceptual, Technical and Financial Proposal in response to this **RFP by January 29, 2019.** All Proposals submitted must be in a sealed package plainly marked:

Adaptive Reuse of the Historic Buildings at 10 - 12/14 North Main Street

Office of Economic Development

RFP # 19-22

City of Rochester, New Hampshire, Purchasing Office

31 Wakefield St.

Rochester, NH 03867

Attn: Purchasing Agent

Submissions Due

Submit proposals no later than 2:15 PM EST, **January 29, 2019.**

The RFP bid opening will be at 2:30 PM EST.

ÿ For RFP specifications, visit: www.rochesternh.net/bids

ÿ To request a RFP copy or have questions, email: purchasing@rochesternh.net

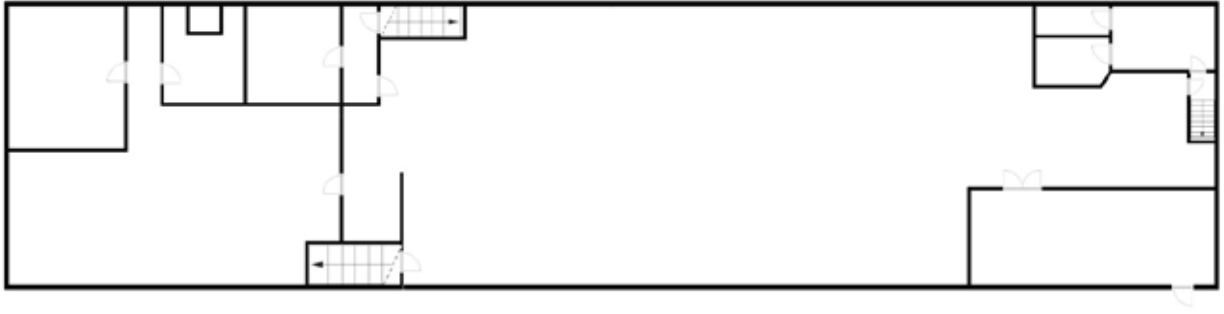
ÿ For addendum, updated information and Q&A, visit: www.rochesternh.net/purchasing

Contact: Purchasing Agent, City Hall, 31 Wakefield Street, Rochester, NH 03867, (603) 335-7602. All submittals must be made on the forms supplied and must be fully completed when submitted.

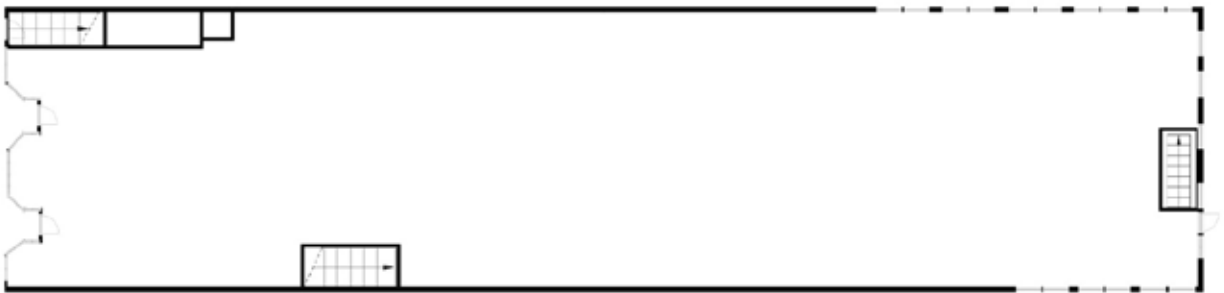
Late Qualification Proposals: Documents received after the scheduled closing time of filing are not accepted.

SALINGER BLOCK, “DRAFTS TO SCALE” FLOOR PLANS

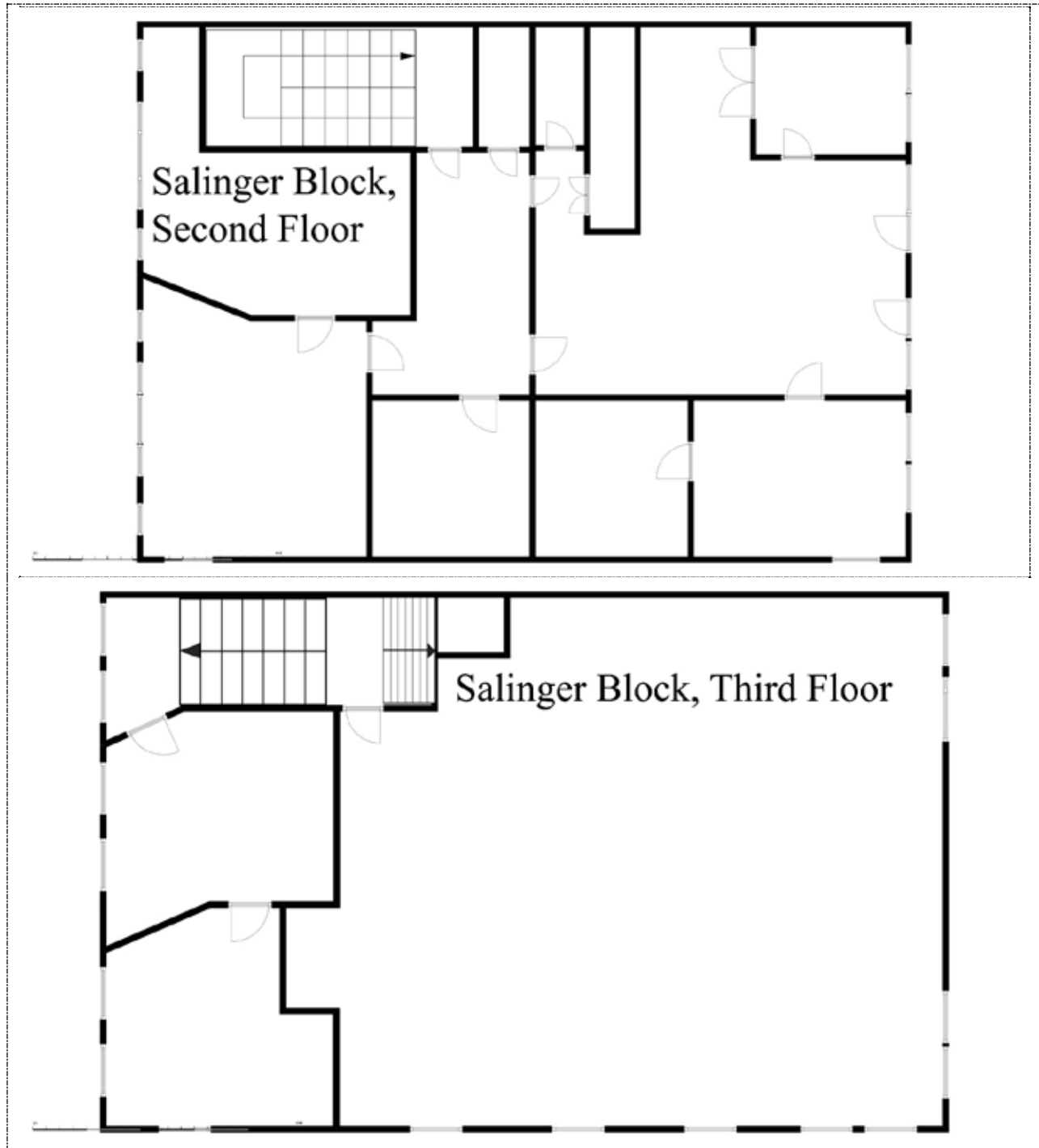
Salinger Block, Basement



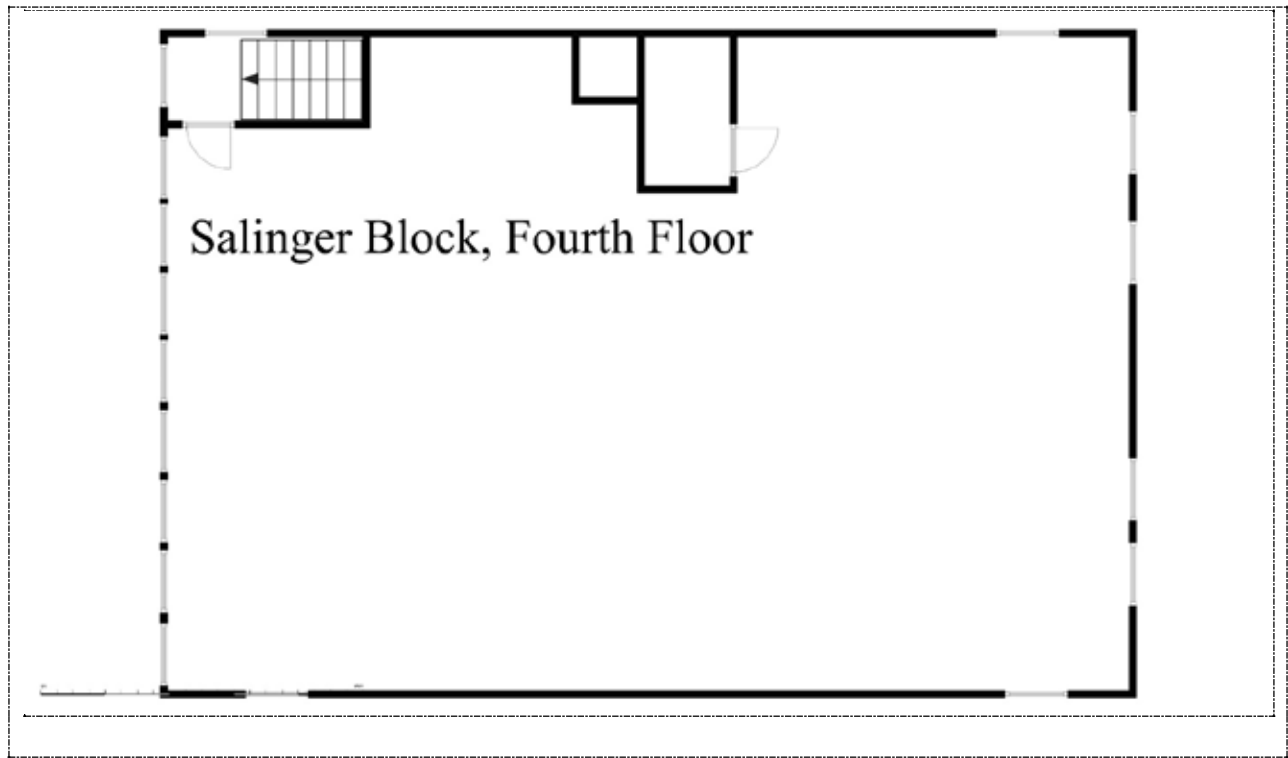
Salinger Block, Ground Floor

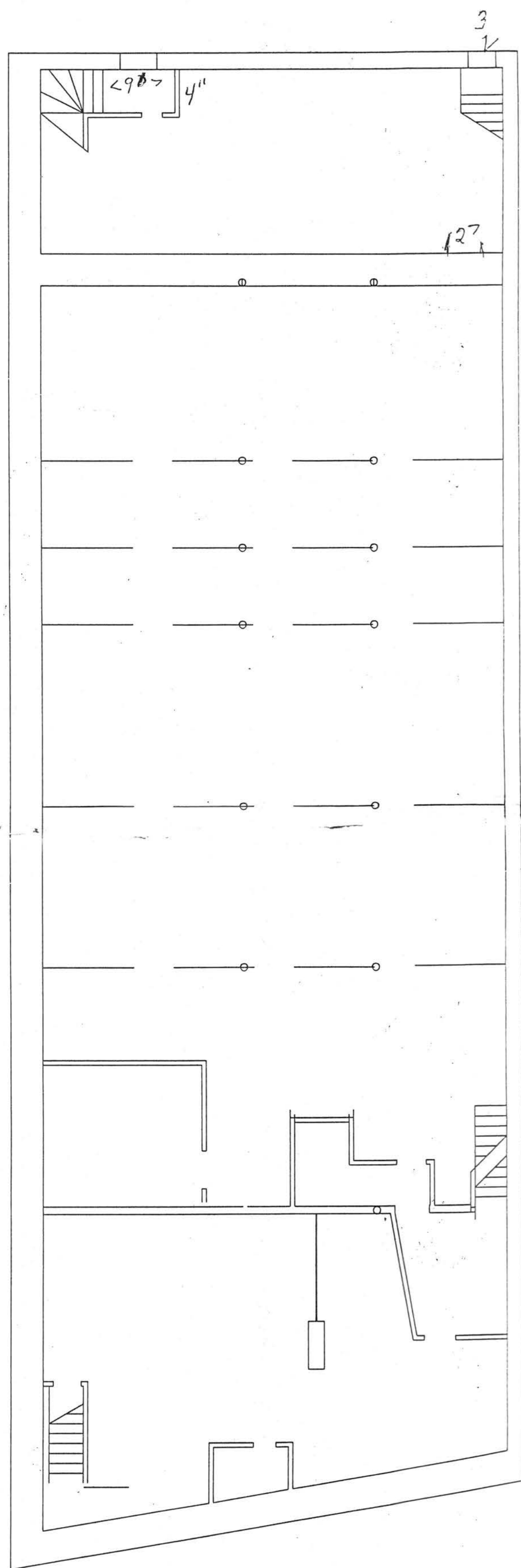


Adaptive Reuse of the Historic Buildings at 10 – 12/14 North Main Street Bid Package

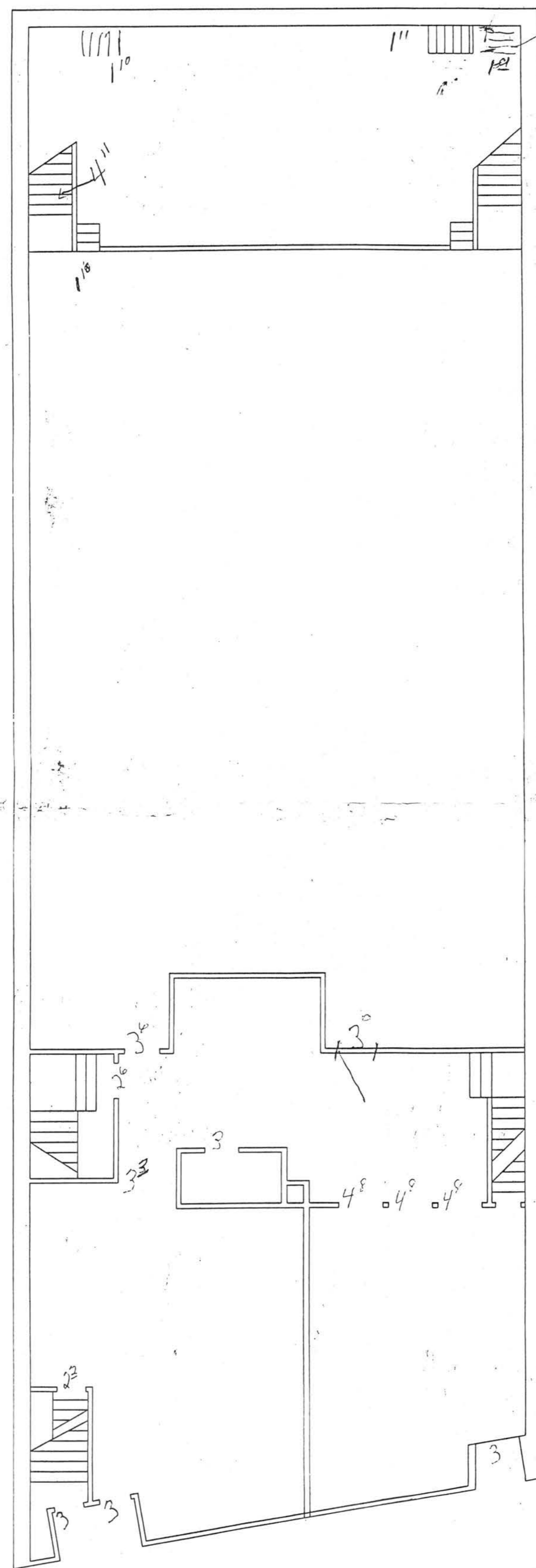


Adaptive Reuse of the Historic Buildings at 10 – 12/14 North Main Street Bid Package

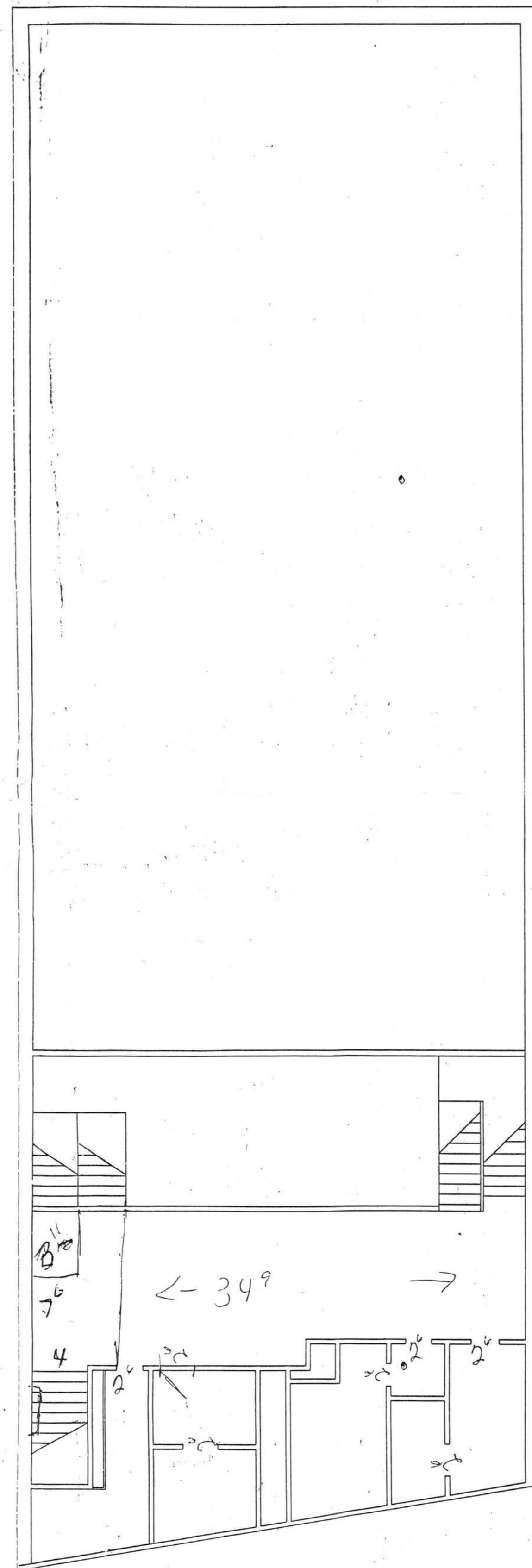




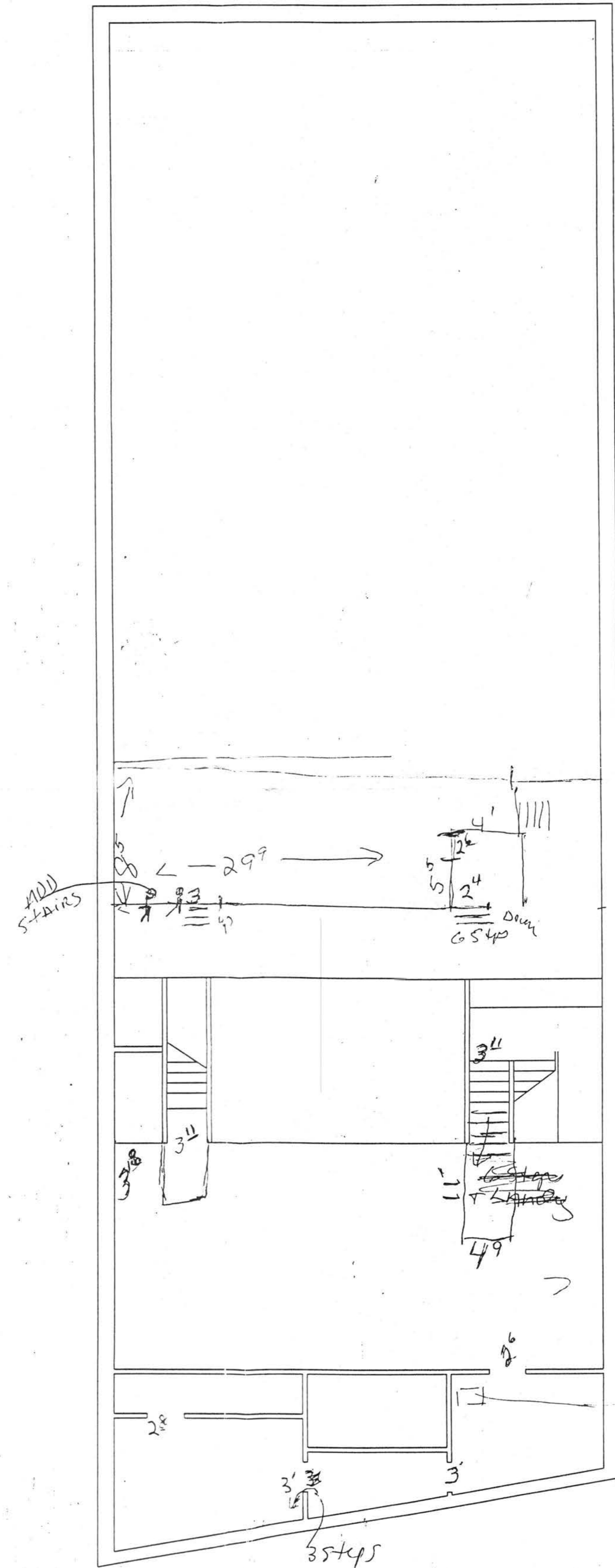
BASEMENT FLOOR PLAN
SCALE 1/8" = 1'-0"



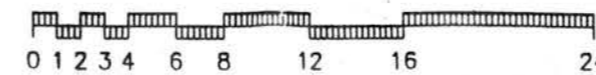
FIRST FLOOR PLAN
SCALE 1/8" = 1'-0"



1ST LEVEL MEZZ FLOOR PLAN
SCALE 1/8" = 1'-0"



2ND LEVEL MEZZ FLOOR PLAN
SCALE 1/8" = 1'-0"



ATLANTIC DESIGN RESOURCES LTD.

152 PORTSMOUTH AVENUE, STRATHAM, NH 03885
VOICE/ FAX 603-418-0764 e-mail asdr@conversant.net

P.M. SPLAINE

12 NORTH MAIN STREET
ROCHESTER, NEW HAMPSHIRE

SCENIC THEATER

12 NORTH MAIN STREET
ROCHESTER, NEW HAMPSHIRE

Revisions:	No	Date	By	Description

Scale: AS NOTED
Drawn By: RM
Checked By: RM
Approved By: RM
Project No: 207030
Issued: FOR REVIEW
Plot Date: SEE HEADER
File: 207030-FP-1
Dwg No.