

ROCHESTER, NEW HAMPSHIRE

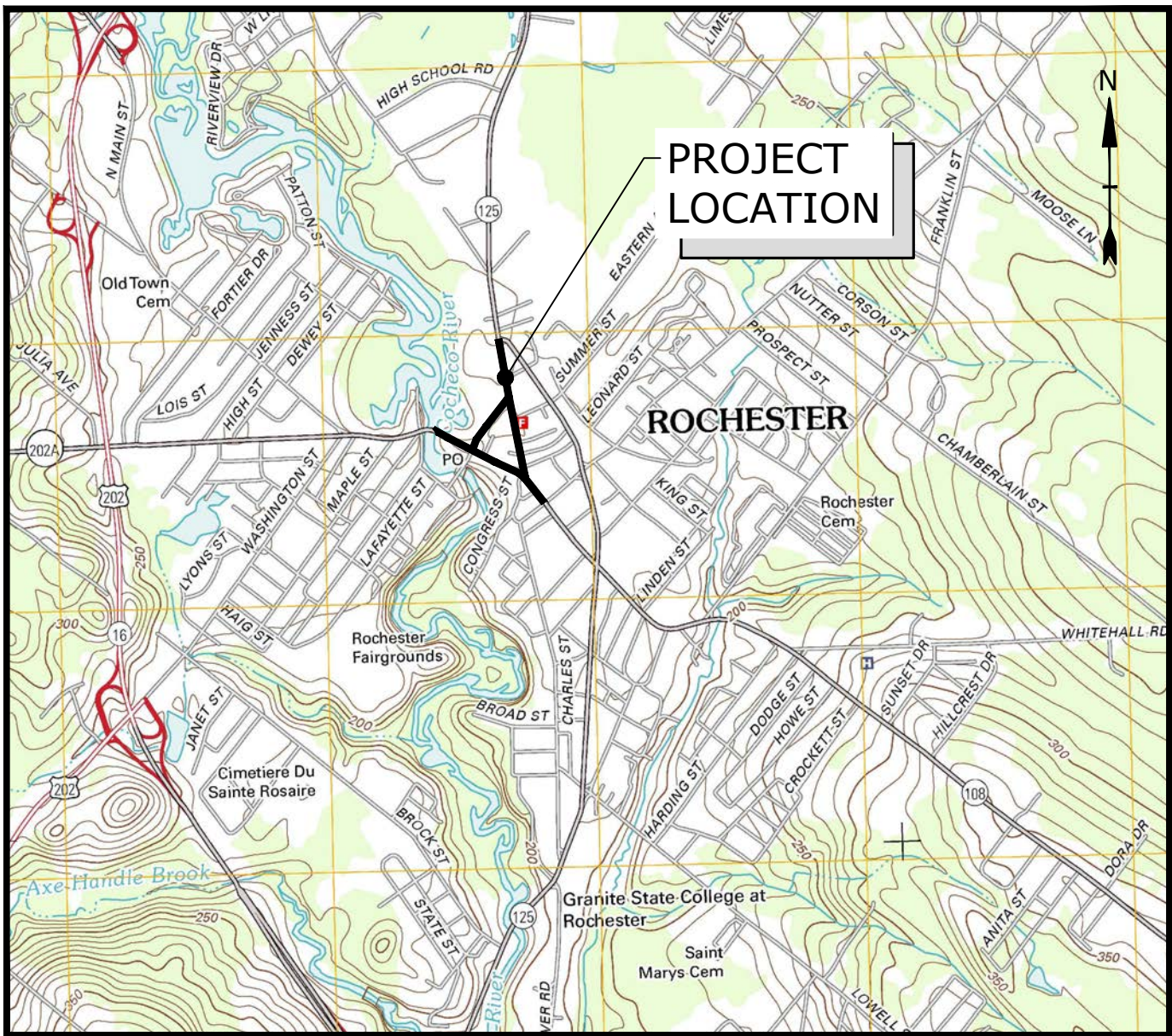
INFRASTRUCTURE IMPROVEMENTS

DOWNTOWN PAVEMENT RESURFACING

AND MARKING PROJECT

MARCH 20, 2018

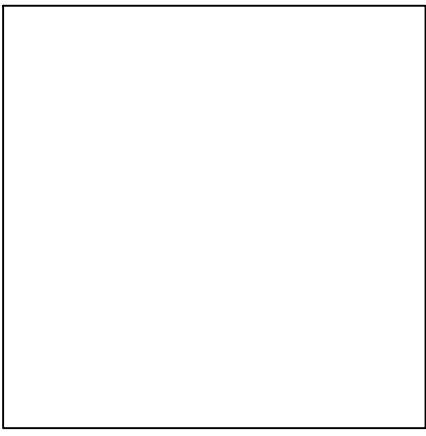
LIST OF DRAWINGS	
SHEET NO.	SHEET TITLE
--	COVER
C-101	GENERAL NOTES, LEGEND AND DETAILS SHEET
C-102	DETAILS SHEET
C-103	WAKEFIELD STREET PAVEMENT MARKING PLAN
C-104	NORTH MAIN STREET PAVEMENT MARKING PLAN
C-105	SOUTH MAIN ST. & UNION ST. PAVEMENT MARKING PLAN



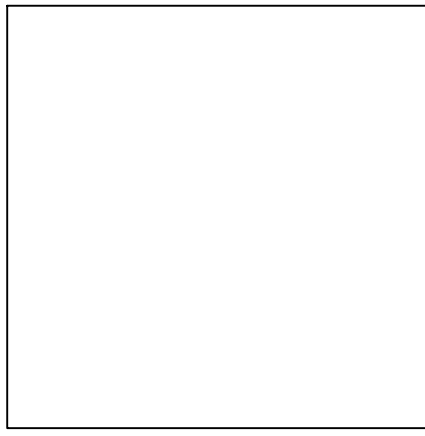
LOCATION MAP
SCALE: 1" = 2000'

PREPARED BY:

Tighe&Bond
www.tighebond.com
117 Corporate Drive
Portsmouth, NH 03801
(603) 433-8818



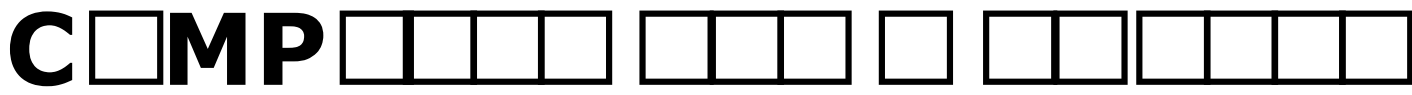
Bradlee L. Meiliata, P.E.

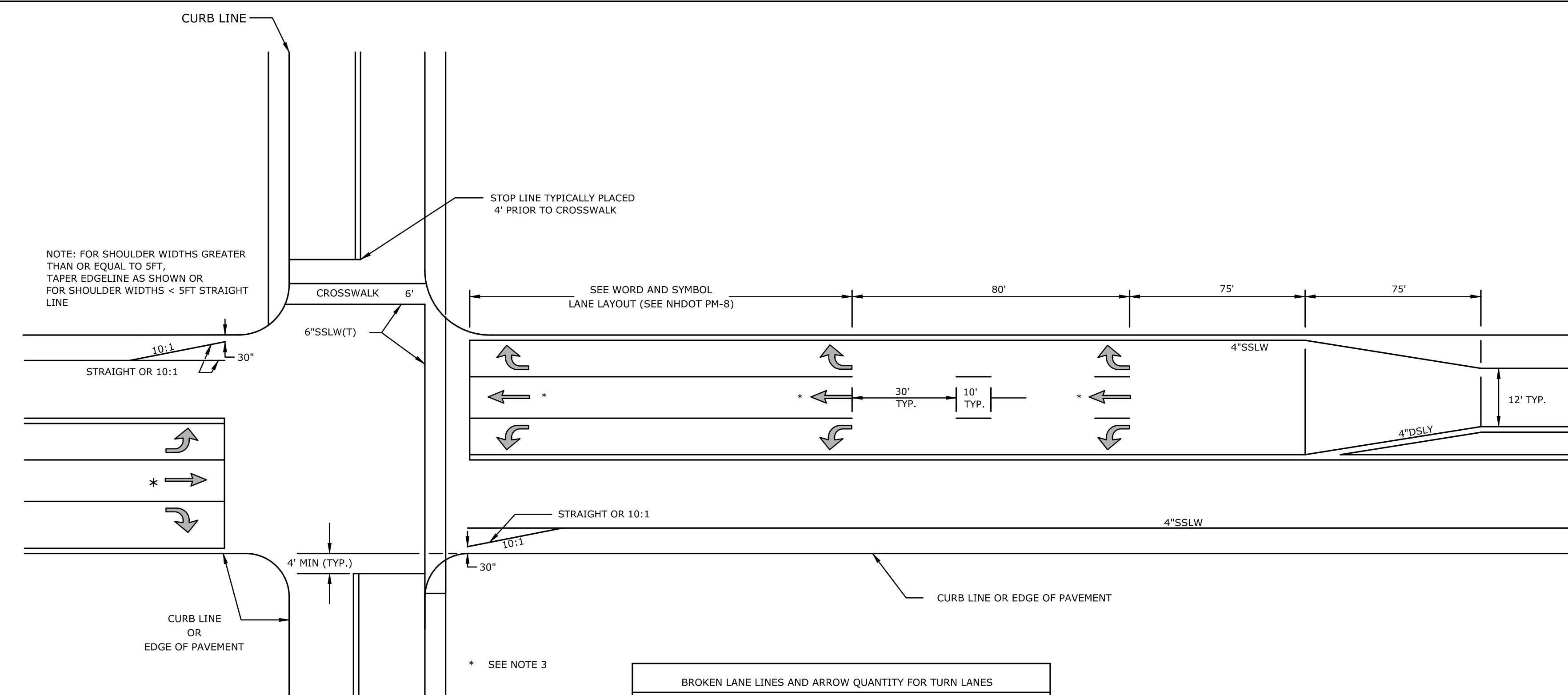


Kenneth A Mavrogeorge, P.E.

PREPARED FOR:

CITY OF ROCHESTER , NEW HAMPSHIRE
45 OLD DOVER ROAD
ROCHESTER, NH 03867



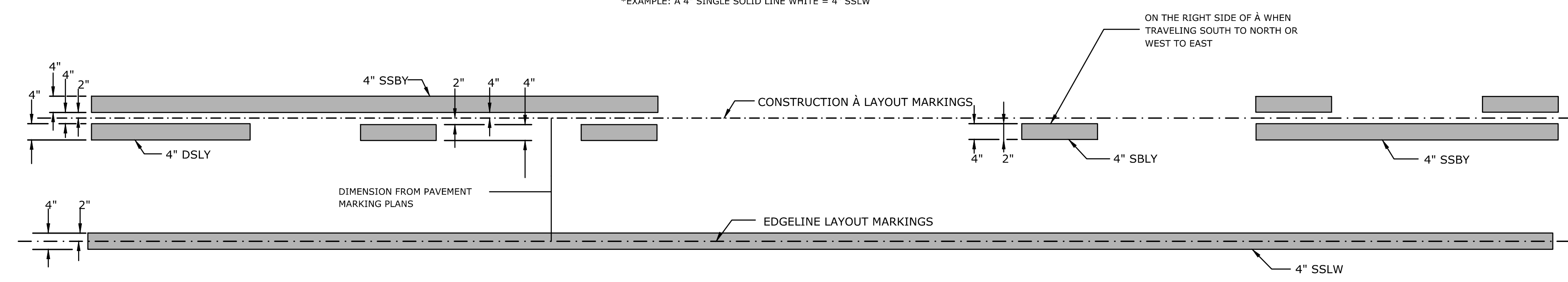


NOTE: FOR SHOULDER WIDTHS GREATER THAN OR EQUAL TO 5 FT, TAPER EDGELINE AS SHOWN OR FOR SHOULDER WIDTHS < 5 FT STRAIGHT LINE

- GENERAL NOTES**
1. PAINTED EDGELINE REQUIRED ON CURBED SHOULDERS GREATER THAN 24".
 2. STOP LINES ARE 18" WIDE SSLW(T).
 3. STRAIGHT THROUGH ARROWS AS REQUIRED, SEE THE PAVEMENT MARKING PLANS FOR THE APPROPRIATE LAYOUT.
 4. TRANSVERSE CROSSWALK LINES SHALL BE THERMOPLASTIC, NOT LESS THAN 6" WIDE AND NOT LESS THAN 6' APART.

BROKEN LANE LINES AND ARROW QUANTITY FOR TURN LANES		
TYPICAL B LAYOUT		
POSTED SPEED (mph)	BROKEN LINES	ARROWS
d 30	2	1

SSL(*) = SIZE IN INCHES SINGLE SOLID LINE (COLOR W=WHITE, Y=YELLOW)
 DSL(*) = SIZE IN INCHES DOUBLE SOLID LINE (COLOR W=WHITE, Y=YELLOW)
 SSB(*) = SIZE IN INCHES SINGLE SOLID W/ BROKEN LINE (COLOR W=WHITE, Y=YELLOW)
 SBL(*) = SIZE IN INCHES SINGLE BROKEN LINE (COLOR W=WHITE, Y=YELLOW)
 DBL(*) = SIZE IN INCHES DOUBLE BROKEN LINE (COLOR W=WHITE, Y=YELLOW)
 *EXAMPLE: A 4" SINGLE SOLID LINE WHITE = 4" SSLW



SIGN ID NUMBER	SIGN SIZE WIDTH x HEIGHT	SIGN	TEXT DIMENSIONS	NO. OF SIGNS	BACK-GROUND	LEGEND	BORDER	POST SIZE & QUANTITY	UNIT AREA	AREA (SQ. FT.)
R3-8(14)	30" x 30"		SEE STANDARD HIGHWAY SIGNS 2004 EDITION(W/2012 SUPPLEMENT) PUBLISHED BY USDOT - FHWA	1	WHITE	BLACK	BLACK	U-CHANNEL 1	6.25	12.50
R7-13	12" x 18"			9	WHITE	BLACK	BLACK	U-CHANNEL* 1	1.50	13.50
R3-8(125)	36" x 30"			1	WHITE	BLACK	BLACK	U-CHANNEL 1	7.50	7.50
W16-1	18" x 24"			5	WHITE	BLACK	BLACK	U-CHANNEL 1	3.00	15.00
R3-17	24" x 30"			7	WHITE	BLACK	WHITE	U-CHANNEL* 1	5.00	35.00

Preliminary Not For Construction

Infrastructure Improvements Downtown Pavement Resurfacing and Marking Project

City of Rochester

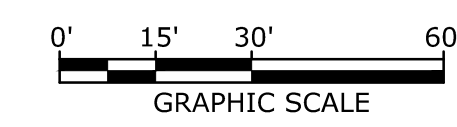
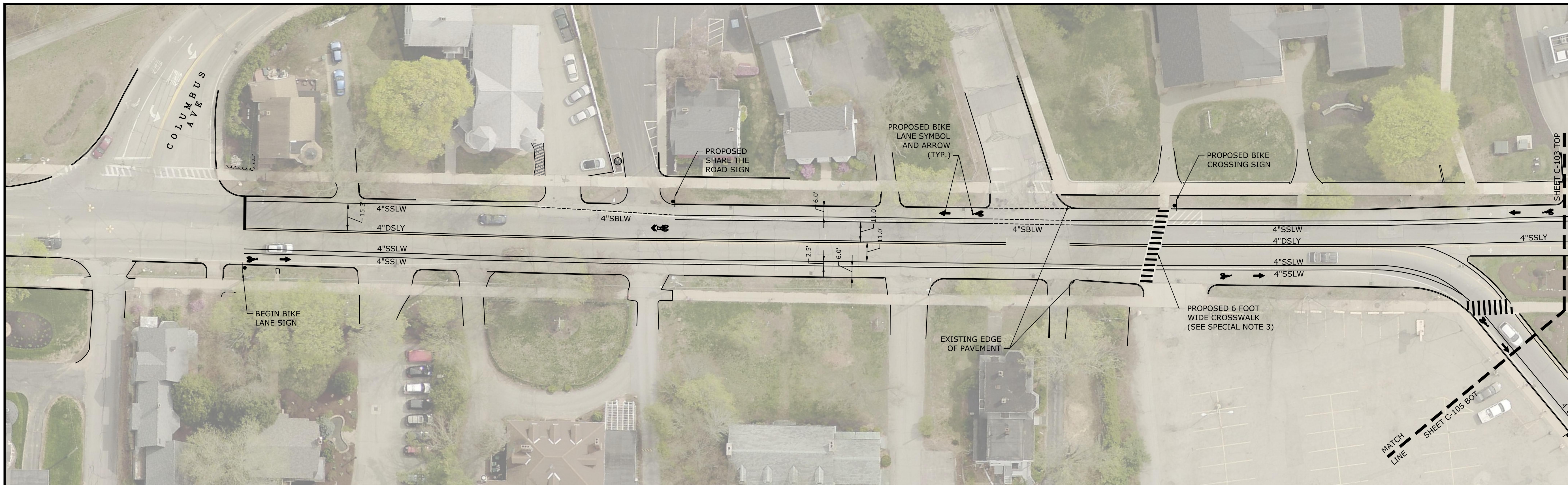
Rochester, New Hampshire

MARK	DATE	DESCRIPTION
PROJECT NO:	R0301-012	
DATE:	03/20/18	
FILE:	R0301-12-C-101_102.dwg	
DRAWN BY:	DPB	
CHECKED:	KAM	
APPROVED:	BLM	

DETAILS SHEET

SCALE: NO SCALE

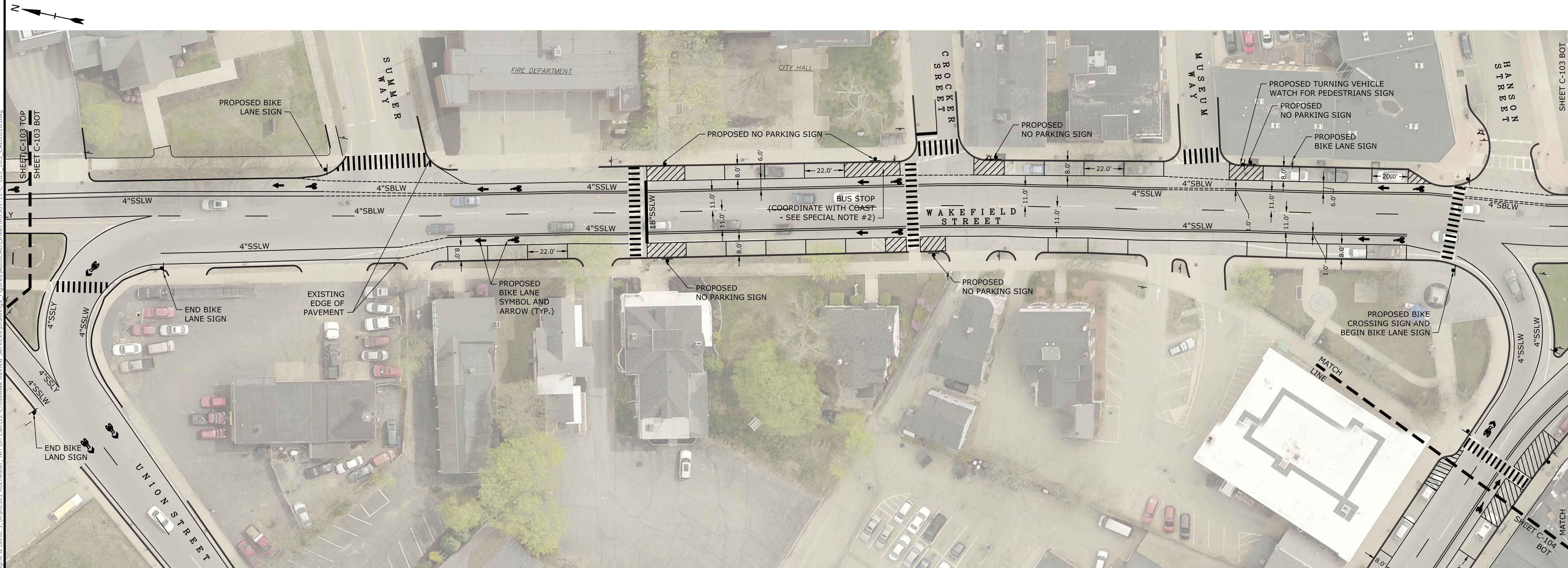
C-102



SPECIAL NOTES:

- CONTRACTOR SHALL COORDINATE WITH THE CITY OF ROCHESTER, NH DEPARTMENT OF PUBLIC WORKS PRIOR TO ALL STRIPING. CONTRACTOR TO MARK OUT STRIPING IN FIELD WITH CHALK AND CONTACT OWNER AND ENGINEER AT LEAST ONE WEEK PRIOR TO STRIPING.
- OWNER TO COORDINATE WITH COAST BUS TO DETERMINE WHETHER CURB BUMP-OUT IS INSTALLED TO REDUCE WEAVING MOVEMENTS BETWEEN BUSES AND BICYCLES.
- AT THE CITY'S REQUEST, SOME EXISTING CROSSWALK LOCATIONS AND CONFIGURATIONS HAVE BEEN MAINTAINED. WE RECOMMEND THE CROSSWALKS BE RECONFIGURED PERPENDICULAR TO THE DIRECTION OF TRAFFIC AND LOCATED OUTSIDE OF THE VEHICULAR DRIVEWAYS AND TO ADA COMPLIANT CURB RAMPS.

**Preliminary
Not For
Construction**



**Infrastructure
Improvements
Downtown
Pavement
Resurfacing
and Marking
Project**

City of
Rochester

Rochester,
New Hampshire

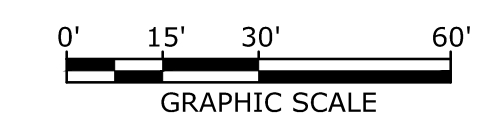
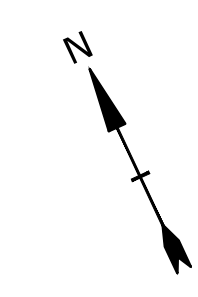
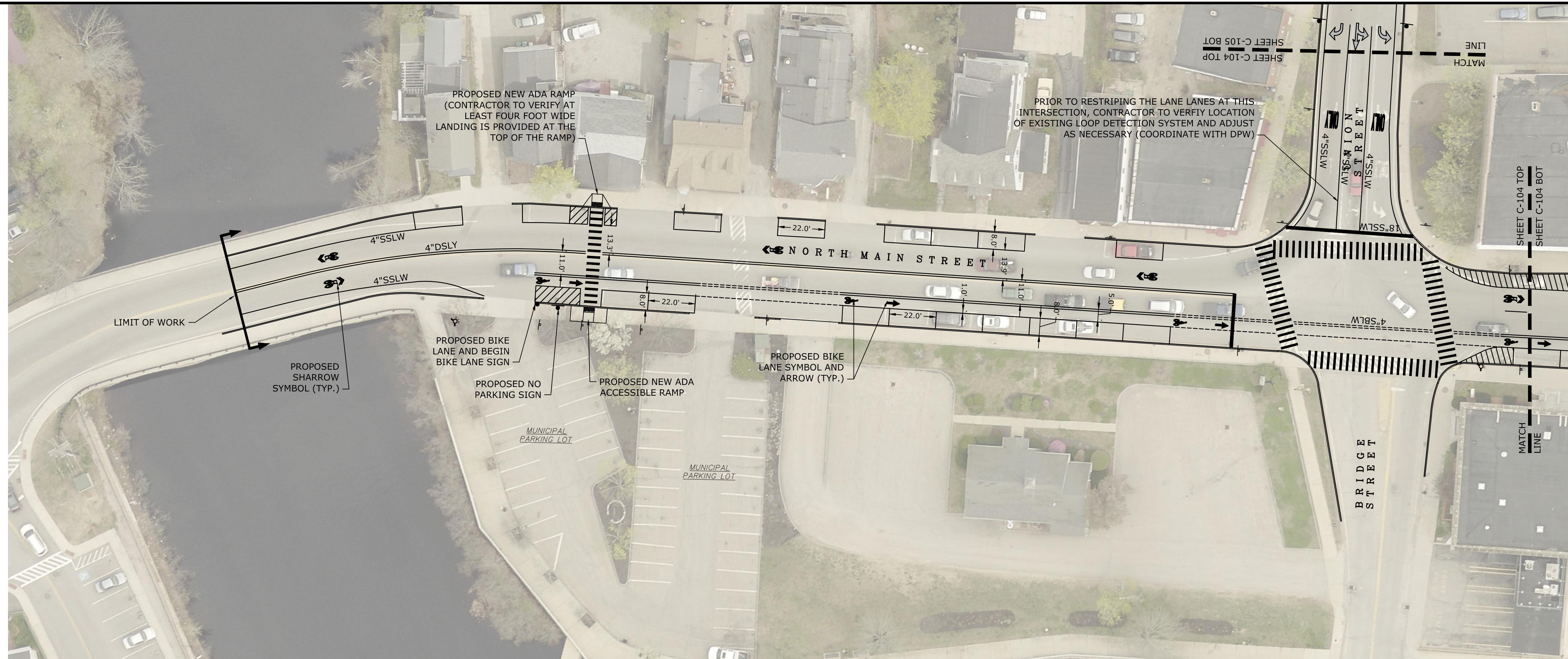
MARK	DATE	DESCRIPTION
PROJECT NO:	R0301-012	
DATE:	03/28/18	
FILE:	R0301-12-C-103_105_CAD2018.dwg	
DRAWN BY:	DPB	
CHECKED:	XX	
APPROVED:	XX	

WAKEFIELD STREET
PAVEMENT
MARKING PLAN

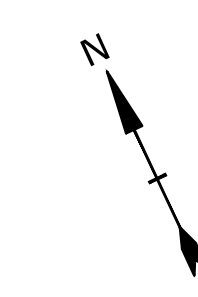
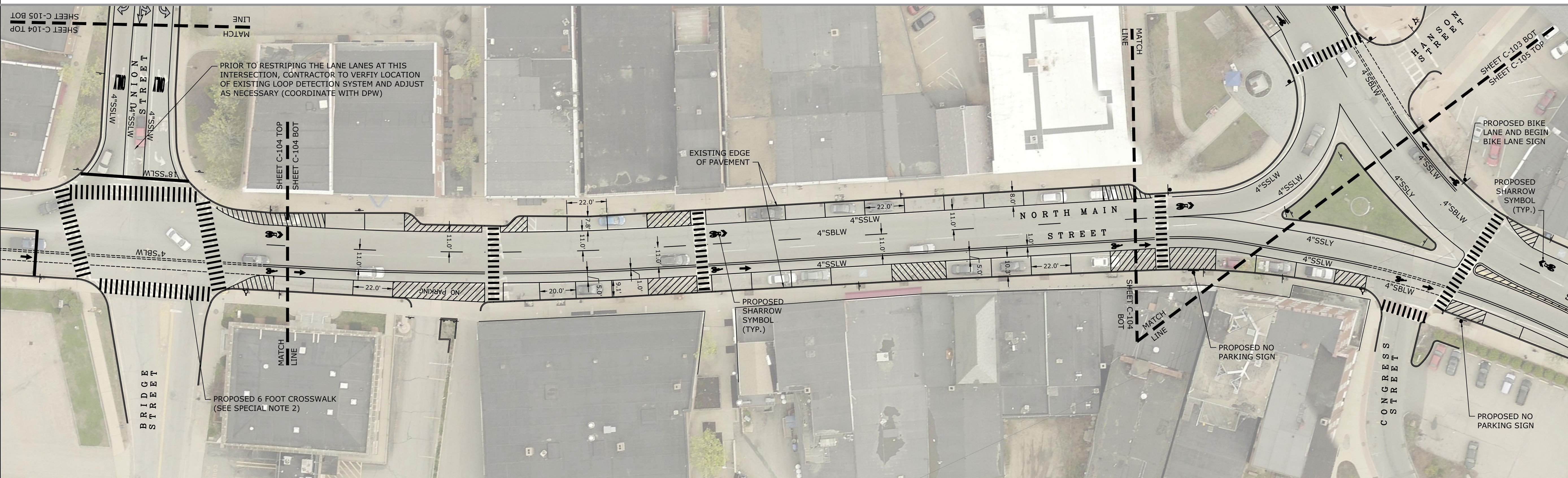
SCALE: 1" = 30'

C-103

Last Saved: 3/28/2018 2:25pm By: KAM
 Plotted On: Mar 29, 2018 - 2:25pm By: KAM
 Tighe & Bond: F:\A\RO301 Rochester, NH On Call\12-Crosswalk Revamp Services\Drawings_Engineer\AurCAD\Sheet\80301-12-C-103_105_CAD2018.dwg



**Preliminary
Not For
Construction**



**Infrastructure
Improvements
Downtown
Pavement
Resurfacing
and Marking
Project**

City of
Rochester

Rochester,
New Hampshire

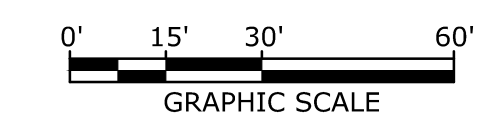
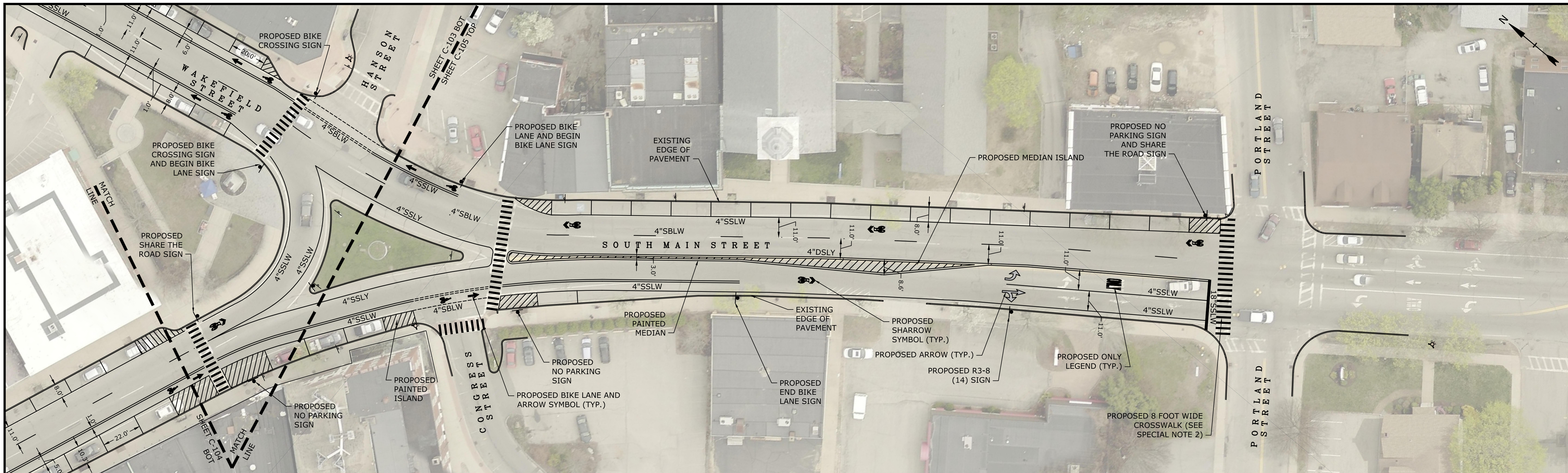
MARK	DATE	DESCRIPTION
PROJECT NO:	R0301-012	
DATE:	03/28/18	
FILE:	R0301-12-C-103_105_CAD2018.dwg	
DRAWN BY:	KAM	
CHECKED:	VK	
APPROVED:	BLM	

**NORTH MAIN STREET
PAVEMENT
MARKING PLAN**

SCALE: 1" = 30'

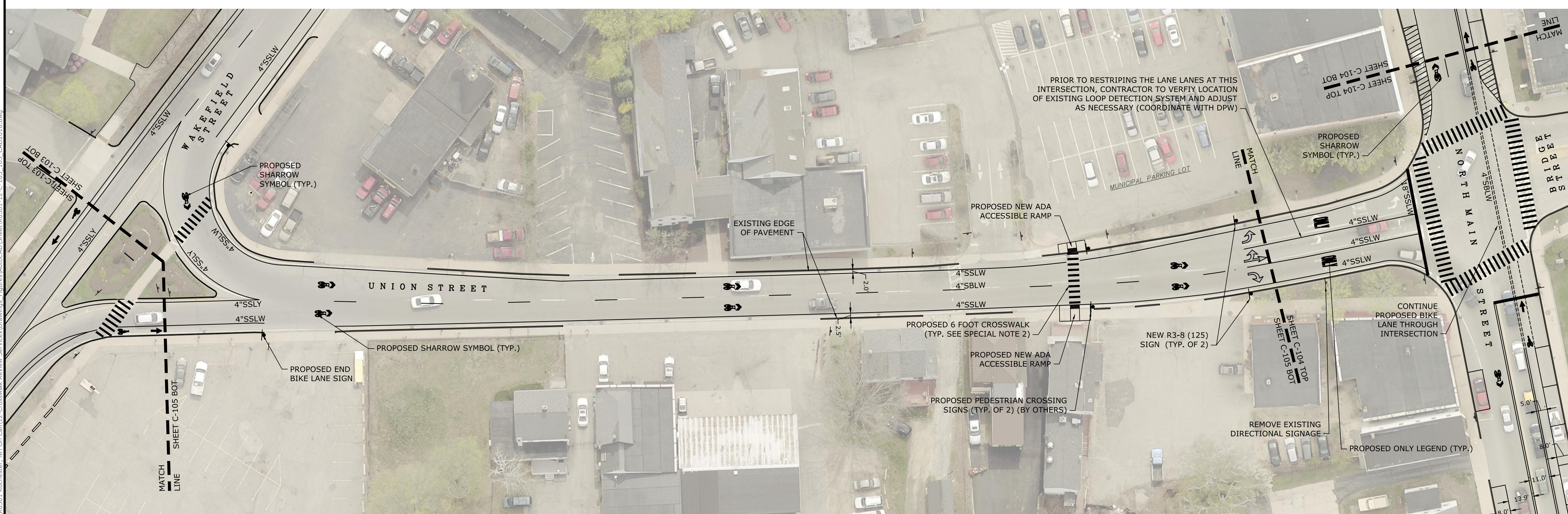
C-104

- SPECIAL NOTES:**
- CONTRACTOR SHALL COORDINATE WITH THE CITY OF ROCHESTER, NH DEPARTMENT OF PUBLIC WORKS PRIOR TO ALL STRIPING. CONTRACTOR TO MARK OUT STRIPING IN FIELD WITH CHALK AND CONTACT OWNER AND ENGINEER AT LEAST ONE WEEK PRIOR TO STRIPING.
 - AT THE CITY'S REQUEST, SOME EXISTING CROSSWALK LOCATIONS AND CONFIGURATIONS HAVE BEEN MAINTAINED. WE RECOMMEND THE CROSSWALKS BE RECONFIGURED PERPENDICULAR TO THE DIRECTION OF TRAFFIC AND LOCATED OUTSIDE OF THE VEHICULAR DRIVEWAYS AND TO ADA COMPLIANT CURB RAMPS.



SPECIAL NOTES:
 1. CONTRACTOR SHALL COORDINATE WITH THE CITY OF ROCHESTER, NH DEPARTMENT OF PUBLIC WORKS PRIOR TO ALL STRIPING.
 2. CONTRACTOR TO MARK OUT STRIPING IN FIELD WITH CHALK AND CONTACT OWNER AND ENGINEER AT LEAST ONE WEEK PRIOR TO STRIPING.
 3. AT THE CITY'S REQUEST, SOME EXISTING CROSSWALK LOCATIONS AND CONFIGURATIONS HAVE BEEN MAINTAINED. WE RECOMMEND THE CROSSWALKS BE RECONFIGURED PERPENDICULAR TO THE DIRECTION OF TRAFFIC AND LOCATED OUTSIDE OF THE VEHICULAR DRIVEWAYS AND TO ADA COMPLIANT CURB RAMPS.

**Preliminary
Not For
Construction**



**Infrastructure
Improvements
Downtown
Pavement
Resurfacing
and Marking
Project**

City of
Rochester

Rochester,
New Hampshire

MARK	DATE	DESCRIPTION
PROJECT NO:	R0301-012	
DATE:	03/28/18	
FILE:	R0301-12-C-103_105_CAD2018.dwg	
DRAWN BY:	KAM	
CHECKED:	VK	
APPROVED:	BLM	

**SOUTH MAIN STREET
& UNION STREET
PAVEMENT
MARKING PLAN**

SCALE: 1" = 30'

Last Saved: 3/28/2018 2:27pm By: KAM
 Plotted On: Mar 29, 2018 2:27pm By: KAM
 Tighe & Bond 214A R0301-12-C-103-105_CAD2018.dwg